

TIGRE



PRODUCT CATALOG

MADE IN
USA 

Grupo **TIGRE**

A better world is under construction



**A BETTER TOMORROW
FOR EVERYONE.
THIS IS OUR LEGACY
FOR THE WORLD.**

Each of our actions or our products has a single goal: to build a better world for everyone. A better world for our professionals who, united and guided by solid values, create innovative solutions to transform people's reality and lives.

A better world for our customers, who receive the technology and the trust that only a market leading brand for decades can offer. And better for the planet, which has every drop of its most precious natural resource respected and preserved with all affection. Today, we are a multinational group admired worldwide, with 23 manufacturing units, present in more than 30 countries. All this done by more than 6500 dedicated and passionate professionals. These numbers fill us with pride. But what really inspires us is knowing that a better world is under construction.

And if it depends on Tigre, it will be better for everyone.



REPRESENTATIVE INFORMATION

Company Name

Office Phone

TIGRE USA

Located in Janesville, Wisconsin.

Tigre, a Brazilian multinational company founded in 1941, leads the Brazilian and South American markets as a worldwide brand leader in the manufacture of PVC pipes and fittings while setting industry-wide benchmarks for quality, durability and performance.

The entrepreneurial spirit, innovation and sustainability are just a few of the values inherited from the parent companies; therefore Tigre-USA operates ethically and responsibly with all its stakeholders: from consumers to installers to industry professionals.

QUALITY

Tigre USA is known around the world for its high quality standards and products that meet or exceed ASTM and CSA standards.

Each product is tested regularly by our quality control team to assure joint tightness, internal stress, impact strength, burst pressure and dimensional accuracy.

PVC resins and gaskets are also tested to meet Tigre and ASTM standards.

Tigre USA products are made in the USA and certified listed by NSF.

*Since 2006
we have been
dedicated to
manufacturing
and marketing
PVC fittings for the
plumbing, water
works and HVAC
industries.*



Contact Name

Cell Phone

Table of contents

6 Drain, Waste and Vent

18 Schedule 40

30 SDR 35 Gasketed

46 SDR 26 Gasketed

62 SDR 35 Solvent Weld

78 CPVC

82 Valves

86 Cements



DRAIN, WASTE & VENT (DWV)

FITTINGS



DWV FITTINGS

Tigre USA sets the standard by offering industry leading and innovative DWV fittings.

Injection molded from 1-1/4" to 6", index marks for easy pre-fabrication. Manufactured to ASTM Standards, NSF Certified.

Tigre USA parts are made in the USA.

DWV Molded Fittings

- DWV molded fitting meet or exceed all performance specifications of ASTM D-2665.
- DWV molded fittings are manufactured using virgin PVC compound with a cell classification of 12454, Type 1, Grade 1 as defined in ASTM D-1784.
- DWV molded fittings conform to the geometries and patterns as defined in ASTM D-3311 and the geometries and patterns as defined in ASTM D-3311 and conform to ASTM F-1498, the standard for tapered pipe threads for thermoplastic fittings.

**DO NOT USE
FITTINGS FOR:
Do not use fittings
for compressed air
or gases.**

**Do not test pvc
piping systems
with compressed
air or gases.**

**Do not use fittings
with liquids not
recommended by
Tigre.**

**Modification of
fittings voids the
after warranty.**

**Specs subject o
change without
notice .**

NSF certified.



COUPLING

PART NO.	SIZE	BOX	PALLET
100-3188	1-1/4	M	100 8000
100-3189	1-1/2	M	100 6300
100-3190	2	M	100 4500
100-3191	3	M	60 1080
100-3192	4	M	25 600
100-3193	6	M	15 180

FEMALE ADAPTER HxFPT

PART NO.	SIZE	BOX	PALLET
101-3198	1-1/2	M	100 6300
101-3199	2	M	100 4500
101-3200	3	M	30 1350
101-3201	4	M	10 630
101-3202	6	M	10 240

PIPE INCREASER REDUCER

PART NO.	SIZE	BOX	PALLET
102-3203	2X1-1/2	M	25 4500
102-3204	3X1-1/2	M	25 1575
102-3205	3X2	M	20 1600

PIPE INCREASER REDUCER

PART NO.	SIZE	BOX	PALLET
102-3206	4 X 2	M	10 630
102-3207	4 X 3	M	10 630
102-1074	6 X 4	M	4 144

TRAP ADAPTER MALE

PART NO.	SIZE	BOX	PALLET
103-3208	1-1/2X1-1/4	M	100 8000
103-3209	1-1/2	M	50 7200

TRAP ADAPTER MALE W/PLASTIC NUT

PART NO.	SIZE	BOX	PALLET
103-P-3211	1-1/2X1-1/4	M	75 6000
103-P-3212	1-1/2	M	50 4000

TRAP ADAPTER MALE W/PLASTIC NUT & WASHER SxSJ

PART NO.	SIZE	BOX	PALLET
103-R-3015	1-1/2	M	50 3600

TRAP ADAPTER FEMALE

PART NO.	SIZE	BOX	PALLET
104-3220	1-1/2X1-1/4	M	50 7200
104-3221	1-1/2	M	50 7200

TRAP ADAPTER FEMALE W/PLASTIC NUT

PART NO.	SIZE	BOX	PALLET
104-P-3223	1-1/2X1-1/4	M	50 4000
104-P-3224	1-1/2	M	50 4000

CLEANOUT ADAPTER SxFPT

PART NO.	SIZE	BOX	PALLET
105-3233	1-1/2	M	50 7200
105-3234	2	M	50 4000
105-3235	3	M	25 1575
105-3236	4	M	10 800
105-3237	6	M	10 180

CLEANOUT ADAPTER W/CO PLUG SxFT



PART NO.	SIZE	BOX	PALLET
105-X-3239	1-1/2	M	50 6400
105-X-3240	2	M	50 4000
105-X-3241	3	M	25 1125
105-X-3242	4	M	10 630
105-X-3243	6	M	10 180

CLEANOUT PLUG MPT



PART NO.	SIZE	BOX	PALLET
106-3251	1-1/2	M	100 14400
106-3252	2	M	50 9000
106-3253	3	M	25 3600
106-3254	4	M	30 2400
106-3255	6	M	10 800

FLUSH BUSHING SxH



PART NO.	SIZE	BOX	PALLET
107-3263	2 X 1-1/2	M	50 7200
107-3264	3 X 1-1/2	M	30 2400

FLUSH BUSHING SxH

PART NO.	SIZE	BOX	PALLET
107-3264	3 X 1-1/2	M	30 2400
107-3265	3 X 2	M	30 2400
107-3266	4 X 2	M	30 1350
107-3267	4 X 3	M	30 1350
107-3268	6 X 4	M	10 320

MALE ADAPTER HxMPT



PART NO.	SIZE	BOX	PALLET
109-3286	1-1/2	M	50 9000
109-3287	1-1/2X1-1/4	M	25 7500
109-3288	2	M	50 7200
109-3289	3	M	25 1125
109-3290	4	M	25 800
109-3296	6	M	7 245

FLUSH CLEAN OUT PLUG



PART NO.	SIZE	BOX	PALLET
110-3292	3	M	50 5250
110-3293	4	M	25 -

CAP



PART NO.	SIZE	BOX	PALLET
116-3301	1-1/2	M	50 9000
116-3302	2	M	50 4000
116-3303	3	M	10 1800
116-3304	4	M	5 900
116-3305	6	M	8 360

ADAPT COUPLING S&D HxH



PART NO.	SIZE	BOX	PALLET
117-3307	4X3	M	20 600
117-3308	4	M	20 700

NO HUB ADAPTER SxH



PART NO.	SIZE	BOX	PALLET
119-3311	1-1/2	M	25 4200
119-3312	2	M	25 3200
119-3314	3	M	20 1600
119-3316	4	M	15 945



HUB ADAPTER CAST IRON HxS



PART NO.	SIZE	BOX	PALLET	
123-3320	2	M	20	1440
123-3321	3	M	25	750
123-3322	4	M	20	480
123R-3326	3X4	M	10	350

SPIGOT PLUG



PART NO.	SIZE	BOX	PALLET	
126-6004	4	M	4	-
126-6006	6	M	6	-

REPAIR COUPLING



PART NO.	SIZE	BOX	PALLET	
130-3337	1-1/2	M	25	4500
130-3338	2	M	25	3200
130-3339	3	M	12	960
130-3340	4	M	5	640
130-3341	6	F	12	144

TEST CAP



PART NO.	SIZE	BOX	PALLET	
131-5285	1-1/2	M	100	44800
131-5287	2	M	100	-
131-5288	3	M	50	8400
131-5289	4	M	50	7200

1/4 BEND



PART NO.	SIZE	BOX	PALLET	
300-3354	1-1/4	M	100	4500
300-3355	1-1/2	M	100	3200
300-3356	2	M	50	1600
300-3357	3	M	25	450
300-3358	4	M	10	240
300-3359	6	M	5	60

1/4 BEND W/ SIDE INLET



PART NO.	SIZE	BOX	PALLET	
300-S-3362	3	M	10	360

1/4 BEND STREET



PART NO.	SIZE	BOX	PALLET	
302-3370	1-1/2	M	100	3200
302-3371	2	M	50	1600
302-3372	3	M	20	480
302-3373	4	M	10	240
302-3374	6	M	5	60

1/4 BEND STREET W/2" LOW HEEL INLET



PART NO.	SIZE	BOX	PALLET	
303-3376	3	M	25	450
303-3377	4	M	6	180

LONG SWEEP 1/4 BEND



PART NO.	SIZE	BOX	PALLET	
304-3378	1-1/2	M	50	2250
304-3379	2	M	25	1125
304-3380	3	M	10	320
304-3381	4	M	5	160
304-3382	6	M	5	35

LONG SWEEP 1/4 BEND STREET



PART NO.	SIZE	BOX	PALLET
309-3386	1-1/2	M	50 2250
309-3387	2	M	25 1125
309-3388	3	M	20 360
309-3389	4	M	5 160

1/6 BEND



PART NO.	SIZE	BOX	PALLET
319-3392	1-1/2	M	40 3200
319-3393	2	M	25 1575
319-3394	3	M	20 640
319-3395	4	M	10 320

1/6 BEND STREET



PART NO.	SIZE	BOX	PALLET
320-3396	1-1/2	M	40 3200
320-3397	2	M	25 1575
320-3398	3	M	20 640
320-3399	4	M	10 320

1/8 BEND



PART NO.	SIZE	BOX	PALLET
321-3401	1-1/2	M	100 3200
321-3402	2	M	50 1600
321-3403	3	M	20 640
321-3404	4	M	10 320
321-3405	6	M	3 72

1/8 BEND STREET



PART NO.	SIZE	BOX	PALLET
323-3408	1-1/2	M	100 3200
323-3409	2	M	50 2250
323-3410	3	M	20 640
323-3411	4	M	10 320
323-3412	6	M	3 96

1/16 BEND



PART NO.	SIZE	BOX	PALLET
324-3416	1-1/2	M	50 4000

1/16 BEND

PART NO.	SIZE	BOX	PALLET
324-3417	2	M	25 2000
324-3418	3	M	20 900
324-3419	4	M	15 480
324-3420	6	M	3 96

1/16 BEND STREET



PART NO.	SIZE	BOX	PALLET
326-3421	1-1/2	M	50 4000
326-3422	2	M	25 2000
326-3423	3	M	20 900
326-3424	4	M	10 320
326-3425	6	M	5 120

DOUBLE 1/4 BEND



PART NO.	SIZE	BOX	PALLET
327-3426	1-1/2	M	20 1440
327-3427	2	M	25 875
327-3428	2 X 1-1/2 X 1-1/2	M	25 1200
327-3429	3	M	15 270
327-3040	4	M	6 108



1/32 BEND



PART NO.	SIZE	BOX	PALLET
328-3711	6	M	1 -

CLOSET BEND REDUCING HxH



PART NO.	SIZE	BOX	PALLET
329-3430	3X4	M	10 240

CLOSET BEND REDUCING HxS



PART NO.	SIZE	BOX	PALLET
330-3431	3X4	M	10 240

VENT ELL



PART NO.	SIZE	BOX	PALLET
331-3434	1-1/2	M	20 2880
331-3435	2	M	30 1890
331-3436	3	M	25 450
331-3437	4	M	10 -

VENT ELL STREET



PART NO.	SIZE	BOX	PALLET
333-3441	1-1/2	M	50 2250
333-3442	2	M	20 1600
333-3443	3	M	5 400
333-3444	4	M	15 360

SANITARY TEE



PART NO.	SIZE	BOX	PALLET
400-3462	1-1/4	M	25 2000

SANITARY TEE

PART NO.	SIZE	BOX	PALLET
400-3463	1-1/2	M	100 1800
400-3464	2	M	35 1120
400-3465	3	M	30 360
400-3466	4	M	5 160
400-3467	6	M	4 48

SANITARY TEE REDUCING HxHxH



PART NO.	SIZE	BOX	PALLET
401-3469	2 X 1-1/2 X 1-1/2	M	25 1125
401-3470	2X1-1/2X2	M	25 1125
401-3471	2X2X1-1/2	M	50 1200
401-3472	3X3X1-1/2	M	20 640
401-3473	3X3X2	M	10 450
401-3475	4X4X2	M	10 320
401-3476	4X4X3	M	10 180
401-3477	6X6X4	M	4 72

SANITARY TEE STREET SxHxH



PART NO.	SIZE	BOX	PALLET
403-3479	1-1/2	M	20 1600
403-3480	2	M	25 800
403-3481	3	M	30 360
403-3482	4	M	10 180

**SANITARY TEE STREET
REDUCING SxHxH**



PART NO.	SIZE	BOX	PALLET
404-3484	2X2X1-1/2	M	50 1200
404-3485	3X3X1-1/2	M	10 450
404-3486	3X3X2	M	10 350
404-3487	4X4X2	M	5 225
404-3488	4X4X3	M	5 150

**SANITARY TEE W/ L
SIDE INLET ALL HUB**



PART NO.	SIZE	BOX	PALLET
416-3500	3X3X3X1.5	M	10 180
416-3501	3X3X3X2	M	10 180
416-3502	4X4X4X2	M	5 120

**SANITARY TEE W/ R
SIDE INLET ALL HUB**



PART NO.	SIZE	BOX	PALLET
417-3503	3X3X3X1.5	M	10 180
417-3504	3X3X3X2	M	10 180

**SANITARY TEE W/ R
SIDE INLET ALL HUB**

PART NO.	SIZE	BOX	PALLET
417-3505	4X4X4X2	M	5 80

**SANITARY TEE W/ R&L
SIDE INLETS ALL HUB**



PART NO.	SIZE	BOX	PALLET
418-3507	3x3x3x2x2	M	5 150
418-3508	4x4x4x2x2	M	5 90

DOUBLE SANITARY TEE ALL HUB



PART NO.	SIZE	BOX	PALLET
428-3510	2	M	20 640
428-3511	3	M	25 240
428-3512	4	M	4 108

**DOUBLE SANITARY TEE
REDUCING ALL HUB**



PART NO.	SIZE	BOX	PALLET
429-3513	2 X 2 X 1-1/2 X 1-1/2	M	25 800
429-3514	3 X 3 X 1-1/2X1-1/2	M	20 360
429-3516	3X3X2X2	M	10 450
429-3518	4X4X2X2	M	7 224
429-3519	4X4X3X3	M	8 144

**DOUBLE SANITARY TEE
W/2" R&L SIDE INLET**



PART NO.	SIZE	BOX	PALLET
439-3527	3x3x3x3x2x2	M	10 128
439-3528	4x4x4x4x2x2	M	5 72



VENT TEE



PART NO.	SIZE	BOX	PALLET
441-3531	2	M	25 900
441-3533	4	M	5 175
441-3534	6	M	4 32

CLEAN OUT TEE HxHxFIPT



PART NO.	SIZE	BOX	PALLET
444-3534	1-1/2	M	20 2560
444-3535	2	M	20 1260
444-3536	3	M	10 450
444-3537	4	M	10 240

CLEAN OUT TEE W/CO PLUG



PART NO.	SIZE	BOX	PALLET
444-X-3539	1-1/2	M	10 1800
444-X-3540	2	M	10 1280
444-X-3541	3	M	10 450
444-X-3542	4	M	5 225
444-X-0216	6	M	2 70

CLEANOUT TEE W/FLUSH PLUG



PART NO.	SIZE	BOX	PALLET
445-X-3548	3	M	10 300
445-X-3549	4	M	10 180

TWO WAY CLEANOUT TEE HxHxH



PART NO.	SIZE	BOX	PALLET
448-3557	3	M	12 216
448-3558	4	M	5 120
448-3559	6	M	3 -

DOUBLE FIXTURE FITTING HxHxHxH



PART NO.	SIZE	BOX	PALLET
500-4001	3	M	10 -

500-4002	2X2X1-1/2X1-1/2	M	10 -
500-4155	2	M	25 360

COMBO WYE & 1/8 BEND 1PC



PART NO.	SIZE	BOX	PALLET
501-3561	1-1/2	M	50 1200
501-3562	2	M	20 640
501-3563	3	M	10 180
501-3564	4	M	8 96
502-3567	2X2X1-1/2	M	20 900
502-3568	3X3X1-1/2	M	15 450
502-3569	3X3X2	M	10 320
502-3570	4X4X2	M	5 225
502-3571	4X4X3	M	6 144

COMBO WYE & 1/8 BEND 2PC



PART NO.	SIZE	BOX	PALLET
503-3572	3	M	10 240
503-3573	4	M	5 90
503-3574	6	M	2 24
504-3565	2 X 1-1/2 X 1-1/2	M	5 400
504-3580	4X4X3	M	5 120
504-3582	6X6X4	M	4 48

DOUBLE COMBO WYE & 1/8 BEND



PART NO.	SIZE	BOX	PALLET
507-3590	1-1/2	M	10 450
507-3591	2	M	10 300
507-3592	2X1-1/2	M	30 450
507-3593	3	M	10 80
507-3594	4	M	5 35

WYE ALL HUB



PART NO.	SIZE	BOX	PALLET
600-3607	1-1/2	M	50 1600
600-3608	2	M	25 800
600-3609	3	M	25 300
600-3610	4	M	5 120
600-3611	6	M	4 48

WYE REDUCING ALL HUB



PART NO.	SIZE	BOX	PALLET
601-3615	2 X 1-1/2 X 1-1/2	M	25 800

WYE REDUCING ALL HUB

PART NO.	SIZE	BOX	PALLET
601-3616	2X1-1/2X2	M	10 480
601-3617	2X2X1-1/2	M	25 800
601-3618	3X3X1-1/2	M	15 270
601-3619	3X3X2	M	25 300
601-3620	4X4X1-1/2	M	10 180
601-3621	4X4X2	M	10 180
601-3622	4X4X3	M	10 180
601-3623	6X6X3	M	5 60
601-3624	6X6X4	M	5 60

WYE STREET SxHxH



PART NO.	SIZE	BOX	PALLET
602-3629	1-1/2	M	50 1600
602-3630	2	M	30 720
602-3631	3	M	10 320
602-3632	4	M	10 120

WYE STREET REDUCING SxHxH



PART NO.	SIZE	BOX	PALLET
603-3633	3X3X1-1/2	M	20 480
603-3635	4X4X2	M	10 240
603-3636	4X4X3	M	10 80

DOUBLE WYE ALL HUB



PART NO.	SIZE	BOX	PALLET
611-3637	1-1/2	M	25 1280
611-3638	2	M	20 600
611-3639	3	M	15 120
611-3640	4	M	5 70
611-3641	6	M	2 16
612-3643	2 X 2 X 1-1/2 X 1-1/2	M	25 630
612-3644	3 X 3 X 1-1/2 X 1-1/2	M	10 300
612-3645	3X3X2X2	M	15 210
612-3646	4X4X2X2	M	5 150
612-3647	4X4X3X3	M	5 90
612-0615	6X6X4X4	M	5 35

RETURN BEND HxH



PART NO.	SIZE	BOX	PALLET
700-3653	1-1/2	M	20 1600
700-3654	2	M	35 840
700-3655	3	M	10 240
700-3656	4	M	5 120



PTRAP HxH



PART NO.	SIZE	BOX	PALLET
706-X-3668	1-1/2	M	25 1125
706-X-3669	2	M	20 640
706-X-3670	3	M	10 180
706-X-3671	4	M	4 96

PTRAP W/CLEAN OUT HxH



PART NO.	SIZE	BOX	PALLET
707-X-3676	1-1/2	M	10 720

PTRAP HxH W/PLASTIC NUT



PART NO.	SIZE	BOX	PALLET
708-P-3681	1-1/2	M	25 875
708-P-3682	2	M	25 450

LA PATTERN PTRAP W/PLASTIC NUT SxH



PART NO.	SIZE	BOX	PALLET
711-P-3694	1-1/2	M	25 750

CLOSET FLANGE HUB



PART NO.	SIZE	BOX	PALLET
800-3703	4X3	M	25 600
800-3704	4	M	25 -

CLOSET FLANGE W/KNOCKOUT H



PART NO.	SIZE	BOX	PALLET
800-KO-3705	4X3	M	25 -

CLOSET FLANGE METAL W/ KNOCKOUT H



PART NO.	SIZE	BOX	PALLET
800-KO-3706	4	M	25 -

CLOSET FLANGE REDUCING SPIGOT



PART NO.	SIZE	BOX	PALLET
801-3707	4X3	M	25 800

CLOSET FLANGE W/ADJUSTABLE METAL RING H



PART NO.	SIZE	BOX	PALLET
811-3710	4X3	M	25 -
811-3711	4	M	25 -

CLOSET FLANGE W/ADJUSTABLE METAL RING SPG



PART NO.	SIZE	BOX	PALLET
812-3714	4X3	M	25 600
812-3715	4	M	6 -

OFFSET CLOSET FLANGE W/ ADJUSTABLE METAL RING H



PART NO.	SIZE	BOX	PALLET
820-3720	4X3	M	20 -

FLUSH CLOSET FLANGE



PART NO.	SIZE	BOX	PALLET
815-3718	4X3	M	25 750

FLUSH CLOSET FLANGE



PART NO.	SIZE	BOX	PALLET
888-P-0003	3	M	20 -

FLUSH CLOSET FLANGE W/ KNOCKOUT



PART NO.	SIZE	BOX	PALLET
815-3719	4X3	M	25 750



SCHEDULE 40

PRESSURE
FITTINGS



SCHEDULE 40 FITTINGS

Tigre USA sets the standard by offering industry leading and innovative Schedule 40 fittings.

Injection molded from 1-1/4" to 8". Approved for potable water: manufactured to ASTM Standards and NSF Certified.

Schedule 40 Pressure fittings are certified to meet or exceed all performance specifications of ASTM D-2466.

Schedule 40 Pressure fittings are manufactured using a virgin PVC compound with a cell classification of 12454, Type 1, Grade 1 as defined in ASTM D-1784.

Schedule 40 Pressure fittings conform to the geometrics and patterns as defined in ASTM D-3311 and conform to ASTM F-1498, the standard for tapered pipe thread for thermoplastic fittings.

Schedule 40 Pressure fittings are manufactured from materials certified by NSF Standard 14 and 61 for use in potable water service.

Tigre USA parts are made in the USA.

**SCHEDULE
40 PRESSURE
INFORMATION:**
*Do not use fittings
for compressed air
or gases.*

*Do not test PVC
piping systems
with compressed
air or gases.*

*Do not use fittings
with liquids not
recommended by
Tigre.*

*Modification of
fittings voids the
warranty.*

*NSF certified for
potable water
services.*



TEE SxSxS



PART NO.	SIZE	BOX	PALLET
401-003	3/8	M	250
401-005	1/2	M	150
401-007	3/4	M	50
401-010	1	M	50
401-012	1-1/4	M	40
401-015	1-1/2	M	25
401-020	2	M	15
401-025	2-1/2	M	8
401-030	3	M	5
401-040	4	M	3
401-050	5	M	1
401-060	6	M	1
401-080	8	M	2

REDUCING TEE SxSxS



PART NO.	SIZE	BOX	PALLET
401-053	3/8X3/8X1/2	M	250
401-074	1/2X1/2X3/4	M	100
401-094	3/4X1/2X1/2	M	100
401-095	3/4X1/2X3/4	M	100
401-101	3/4X1/2	M	100
401-102	3/4X3/4X1	M	50
401-122	1X1/2X1	M	50
401-124	1X3/4X1/2	M	50

REDUCING TEE SxSxS

PART NO.	SIZE	BOX	PALLET
401-125	1X3/4X3/4	M	50
401-126	1X3/4X1	M	50
401-130	1X1/2	M	50
401-131	1X3/4	M	50
401-132	1X1X1-1/4	M	50
401-133	1X1X1-1/2	M	40
401-156	1-1/4X1X1/2	M	50
401-157	1-1/4X1X3/4	M	50
401-158	1-1/4X1X1	M	50
401-166	"1-1/4 X 1-1/4 X 1/2"	M	50
401-167	"1-1/4 X 1-1/4 X 3/4"	M	50
401-168	"1-1/4 X 1-1/4 X 1"	M	50
401-169	"1-1/4 X 1-1/4 X 1-1/2"	M	25
401-199	"1-1/2 X 1-1/4 X 1/2"	M	25
401-201	"1-1/2 X 1-1/4 X 3/4"	M	25
401-202	"1-1/2 X 1-1/4 X 1"	M	25
401-209	"1-1/2 X 1-1/2 X 1/2"	M	25
401-210	1-1/2 X 1-1/2X3/4	M	25
401-211	1-1/2X1-1/2X1	M	25
401-212	1-1/2X1-1/2X1-1/4	M	25
401-213	1-1/2X1-1/2X2	M	20
401-238	2X1-1/2X3/4	M	25
401-239	2X1-1/2X1	M	25
401-247	2X2X1/2	M	20
401-248	2X2X3/4	M	20
401-249	2X2X1	M	15
401-250	2X2X1-1/4	M	15
401-251	2X2X1-1/2	M	10
401-287	2-1/2X2-1/2X1/2	M	10
401-288	2-1/2X2-1/2X3/4	M	10
401-289	2-1/2X2-1/2X1	M	10

REDUCING TEE SxSxS

PART NO.	SIZE	BOX	PALLET
401-290	"2-1/2 X 2-1/2 X 1-1/4"	M	10
401-291	"2-1/2 X 2-1/2 X 1-1/2"	M	10
401-292	2-1/2X2-1/2X2	M	10
401-333	3X3X1/2	M	5
401-334	3X3X3/4	M	5
401-335	3X3X1	M	5
401-336	3X3X1-1/4	M	5
401-337	3X3X1-1/2	M	5
401-338	3X3X2	M	5
401-415	4X4X1/2	M	5
401-416	4X4X3/4	M	5
401-417	4X4X1/2	M	4
401-420	4X4X2	M	3
401-422	4X4X3	M	3
401-486	5X5X2	M	2
401-488	5X5X3	M	2
401-490	5X5X4	M	2
401-528	6X6X2	M	2
401-530	6X6X3	M	2
401-532	6X6X4	M	2
401-578	8X8X2	M	2
401-580	8X8X3	M	2
401-582	8X8X4	M	2
401-585	8X8X6	M	2

TEE SxSxFIPT



PART NO.	SIZE	BOX	PALLET
402-005	1/2	M	150
402-007	3/4	M	100
402-010	1	M	50
402-012	1-1/4	M	25
402-015	1-1/2	M	25

TEE SxSxFIPT

PART NO.	SIZE	BOX	PALLET
402-020	2	M	15
402-025	2-1/2	M	8
402-030	3	M	5
402-040	4	M	3

REDUCING TEE SxSxFIPT



PART NO.	SIZE	BOX	PALLET
402-053	3/8X3/8X1/2	M	250
402-071	1/2X1/2X1/8	M	250
402-072	1/2X1/2X1/4	M	150
402-074	1/2X1/2X3/4	M	150
402-094	3/4X1/2X1/2	M	150
402-095	3/4X1/2X3/4	M	150
402-101	3/4X3/4X1/2	M	100
402-102	3/4X3/4X1	M	50
402-122	1X1/2X1	M	50
402-124	1X3/4X1/2	M	100
402-125	1X3/4X3/4	M	100
402-126	1X3/4X1	M	50
402-130	1X1X1/2	M	50
402-131	1X1X3/4	M	50
402-132	1X1X1-1/4	M	50
402-156	1-1/4X1X1/2	M	50
402-157	1-1/4X1X3/4	M	50
402-158	1-1/4X1X1	M	50
402-166	"1-1/4 X 1-1/4 X 1/2"	M	50
402-167	"1-1/4 X 1-1/4 X 3/4"	M	50
402-168	1-1/4X1-1/4X1	M	25
402-169	"1-1/4 X 1-1/4 X 1-1/2"	M	25
402-199	"1-1/2 X 1-1/4 X 1/2"	M	50

REDUCING TEE SxSxFIPT

PART NO.	SIZE	BOX	PALLET
402-201	"1-1/2 X 1-1/4 X 3/4"	M	25
402-202	1-1/2X1-1/4X1	M	25
402-209	"1-1/2 X 1-1/2 X 1/2"	M	50
402-210	"1-1/2 X 1-1/2 X 3/4"	M	50
402-211	1-1/2X1-1/2X1	M	25
402-212	"1-1/2 X 1-1/2 X 1-1/4"	M	25
402-213	1-1/2X1-1/2X2	M	25
402-238	2X1-1/2X3/4	M	25
402-239	2X2X1	M	25
402-247	2X2X1/2	M	20
402-248	2X2X3/4	M	20
402-249	2X2X1	M	15
402-250	2X2X1-1/4	M	15
402-251	2X2X1-1/2	M	10
402-287	"2-1/2 X 2-1/2 X 1/2"	M	10
402-288	"2-1/2 X 2-1/2 X 3/4"	M	10
402-289	2-1/2X2-1/2X1	M	10
402-290	"2-1/2 X 2-1/2 X 1-1/4"	M	10
402-291	"2-1/2 X 2-1/2 X 1-1/2"	M	10
402-292	2-1/2X2-1/2X2	M	10
402-333	3X3X1/2	M	5
402-334	3X3X3/4	M	5
402-335	3X3X1	M	5
402-337	3X3X1-1/2	M	5
402-338	3X3X2	M	5
402-415	4X4X1/2	M	5
402-416	4X4X3/4	M	5
402-417	4X4X1	M	4
402-420	4X4X2	M	3
402-422	4X4X3	M	3
402-486	5X5X2	M	2
402-488	5X5X3	M	2
402-490	5X5X4	M	2
402-528	6X6X2	M	2
402-530	6X6X3	M	2

REDUCING TEE SxSxFIPT

PART NO.	SIZE	BOX	PALLET
402-532	6X6X4	M	2
402-578	8X8X2	M	2
402-580	8X8X3	M	2
402-582	8X8X4	M	2

TEE FIPTxFIPTxFIPT



PART NO.	SIZE	BOX	PALLET
405-005	1/2	M	100
405-007	3/4	M	100
405-010	1	M	50
405-012	1-1/4	M	25
405-015	1-1/2	M	25
405-020	2	M	15

90 ELL SLIPxSLIP



PART NO.	SIZE	BOX	PALLET
406-003	3/8	M	250
406-005	1/2	M	250
406-007	3/4	M	50
406-010	1	M	50
406-012	1-1/4	M	50
406-015	1-1/2	M	50



90 ELL SLIPxSLIP

PART NO.	SIZE	BOX	PALLET
406-020	2	M	20
406-025	2-1/2	M	10
406-030	3	M	8
406-040	4	M	3
406-050	5	M	2
406-060	6	M	1
406-080	8	M	2

90 REDUCING ELL SLIPxSLIP



PART NO.	SIZE	BOX	PALLET
406-101	3/4X1/2	M	200
406-130	1X1/2	M	100
406-131	1X3/4	M	50
406-168	1-1/4X1	M	50
406-251	2X1-1/2	M	25

90 ELL SLIPxFIPT



PART NO.	SIZE	BOX	PALLET
407-005	1/2	M	250
407-007	3/4	M	150
407-010	1	M	50
407-012	1-1/4	M	50
407-015	1-1/2	M	25

90 ELL SLIPxFIPT

PART NO.	SIZE	BOX	PALLET
407-020	2	M	25
407-025	2-1/2	M	10
407-030	3	M	10
407-040	4	M	5

90 REDUCING ELL SLIPxFIPT



PART NO.	SIZE	BOX	PALLET
407-101	3/4X1/2	M	200
407-130	1X1/2	M	100
407-131	1X3/4	M	50
407-168	1-1/4X1	M	50
407-211	1-1/2X1	M	25

90 ELL FIPTxFIPT



PART NO.	SIZE	BOX	PALLET
408-005	1/2	M	250
408-007	3/4	M	100
408-010	1	M	50
408-012	1-1/4	M	50
408-015	1-1/2	M	25
408-020	2	M	25

90 STREET ELL SPGxSLIP



PART NO.	SIZE	BOX	PALLET
409-005	1/2	M	250
409-007	3/4	M	150
409-010	1	M	50
409-012	1-1/4	M	50
409-015	1-1/2	M	50
409-020	2	M	20

90 REDUCING STREET ELL SPGxSLIP



PART NO.	SIZE	BOX	PALLET
409-074	1/2X3/4	M	250
409-101	3/4X1/2	M	250
409-102	3/4X1	M	50
409-130	1X1/2	M	100
409-131	1X3/4	M	50

90 STREET ELL MIPTxSLIP



PART NO.	SIZE	BOX	PALLET
410-005	1/2	M 250	-
410-007	3/4	M 150	-
410-010	1	M 50	-
410-012	1-1/4	M 50	-
410-015	1-1/2	M 25	-
410-020	2	M 20	-

90 REDUCING STREET ELL MIPTxSLIP



PART NO.	SIZE	BOX	PALLET
410-074	1/2X3/4	M 250	-
410-101	3/4X1/2	M 250	-
410-102	3/4X1	M 100	-
410-130	1X1/2	M 100	-
410-131	1X3/4	M 50	-

90 STREET ELL SPGxFIPT



PART NO.	SIZE	BOX	PALLET
411-005	1/2	M 250	-
411-007	3/4	M 200	-
411-010	1	M 50	-
411-012	1-1/4	M 50	-
411-015	1-1/2	M 50	-
411-020	2	M 20	-

90 STREET ELL MIPTxFIPT



PART NO.	SIZE	BOX	PALLET
412-005	1/2	M 250	-
412-007	3/4	M 200	-
412-010	1	M 100	-
412-012	1-1/4	M 50	-
412-015	1-1/2	M 25	-
412-020	2	M 20	-

SIDE OUTLET 90 ELL SxSxS



PART NO.	SIZE	BOX	PALLET
413-005	1/2	M 100	-
413-101	3/4 X 3/4 X 1/2	M 100	-
413-130	1 X 1 X 1/2	M 50	-

SIDE OUTLET 90 SxSxFIPT



PART NO.	SIZE	BOX	PALLET
414-005	1/2	M 100	-
414-007	3/4	M 100	-
414-101	3/4 X 3/4 X 1/2	M 100	-
414-130	1X1X1/2	M 50	-
414-131	1X1X3/4	M 50	-



45 ELL SLIPxSLIP



PART NO.	SIZE	BOX	PALLET
417-005	1/2	M	250
417-007	3/4	M	100
417-010	1	M	100
417-012	1-1/4	M	50
417-015	1-1/2	M	50
417-020	2	M	20
417-025	2-1/2	M	10
417-030	3	M	8
417-040	4	M	3
417-050	5	M	2
417-060	6	M	2
417-080	8	M	2

CROSS SLIP



PART NO.	SIZE	BOX	PALLET
420-005	1/2	M	100
420-007	3/4	M	50
420-010	1	M	25
420-012	1-1/4	M	25
420-015	1-1/2	M	15
420-020	2	M	10

45 ELL SPGxSLIP



PART NO.	SIZE	BOX	PALLET
427-010	1	M	50
427-012	1-1/4	M	50
427-015	1-1/2	M	50
427-020	2	M	20

COUPLING SLIPxSLIP



PART NO.	SIZE	BOX	PALLET
429-005	1/2	M	50
429-006	1/2	M	250
429-007	3/4	M	100
429-010	1	M	100
429-012	1-1/4	M	50
429-015	1-1/2	M	50
429-020	2	M	25
429-025	2-1/2	M	25
429-030	3	M	10
429-040	4	M	6
429-050	5	M	5
429-060	6	M	4
429-080	8	M	5

REDUCER COUPLING SLIPxSLIP



PART NO.	SIZE	BOX	PALLET
429-101	3/4x1/2	M	100
429-130	1x1/2	M	40
429-131	1x3/4	M	40
429-167	1-1/4x3/4	M	20
429-168	1-1/4x1	M	20
429-211	1-1/2x1	M	20
429-212	1-1/2x1-1/4	M	30
429-250	2x1-1/4	M	30
429-251	2x1-1/2	M	30

THREADED COUPLING FxF



PART NO.	SIZE	BOX	PALLET
430-005	1/2	M	250

REDUCER THREADED COUPLING FxF



PART NO.	SIZE	BOX	PALLET
430-101	3/4x1/2	M	250

REDUCER THREADED COUPLING Fx F

PART NO.	SIZE	BOX	PALLET
430-131	1X3/4	M	100 -
430-168	1-1/4X1	M	50 -
430-212	1-1/2X1-1/4	M	50 -
430-251	2X1-1/2	M	50 -

P.I.P. PLASTIC IRR PIPE IPSxPIP



PART NO.	SIZE	BOX	PALLET
431-040	4	M	10 -
431-060	6	M	4 -

MALE FITTING ADAPTER SPGxMIPT



PART NO.	SIZE	BOX	PALLET
433-002	1/4	M	250 -
433-003	3/8	M	250 -
433-005	1/2	M	250 -
433-007	3/4	M	250 -
433-010	1	M	100 -
433-012	1-1/4	M	50 -
433-015	1-1/2	M	50 -
433-020	2	M	25 -

FEMALE ADAPTER SLIPxFIPT



PART NO.	SIZE	BOX	PALLET
435-002	1/4	M	250 -
435-005	1/2	M	250 25600
435-007	3/4	M	100 14400
435-010	1	M	100 9000
435-012	1-1/4	M	50 6000
435-015	1-1/2	M	50 4500
435-020	2	M	25 2400
435-025	2-1/2	M	15 -
435-030	3	M	10 -
435-040	4	M	5 -

REDUCING FEMALE ADAPTER SLIPxFIPT



PART NO.	SIZE	BOX	PALLET
435-053	3/8X1/2	M	250 -
435-072	1/2X1/4	M	250 -
435-073	1/2X3/8	M	250 -
435-074	1/2X3/4	M	250 -
435-101	3/4X1/2	M	250 -
435-102	3/4X1	M	100 -
435-130	1X1/2	M	100 -
435-131	1X3/4	M	100 -
435-132	1X1-1/4	M	50 -
435-168	1-1/4X1	M	50 -
435-169	1-1/4X1-1/2	M	50 -

REDUCING FEMALE ADAPTER SLIPxFIPT

PART NO.	SIZE	BOX	PALLET
435-212	1-1/2X1-1/4	M	50 -
435-213	1-1/2X2	M	25 -

MALE ADAPTER MIPTxSLIP



PART NO.	SIZE	BOX	PALLET
436-003	3/8	M	250 -
436-005	1/2	M	250 25600
436-007	3/4	M	150 21600
436-010	1	M	100 -
436-012	1-1/4	M	50 8750
436-015	1-1/2	M	50 6000
436-020	2	M	25 3600
436-025	2-1/2	M	25 -
436-030	3	M	16 -
436-040	4	M	12 -
436-060	6	M	3 -
436-080	8	M	4 -

REDUCING MALE ADAPTER MIPTxSLIP



PART NO.	SIZE	BOX	PALLET
436-043	1/4X3/8	M	250 -
436-045	1/4X1/2	M	250 -
436-052	3/8X1/4	M	250 -



REDUCING MALE ADAPTER MIPTxSLIP

PART NO.	SIZE	BOX	PALLET
436-053	3/8X1/2	M 250	-
436-072-2	1/2X1/4	M 250	-
436-073	1/2X3/8	M 250	-
436-074	1/2X3/4	M 250	-
436-075	1/2X1	M 100	-
436-098-2	3/4X1/4	M 250	-
436-099-2	3/4X3/8	M 250	-
436-101	3/4X1/2	M 250	-
436-102	3/4X1	M 100	-
436-103	3/4X1-1/4	M 100	-
436-131	1X3/4	M 200	-
436-132	1x1-1/4	M 50	-
436-168	1-1/4X1	M 100	-
436-169	1-1/4X1-1/2	M 125	-
436-210-2	1-1/2X3/4	M 125	-
436-211-2	1-1/2X1	M 125	-
436-212	1-1/2X1-1/4	M 50	-
436-213	1-1/2X2	M 50	-
436-247-2	2X1/2	M 50	-
436-249-2	2X1	M 50	-
436-251-2	2X1-1/2	M 50	-
436-287-2	2-1/2X1/2	M 25	-
436-288-2	2-1/2X3/4	M 25	-
436-289-2	2-1/2X1	M 25	-
436-290-2	2-1/2X1-1/4	M 25	-
436-291-2	2-1/2X1-1/2	M 25	-
436-292-2	2-1/2X2	M 25	-
436-339-2	3X2-1/2	M 25	-
436-341	3X4	M 6	-
436-422-2	4X3	M 10	-

REDUCER BUSHING SPGxSLIP



PART NO.	SIZE	BOX	PALLET
437-072	1/2X1/4	M 500	-

REDUCER BUSHING SPGxSLIP

PART NO.	SIZE	BOX	PALLET
437-073	1/2X3/8	M 500	-
437-101	3/4X1/2	M 250	25600
437-130	1X1/2	M 250	17500
437-131	1X3/4	M 250	17500
437-166	1-1/4X1/2	M 150	11200
437-167	1-1/4X3/4	M 150	11200
437-168	1-1/4X1	M 150	11200
437-209	1-1/2X1/2	M 100	-
437-210	1-1/2X3/4	M 100	7500
437-211	1-1/2X1	M 100	7500
437-212	1-1/2X1-1/4	M 100	7500
437-247	2X1/2	M 50	-
437-248	2X3/4	M 50	5120
437-249	2X1	M 50	5120
437-250	2X1-1/4	M 50	5120
437-251	2X1-1/2	M 50	5120
437-287	2-1/2X1/2	M 25	-
437-288	2-1/2X3/4	M 25	-
437-289	2-1/2X1	M 25	-
437-290	2-1/2X1-1/4	M 25	-
437-291	2-1/2X1-1/2	M 25	-
437-292	2-1/2X2	M 25	-
437-333	3X1/2	M 25	-
437-334	3X3/4	M 25	-
437-335	3X1	M 25	-
437-336	3X1-1/4	M 25	-
437-337	3X1-1/2	M 25	-
437-338	3X2	M 25	-
437-339	3X2-1/2	M 25	1800
437-420	4X2	M 10	-
437-421	4X2-1/2	M 10	-
437-422	4X3	M 10	-
437-486	5X2	M 5	-
437-487	5X2-1/2	M 5	-
437-488	5X3	M 5	-
437-490	5X4	M 5	-
437-528	6X2	M 2	-
437-529	6X2-1/2	M 4	-
437-530	6X3	M 4	-
437-532	6X4	M 4	-
437-534	6X5	M 4	-
437-578	8X2	M 2	-
437-579	8X2-1/2	M 2	-

REDUCER BUSHING SPGxSLIP

PART NO.	SIZE	BOX	PALLET
437-580	8X3	M 2	-
437-582	8X4	M 2	-
437-583	8X5	M 2	-
437-585	8X6	M 2	-

REDUCER BUSHING SPGxFIPT



PART NO.	SIZE	BOX	PALLET
438-071	1/2X1/8	M 250	-
438-072	1/2X1/4	M 250	-
438-073	1/2X3/8	M 250	-
438-098	3/4X1/4	M 250	-
438-099	3/4X3/8	M 250	-
438-101	3/4X1/2	M 500	-
438-128	1X1/4	M 250	-
438-129	1X3/8	M 250	-
438-130	1X1/2	M 250	-
438-131	1X3/4	M 250	-
438-166	1-1/4X1/2	M 150	-
438-167	1-1/4X3/4	M 150	-
438-168	1-1/4X1	M 25	-
438-209	1-1/2X1/2	M 100	-
438-210	1-1/2X3/4	M 100	-
438-211	1-1/2X1	M 100	-
438-212	1-1/2X1-1/4	M 100	-
438-247	2X1/2	M 50	-
438-248	2X3/4	M 50	-
438-249	2X1	M 50	-
438-250	2X1-1/4	M 50	-
438-251	2X1-1/2	M 50	5120
438-287	2-1/2X1/2	M 25	-
438-288	2-1/2X3/4	M 25	-
438-289	2-1/2X1	M 25	-
438-290	2-1/2X1-1/4	M 25	-
438-291	2-1/2X1-1/2	M 25	-

REDUCER BUSHING SPGxFIPT

PART NO.	SIZE	BOX	PALLET
438-292	2-1/2X2	M 25	-
438-333	3X1/2	M 25	-
438-334	3X3/4	M 25	-
438-335	3X1	M 25	-
438-336	3X1-1/4	M 25	-
438-337	3X1-1/2	M 25	-
438-338	3X2	M 25	-
438-339	3X2-1/2	M 25	-
438-415	4X1/2	M 10	-
438-416	4X3/4	M 10	-
438-417	4X1	M 10	-
438-418	4X1-1/4	M 10	-
438-419	4X1-1/2	M 10	-
438-420	4X2	M 10	-
438-421	4X2-1/2	M 10	-
438-422	4X3	M 10	-

REDUCER BUSHING MIPTxFIPT



PART NO.	SIZE	BOX	PALLET
439-041	1/4X1/8	M 500	-
439-050	3/8X1/8	M 500	-
439-052	3/8X1/4	M 250	-
439-071	1/2X1/8	M 250	-
439-072	1/2X1/4	M 500	-
439-073	1/2X3/8	M 500	-
439-098	3/4X1/4	M 500	-
439-099	3/4X3/8	M 250	-
439-101	3/4X1/2	M 500	-
439-128	1X1/4	M 250	-
439-129	1X3/8	M 250	-
439-130	1X1/2	M 250	-
439-131	1X3/4	M 250	-
439-166	1-1/4X1/2	M 150	-
439-167	1-1/4X3/4	M 150	-

REDUCER BUSHING MIPTxFIPT

PART NO.	SIZE	BOX	PALLET
439-168	1-1/4X1	M 150	-
439-209	1-1/2X1/2	M 100	-
439-210	1-1/2X3/4	M 100	-
439-211	1-1/2X1	M 100	-
439-212	1-1/2X1-1/4	M 100	-
439-251	2X1-1/2	M 50	-

CAP SLIP



PART NO.	SIZE	BOX	PALLET
447-005	1/2	M 250	25600
447-007	3/4	M 50	22400
447-010	1	M 250	-
447-012	1-1/4	M 125	8700
447-015	1-1/2	M 50	6000
447-020	2	M 50	4480
447-025	2-1/2	M 25	-
447-030	3	M 15	-
447-040	4	M 9	-
447-050	5	M 5	-
447-060	6	M 3	-
447-080	8	M 2	-

CAP FIPT



PART NO.	SIZE	BOX	PALLET
448-005	1/2	M 250	25600
448-007	3/4	M 250	25600

CAP FIPT

PART NO.	SIZE	BOX	PALLET
448-010	1	M 250	15000
448-012	1-1/4	M 125	-
448-015	1-1/2	M 50	-
448-020	2	M 50	-
448-025	2-1/2	M 25	-
448-030	3	M 15	-
448-040	4	M 9	-

SPIGOT PLUG



PART NO.	SIZE	BOX	PALLET
449-005	1/2	M 250	-
449-007	3/4	M 250	-
449-010	1	M 250	-
449-012	1-1/4	M 125	-
449-015	1-1/2	M 50	-
449-020	2	M 50	-
449-025	2-1/2	M 25	-
449-030	3	M 25	-
449-040	4	M 10	-

PLUG MIPT



PART NO.	SIZE	BOX	PALLET
450-002	1/4	M 500	-



PLUG MIPT

PART NO.	SIZE	BOX	PALLET
450-003	3/8	M	500
450-005	1/2	M	250
450-007	3/4	M	500
450-010	1	M	250
450-012	1-1/4	M	125
450-015	1-1/2	M	125
450-020	2	M	50
450-025	2-1/2	M	25
450-030	3	M	25
450-040	4	M	10

UNION SLIPxSLIP



PART NO.	SIZE	BOX	PALLET
457-005	1/2	M	50
457-007	3/4	M	50
457-010	1	M	18
457-012	1-1/4	M	10
457-015	1-1/2	M	10
457-020	2	M	16
457-025	2-1/2	M	3
457-030	3	M	3
457-040	4	M	2

UNION FIPTxFIPT



PART NO.	SIZE	BOX	PALLET
458-005	1/2	M	50

UNION FIPTxFIPT

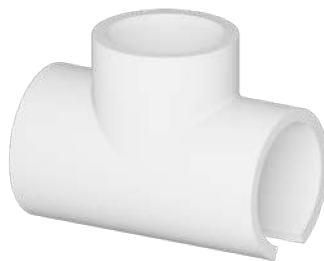
PART NO.	SIZE	BOX	PALLET
458-007	3/4	M	50
458-010	1	M	18
458-012	1-1/4	M	10
458-015	1-1/2	M	10
458-020	2	M	16
458-025	2-1/2	M	3
458-030	3	M	3
458-040	4	M	2

UNION SLIPxFIPT



PART NO.	SIZE	BOX	PALLET
459-005	1/2	M	50
459-007	3/4	M	50
459-010	1	M	18
459-012	1-1/4	M	10
459-015	1-1/2	M	10
459-020	2	M	16
459-025	2-1/2	M	3
459-030	3	M	3

SNAP TEE SNAPxSLIP



PART NO.	SIZE	BOX	PALLET
463-005	1/2	M	250

SNAP TEE SNAPxSLIP

PART NO.	SIZE	BOX	PALLET
463-007	3/4	M	100
463-010	1	M	45
463-012	1-1/4	M	25
463-015	1-1/2	M	25
463-020	2	M	20
463-025	2-1/2	M	5
463-030	3	M	5
463-040	4	M	3
463-101	3/4X1/2	M	125
463-130	1X1/2	M	70

SNAP TEE SNAPxFIPT



PART NO.	SIZE	BOX	PALLET
464-005	1/2	M	250
464-007	3/4	M	200
464-010	1	M	45
464-071	1/2X1/8	M	125
464-072	1/2X1/4	M	125
464-101	3/4X1/2	M	125
464-130	1X1/2	M	70

SNAP TEE SNAPxMIPT



PART NO.	SIZE	BOX	PALLET
465-010	1	M	45
465-131	1X1X3/4	M	50

**INSERT FITTING ADAPTER
INSxSLIP**



PART NO.	SIZE	BOX	PALLET
474-015	1-1/2	M	50 -
474-020	2	M	25 -

MANIFOLD TEE SLIPxSPGxMIPT



PART NO.	SIZE	BOX	PALLET
475-007	3/4	M	50 -
475-010	1	M	50 -
475-131	1X1X3/4	M	50 -

WYE SLIPxSLIPxSLIP



PART NO.	SIZE	BOX	PALLET
477-020	2	M	8 -

WYE SLIPxSLIPxSLIP

PART NO.	SIZE	BOX	PALLET
477-040	4	M	2 -
477-060	6	M	1 -

**FEMALE FITTING
ADAPTER SPGxFIPT**



PART NO.	SIZE	BOX	PALLET
478-005	1/2	M	250 -
478-007	3/4	M	250 -
478-010	1	M	100 -
478-012	1-1/4	M	50 -
478-015	1-1/2	M	50 -
478-020	2	M	25 -
478-025	2-1/2	M	15 -
478-030	3	M	10 -
478-040	4	M	6 -
478-212	1-1/2 X 1-1/4	M	50 -

EXTRA DEEP COUPLING SxS



PART NO.	SIZE	BOX	PALLET
479-015	1-1/2	M	25 -
479-020	2	M	15 -
479-025	2-1/2	M	10 -
479-030	3	M	8 -

EXTRA DEEP COUPLING SxS

PART NO.	SIZE	BOX	PALLET
479-040	4	M	6 -

SHORT COUPLING SLIPxSLIP



PART NO.	SIZE	BOX	PALLET
S429-012	1-1/4	M	50 -
S429-015	1-1/2	M	50 -

RUNNING TRAP



PART NO.	SIZE	BOX	PALLET
488-007	3/4	M	50 3000

P TRAP



PART NO.	SIZE	BOX	PALLET
489-007	3/4	M	50 3000



SDR 35

GASKETED FITTINGS



SDR 35 GASKETED FITTINGS

Tigre USA sets the standard by offering industry leading SDR 35 Gasketed Fittings Injection molded from 4" to 12" and fabricated fittings are sourced from 15" to 36".

SDR 35 fittings are constructed to best work underground, at a depth no greater than 9'.

Features a dual lipped gasket. Where solvent welding fuses the pipe and fitting together into one, gasketed fittings use a mechanical joint to join the pipe and fitting. Manufactured to ASTM Standards, NSF Certified. Tigre USA parts are made in the USA.

Gasketed Fittings:

- Manufactured in accordance with ASTM D-3034, ASTM F-1336 and CSA B182.2.
- Injection molded from virgin PVC compound having a cell classification of 12454 or 13343 in accordance with, and certified by the NSF to meet ASTM D-1784.
- Gaskets manufactured in accordance with ASTM F-477 or ASTM F-913.
- Gasket joints comply with ASTM D-3212 Internal Pressure Test (ex-filtration) and Vacuum Test (infiltration) with gasketed joint misalignment and 5% top load deflection.
- Gaskets shall be firmly seated in fitting in order to ensure proper installation and to prevent dislocation or misalignment during system assembly.
- Third party tested, certified and listed by NSF to meet specifications defined in ASTM D3034, ASTM F1336 and CSA B182.2, where applicable.

INFORMATION FOR USE.

Do not use fittings for compressed air or gases.

Do not test PVC piping systems with compressed air or gases.

Do not use fittings with liquids not recommended by Tigre.

Modification of fittings voids the warranty.

Specs subject to change without notice.

NSF certified.



TEE GxGxG



PART NO.	SIZE	BOX	PALLET	
35-1528	4	M	10	180
35-1529	6X4	M	1	100
35-1530	6	M	1	75
35-1531	8X4	M	1	60
35-1711	8X5	M	1	48
35-1532	8X6	M	1	48
35-367	8	M	1	38
35-368	10 X 4	M	2	12
35-370	10X5	M	1	33
35-369	10X6	M	1	31
35-600	10X8	F	1	17
35-371	10	M	1	14
35-372	12 X 4	M	1	8
35-373	12X6	M	1	16
35-601	12X8	F	1	22
35-602	12X10	F	1	11
35-376	12	M	1	6
35-603	15X4	F	1	11
35-604	15X6	F	1	10
35-605	15X8	F	1	9
35-606	15X10	F	1	8
35-607	15X12	F	1	7
35-608	15	F	1	6
35-609	18X4	F	1	6
35-610	18X6	F	1	6
35-611	18X8	F	1	5
35-612	18X10	F	1	5
35-613	18X12	F	1	4
35-614	18X15	F	1	4
35-615	18	F	1	3
35-616	21X4	F	1	4
35-617	21X6	F	1	4

TEE GxGxG

PART NO.	SIZE	BOX	PALLET	
35-618	21X8	F	1	3
35-619	21X10	F	1	3
35-620	21X12	F	1	3
35-621	21X15	F	1	3
35-622	21X18	F	1	2
35-623	21	F	1	2
35-624	24X4	F	1	3
35-625	24X6	F	1	3
35-626	24X8	F	1	2
35-627	24X10	F	1	2
35-628	24X12	F	1	2
35-629	24X15	F	1	2
35-630	24X18	F	1	2
35-631	24X21	F	1	2
35-632	24	F	1	1
35-633	27X4	F	1	2
35-634	27X6	F	1	2
35-635	27X8	F	1	2
35-636	27X10	F	1	2
35-637	27X12	F	1	2
35-638	27X15	F	1	1
35-639	27X18	F	1	1
35-640	27X21	F	1	1
35-641	27X24	F	1	1
35-642	27	F	1	1
35-643	30X4	F	1	1
35-644	30X6	F	1	1
35-645	30X8	F	1	1
35-646	30X10	F	1	1
35-647	30X12	F	1	1
35-648	30X15	F	1	1
35-649	30X18	F	1	1
35-650	30X21	F	1	1
35-651	30X24	F	1	1
35-652	30X27	F	1	1
35-653	30	F	1	-
35-654	36X4	F	1	1
35-655	36X6	F	1	1
35-656	36X8	F	1	1
35-657	36X10	F	1	1
35-658	36X12	F	1	1
35-659	36X15	F	1	1
35-660	36X18	F	1	-

TEE GxGxG

PART NO.	SIZE	BOX	PALLET	
35-661	36X21	F	1	-
35-662	36X24	F	1	-
35-663	36X27	F	1	-
35-665	36X30	F	1	-
35-666	36	F	1	-

2-WAY CLEAN OUT TEE



PART NO.	SIZE	BOX	PALLET	
35-1664	4	M	6	-
35-1666	6	M	3	21

TEE SxGxG



PART NO.	SIZE	BOX	PALLET	
35-667	4	F	10	180
35-668	6X4	F	1	75
35-669	6	F	1	57
35-670	8X4	F	1	54
35-671	8X6	F	1	46
35-672	8	F	1	25
35-673	10X4	F	1	26

TEE SxGxG

PART NO.	SIZE		BOX	PALLET
35-674	10X6	F	1	23
35-675	10X8	F	1	18
35-676	10	F	1	16
35-677	12X4	F	1	19
35-678	12X6	F	1	10
35-679	12X8	F	1	13
35-680	12X10	F	1	12
35-681	12	F	1	10
35-682	15X4	F	1	12
35-683	15X6	F	1	10
35-684	15X8	F	1	9
35-685	15X10	F	1	8
35-686	15X12	F	1	7
35-687	15	F	1	6
35-688	18X4	F	1	6
35-689	18X6	F	1	6
35-690	18X8	F	1	5
35-691	18X10	F	1	5
35-692	18X12	F	1	4
35-693	18X15	F	1	4
35-694	18	F	1	3
35-695	21X4	F	1	4
35-696	21X6	F	1	4
35-697	21X8	F	1	4
35-698	21X10	F	1	3
35-699	21X12	F	1	3
35-700	21X15	F	1	3
35-701	21X18	F	1	2
35-702	21	F	1	2
35-703	24X4	F	1	3
35-704	24X6	F	1	3
35-705	24X8	F	1	3
35-706	24X10	F	1	2
35-707	24X12	F	1	2
35-708	24X15	F	1	2
35-709	24X18	F	1	2
35-710	24X21	F	1	2
35-711	24	F	1	1
35-712	27X4	F	1	2
35-713	27X6	F	1	2
35-714	27X8	F	1	2
35-715	27X10	F	1	2
35-716	27X12	F	1	2

TEE SxGxG

PART NO.	SIZE		BOX	PALLET
35-717	27X15	F	1	1
35-718	27X18	F	1	1
35-719	27X21	F	1	1
35-720	27X24	F	1	1
35-721	27	F	1	1
35-722	30X4	F	1	1
35-723	30X6	F	1	1
35-724	30X8	F	1	1
35-725	30X10	F	1	1
35-726	30X12	F	1	1
35-727	30X15	F	1	1
35-728	30X18	F	1	1
35-729	30X21	F	1	1
35-730	30X24	F	1	1
35-731	30X27	F	1	1
35-732	30	F	1	-
35-733	36X4	F	1	1
35-734	36X6	F	1	1
35-735	36X8	F	1	1
35-736	36X10	F	1	1
35-737	36X12	F	1	1
35-738	36X15	F	1	1
35-739	36X18	F	1	-
35-740	36X21	F	1	-
35-741	36X24	F	1	-
35-742	36X27	F	1	-
35-743	36X30	F	1	-
35-744	36	F	1	-

2-WAY CLEAN OUT TEE GxGxDWV G



PART NO.	SIZE		BOX	PALLET
35-1665	4	M	1	-

TEE WYE GxGxG



PART NO.	SIZE		BOX	PALLET
35-1800	4	M	10	180
35-1801	6X4	M	1	110
35-1802	6	M	1	48
35-1803	8X4	M	1	41
35-1804	8X6	M	1	40
35-1805	8	M	1	24
35-1806	10X4	F	1	21
35-1813	10X6	M	1	22
35-1808	10X8	F	1	14
35-1814	10	F	1	11
35-1809	12X4	F	1	15
35-1284	12X6	F	1	14
35-1816	12X8	F	1	11
35-1817	12X10	F	1	9
35-1818	12	F	1	7
35-1819	15X4	F	1	10
35-1820	15X6	F	1	9
35-1821	15X8	F	1	7
35-1822	15X10	F	1	5
35-1823	15X12	F	1	4
35-1824	15	F	1	3
35-1825	18X4	F	1	6
35-1826	18X6	F	1	5
35-1827	18X8	F	1	4
35-1828	18X10	F	1	3
35-1829	18X12	F	1	3
35-1830	18X15	F	1	2
35-1831	18	F	1	2
35-1832	21X4	F	1	4
35-1833	21X6	F	1	4
35-1834	21X8	F	1	3
35-1835	21X10	F	1	2
35-1836	21X12	F	1	2
35-1837	21X15	F	1	2
35-1838	21X18	F	1	1



TEE WYE GxGxG

PART NO.	SIZE		BOX	PALLET
35-1839	21	F	1	1
35-1840	24X4	F	1	3
35-1841	24X6	F	1	2
35-1842	24X8	F	1	2
35-1843	24X10	F	1	2
35-1844	24X12	F	1	1
35-1845	24X15	F	1	1
35-1846	24X18	F	1	1
35-1847	24X21	F	1	1
35-1848	24	F	1	1
35-1849	27X4	F	1	2
35-1850	27X6	F	1	2
35-1851	27X8	F	1	2
35-1852	27X10	F	1	1
35-1853	27X12	F	1	1
35-1854	27X15	F	1	1
35-1855	27X18	F	1	1
35-1856	27X21	F	1	1
35-1857	27X24	F	1	1
35-1858	27	F	1	-
35-1859	30X4	F	1	1
35-1860	30X6	F	1	1
35-1861	30X8	F	1	1
35-1862	30X10	F	1	1
35-1863	30X12	F	1	1
35-1864	30X15	F	1	1
35-1865	30X18	F	1	1
35-1866	30X21	F	1	-
35-1867	30X24	F	1	-
35-1868	30X27	F	1	-
35-1869	30	F	1	-
35-1870	36X4	F	1	1
35-1871	36X6	F	1	1
35-1872	36X8	F	1	1
35-1873	36X10	F	1	1
35-1874	36X12	F	1	-
35-1875	36X15	F	1	-
35-1876	36X18	F	1	-
35-1877	36X21	F	1	-
35-1878	36X24	F	1	-
35-1879	36X27	F	1	-
35-1880	36X30	F	1	-
35-1881	36	F	1	-

TEE WYE SxGxG



PART NO.	SIZE		BOX	PALLET
35-1807	4	M	10	180
35-100	6	M	1	48
35-1810	8X4	M	1	48
35-1811	8X6	M	1	40
35-1883	10X4	F	1	22
35-1884	10X6	F	1	19
35-1885	10X8	F	1	14
35-1886	10	F	1	11
35-1887	12X4	F	1	16
35-1888	12X6	F	1	14
35-1889	12X8	F	1	11
35-1890	12X10	F	1	9
35-1891	12	F	1	7
35-1892	15X4	F	1	10
35-1893	15X6	F	1	9
35-1894	15X8	F	1	7
35-1895	15X10	F	1	5
35-1896	15X12	F	1	4
35-1897	15	F	1	3
35-1898	18X4	F	1	6
35-1899	18X6	F	1	5
35-1900	18X8	F	1	4
35-1901	18X10	F	1	3
35-1902	18X12	F	1	3
35-1903	18X15	F	1	2
35-1904	18	F	1	2
35-1905	21X4	F	1	4
35-1906	21X6	F	1	4
35-1907	21X8	F	1	3
35-1908	21X10	F	1	2
35-1909	21X12	F	1	2
35-1910	21X15	F	1	2
35-1911	21X18	F	1	1

TEE WYE SxGxG

PART NO.	SIZE		BOX	PALLET
35-1912	21	F	1	1
35-1913	24X4	F	1	3
35-1914	24X6	F	1	3
35-1915	24X8	F	1	2
35-1916	24X10	F	1	2
35-1917	24X12	F	1	1
35-1918	24X15	F	1	1
35-1919	24X18	F	1	1
35-1920	24X21	F	1	1
35-1921	24	F	1	1
35-1922	27X4	F	1	2
35-1923	27X6	F	1	2
35-1924	27X8	F	1	2
35-1925	27X10	F	1	1
35-1926	27X12	F	1	1
35-1927	27X15	F	1	1
35-1928	27X18	F	1	1
35-1929	27X21	F	1	1
35-1930	27X24	F	1	1
35-1931	27	F	1	-
35-1932	30X4	F	1	1
35-1933	30X6	F	1	1
35-1934	30X8	F	1	1
35-1935	30X10	F	1	1
35-1936	30X12	F	1	1
35-1937	30X15	F	1	1
35-1938	30X18	F	1	1
35-1939	30X21	F	1	-
35-1940	30X24	F	1	-
35-1941	30X27	F	1	-
35-1942	30	F	1	-
35-1943	36X4	F	1	1
35-1944	36X6	F	1	1
35-1945	36X8	F	1	1
35-1946	36X10	F	1	1
35-1947	36X12	F	1	-
35-1948	36X15	F	1	-
35-1949	36X18	F	1	-
35-1950	36X21	F	1	-
35-1951	36X24	F	1	-
35-1952	36X27	F	1	-
35-1953	36X30	F	1	-
35-1954	36	F	1	-

**WYE W/DWV BRANCH
GxGxDWVG**



PART NO.	SIZE	BOX	PALLET
35-1755	8x4	M	2 14

DOUBLE TEE WYE GxGxGxG



PART NO.	SIZE	BOX	PALLET
35-1955	6X4	F	1 -
35-1956	6	F	1 -
35-1957	8X4	F	1 -
35-1958	8X6	F	1 -
35-1959	8	F	1 10
35-1960	10X4	F	1 17
35-1961	10X6	F	1 12
35-1962	10X8	F	1 8
35-1963	10	F	1 6
35-1964	12X4	F	1 12
35-1965	12X6	F	1 9
35-1966	12X8	F	1 6
35-1967	12X10	F	1 5
35-1968	12	F	1 4
35-1969	15X4	F	1 8
35-1970	15X6	F	1 6
35-1971	15X8	F	1 4

DOUBLE TEE WYE GxGxGxG

PART NO.	SIZE	BOX	PALLET
35-1972	15X10	F	1 4
35-1973	15X12	F	1 3
35-1974	15	F	1 2
35-1975	18X4	F	1 4
35-1976	18X6	F	1 4
35-1977	18X8	F	1 3
35-1978	18X10	F	1 3
35-1979	18X12	F	1 2
35-1980	18X15	F	1 2
35-1981	18	F	1 1
35-1982	21X4	F	1 3
35-1983	21X6	F	1 2
35-1984	21X8	F	1 2
35-1985	21X10	F	1 2
35-1986	21X12	F	1 2
35-1987	21X15	F	1 1
35-1988	21X18	F	1 1
35-1989	21	F	1 1
35-1990	24X4	F	1 2
35-1991	24X6	F	1 2
35-1992	24X8	F	1 2
35-1993	24X10	F	1 1
35-1994	24X12	F	1 1
35-1995	24X15	F	1 1
35-1996	24X18	F	1 1
35-1997	24X21	F	1 1
35-1998	24	F	1 -
35-1999	27X4	F	1 2
35-2000	27X6	F	1 1
35-2001	27X8	F	1 1
35-2002	27X10	F	1 1
35-2003	27X12	F	1 1
35-2004	27X15	F	1 1
35-2005	27X18	F	1 1
35-2006	27X21	F	1 1
35-2007	27X24	F	1 -
35-2008	27	F	1 -
35-2009	30X4	F	1 1
35-2010	30X6	F	1 1
35-2011	30X8	F	1 1
35-2012	30X10	F	1 1
35-2013	30X12	F	1 1
35-2014	30X15	F	1 1

DOUBLE TEE WYE GxGxGxG

PART NO.	SIZE	BOX	PALLET
35-2015	30X18	F	1 -
35-2016	30X21	F	1 -
35-2017	30X24	F	1 -
35-2018	30X27	F	1 -
35-2019	30	F	1 -
35-2020	36X4	F	1 1
35-2021	36X6	F	1 1
35-2022	36X8	F	1 1
35-2023	36X10	F	1 -
35-2024	36X12	F	1 -
35-2025	36X15	F	1 -
35-2026	36X18	F	1 -
35-2027	36X21	F	1 -
35-2028	36X24	F	1 -
35-2029	36X27	F	1 -
35-2030	36X30	F	1 -
35-2031	36	F	1 -

WYE GxGxG



PART NO.	SIZE	BOX	PALLET
35-1500	4	M	10 120
35-1501	6X4	M	1 75
35-1502	6	M	1 50
35-1503	8X4	M	1 45
35-1504	8X6	M	1 34
35-451	8	M	1 24
35-452	10X4	M	1 33
35-453	10X6	M	1 22
35-377	10X8	F	1 14
35-455	10	M	1 10
35-456	12X4	M	1 16
35-457	12X6	M	1 16



WYE GxGxG

PART NO.	SIZE		BOX	PALLET
35-378	12X8	F	1	11
35-379	12X10	F	1	9
35-460	12	M	1	6
35-380	15X4	F	1	10
35-381	15X6	F	1	9
35-4556	15X8	F	1	-
35-382	15X10	F	1	6
35-383	15X12	F	1	6
35-4555	15	F	1	-
35-384	18X4	F	1	6
35-385	18X6	F	1	5
35-386	18X8	F	1	4
35-387	18X10	F	1	4
35-388	18X12	F	1	3
35-389	18X15	F	1	3
35-390	18	F	1	2
35-391	21X4	F	1	4
35-470	21 X 6	F	1	-
35-392	21X8	F	1	3
35-393	21X10	F	1	3
35-394	21X12	F	1	3
35-395	21X15	F	1	2
35-396	21X18	F	1	2
35-397	21	F	1	1
35-398	24X4	F	1	3
35-399	24X6	F	1	2
35-400	24X8	F	1	2
35-401	24X10	F	1	2
35-402	24X12	F	1	2
35-403	24X15	F	1	2
35-404	24X18	F	1	1
35-405	24X21	F	1	1
35-406	24	F	1	1
35-407	27X4	F	1	2
35-408	27X6	F	1	2
35-409	27X8	F	1	2
35-410	27X10	F	1	1
35-411	27X12	F	1	1
35-412	27X15	F	1	1
35-413	27X18	F	1	1
35-414	27X21	F	1	1
35-415	27X24	F	1	1
35-416	27	F	1	1

WYE GxGxG

PART NO.	SIZE		BOX	PALLET
35-417	30X4	F	1	1
35-418	30X6	F	1	1
35-419	30X8	F	1	1
35-420	30X10	F	1	1
35-421	30X12	F	1	1
35-422	30X15	F	1	1
35-423	30X18	F	1	1
35-424	30X21	F	1	1
35-425	30X24	F	1	-
35-426	30X27	F	1	-
35-427	30	F	1	-
35-428	36X4	F	1	1
35-429	36X6	F	1	1
35-430	36X8	F	1	1
35-431	36X10	F	1	1
35-432	36X12	F	1	-
35-433	36X15	F	1	-
35-434	36X18	F	1	-
35-435	36X21	F	1	-
35-436	36X24	F	1	-
35-437	36X27	F	1	-
35-438	36X30	F	1	-
35-439	36	F	1	-

WYE SxGxG



PART NO.	SIZE		BOX	PALLET
35-1505	4	M	10	120
35-1506	6 X 4	M	1	75
35-1507	6	M	1	50
35-1508	8X4	M	1	45
35-1509	8X6	M	1	34
35-493	8	M	2	12
35-440	10X4	F	1	24

WYE SxGxG

PART NO.	SIZE		BOX	PALLET
35-441	10X6	F	1	20
35-442	10X8	F	1	15
35-443	10	F	1	12
35-444	12X4	F	1	16
35-445	12X6	F	1	15
35-446	12X8	F	1	12
35-447	12X10	F	1	9
35-448	12	F	1	8
35-449	15X4	F	1	11
35-450	15X6	F	1	9
35-461	15X8	F	1	8
35-464	15X10	F	1	6
35-465	15X12	F	1	5
35-466	15	F	1	5
35-467	18X4	F	1	6
35-468	18X6	F	1	5
35-469	18X8	F	1	5
35-471	18X10	F	1	4
35-472	18X12	F	1	4
35-473	18X15	F	1	3
35-474	18	F	1	2
35-475	21X4	F	1	4
35-476	21X6	F	1	4
35-477	21X8	F	1	3
35-478	21X10	F	1	3
35-479	21X12	F	1	3
35-480	21X15	F	1	2
35-481	21X18	F	1	2
35-482	21	F	1	1
35-483	24X4	F	1	3
35-484	24X6	F	1	3
35-485	24X8	F	1	2
35-486	24X10	F	1	2
35-487	24X12	F	1	2
35-488	24X15	F	1	2
35-489	24X18	F	1	1
35-490	24X21	F	1	1
35-491	24	F	1	1
35-492	27X4	F	1	2
35-494	27X6	F	1	2
35-495	27X8	F	1	2
35-496	27X10	F	1	1
35-497	27X12	F	1	1

WYE SxGxG

PART NO.	SIZE		BOX	PALLET
35-498	27X15	F	1	1
35-499	27X18	F	1	1
35-500	27X21	F	1	1
35-501	27X24	F	1	1
35-502	27	F	1	1
35-503	30X4	F	1	1
35-504	30X6	F	1	1
35-505	30X8	F	1	1
35-506	30X10	F	1	1
35-507	30X12	F	1	1
35-508	30X15	F	1	1
35-509	30X18	F	1	1
35-510	30X21	F	1	1
35-511	30X24	F	1	-
35-512	30X27	F	1	-
35-513	30	F	1	-
35-514	36X4	F	1	1
35-515	36X6	F	1	1
35-516	36X8	F	1	1
35-517	36X10	F	1	1
35-518	36X12	F	1	1
35-519	36X15	F	1	-
35-520	36X18	F	1	-
35-521	36X21	F	1	-
35-522	36X24	F	1	-
35-523	36X27	F	1	-
35-524	36X30	F	1	-
35-525	36	F	1	-

COMBO WYE & 45 BEND 2PC



PART NO.	SIZE		BOX	PALLET
35-1552	4	M	1	-
35-1554	6	M	1	-

COMBO WYE & 45 BEND 2PC

PART NO.	SIZE		BOX	PALLET
35-1740	8	M	1	20
35-1553	6X4	M	1	-
35-1555	8X4	M	1	-
35-1556	8X6	M	1	-
35-1558	10X6	M	1	-
35-330	12X4	M	1	12
35-331	12X6	M	1	12

DOUBLE WYE GxGxGxG



PART NO.	SIZE		BOX	PALLET
35-526	4	F	1	100
35-1510	6X4	M	1	60
35-1511	6	M	1	34
35-47	8X4	M	1	30
35-48	8X6	M	1	26
35-527	8	F	1	15
35-528	10X4	F	1	21
35-529	10X6	F	1	17
35-530	10X8	F	1	12
35-531	10	F	1	8
35-532	12X4	F	1	15
35-533	12X6	F	1	13
35-534	12X8	F	1	10
35-535	12X10	F	1	7
35-536	12	F	1	6
35-537	15X4	F	1	1
35-538	15X6	F	1	9
35-539	15X8	F	1	7
35-540	15X10	F	1	5
35-541	15X12	F	1	4
35-542	15	F	1	3
35-543	18X4	F	1	6
35-544	18X6	F	1	5

DOUBLE WYE GxGxGxG

PART NO.	SIZE		BOX	PALLET
35-545	18X8	F	1	4
35-546	18X10	F	1	3
35-547	18X12	F	1	3
35-548	18X15	F	1	2
35-549	18	F	1	1
35-550	21X4	F	1	4
35-551	21X6	F	1	3
35-552	21X8	F	1	3
35-553	21X10	F	1	2
35-554	21X12	F	1	2
35-555	21X15	F	1	1
35-556	21X18	F	1	1
35-557	21	F	1	1
35-558	24X4	F	1	3
35-559	24X6	F	1	2
35-560	24X8	F	1	2
35-561	24X10	F	1	2
35-562	24X12	F	1	1
35-563	24X15	F	1	1
35-564	24X18	F	1	1
35-565	24X21	F	1	1
35-566	24	F	1	1
35-567	27X4	F	1	2
35-568	27X6	F	1	2
35-569	27X8	F	1	2
35-570	27X10	F	1	1
35-571	27X12	F	1	1
35-572	27X15	F	1	1
35-573	27X18	F	1	1
35-574	27X21	F	1	1
35-575	27X24	F	1	-
35-576	27	F	1	1
35-577	30X4	F	1	1
35-578	30X6	F	1	1
35-579	30X8	F	1	1
35-580	30X10	F	1	1
35-581	30X12	F	1	1
35-582	30X15	F	1	1
35-583	30X18	F	1	1
35-584	30X21	F	1	-
35-585	30X24	F	1	-
35-586	30X27	F	1	-
35-587	30	F	1	-



DOUBLE WYE GxGxGxG

PART NO.	SIZE		BOX	PALLET
35-588	36X4	F	1	1
35-589	36X6	F	1	1
35-590	36X8	F	1	1
35-591	36X10	F	1	1
35-592	36X12	F	1	-
35-593	36X15	F	1	-
35-594	36X18	F	1	-
35-595	36X21	F	1	-
35-596	36X24	F	1	-
35-597	36X27	F	1	-
35-598	36X30	F	1	-
35-599	36	F	1	-

DOUBLE WYE SxGxGxG



PART NO.	SIZE		BOX	PALLET
35-1515	6X4	M	1	-
35-1516	6	M	1	34
35-77	8X4	M	1	30
35-78	8X6	M	1	26

CROSS GxGxGxG



PART NO.	SIZE		BOX	PALLET
35-3031	4	F	1	-
35-2032	6X4	F	1	60
35-2033	6	F	1	41

CROSS GxGxGxG

PART NO.	SIZE		BOX	PALLET
35-2034	8X4	F	1	34
35-2035	8X6	F	1	27
35-2036	8	F	1	19
35-2037	10X4	F	1	23
35-2038	10X6	F	1	17
35-2039	10X8	F	1	12
35-2040	10	F	1	8
35-2041	12X4	F	1	15
35-2042	12X6	F	1	13
35-2043	12X8	F	1	10
35-2044	12X10	F	1	7
35-2045	12	F	1	8
35-2046	15X4	F	1	11
35-2047	15X6	F	1	9
35-2048	15X8	F	1	8
35-2049	15X10	F	1	7
35-2050	15X12	F	1	6
35-2051	15	F	1	4
35-2052	18X4	F	1	6
35-2053	18X6	F	1	6
35-2054	18X8	F	1	5
35-2055	18X10	F	1	4
35-2056	18X12	F	1	4
35-2057	18X15	F	1	3
35-2058	18	F	1	2
35-2059	21X4	F	1	4
35-2060	21X6	F	1	4
35-2061	21X8	F	1	3
35-2062	21X10	F	1	2
35-2063	21X12	F	1	2
35-2064	21X15	F	1	2
35-2065	21X18	F	1	2
35-2066	21	F	1	1
35-2067	24X4	F	1	3
35-2068	24X6	F	1	3
35-2069	24X8	F	1	2
35-2070	24X10	F	1	2
35-2071	24X12	F	1	2
35-2072	24X15	F	1	1
35-2073	24X18	F	1	1
35-2074	24X21	F	1	1
35-2075	24	F	1	1
35-2076	27X4	F	1	2

CROSS GxGxGxG

PART NO.	SIZE		BOX	PALLET
35-2077	27X6	F	1	2
35-2078	27X8	F	1	2
35-2079	27X10	F	1	1
35-2080	27X12	F	1	1
35-2081	27X15	F	1	1
35-2082	27X18	F	1	1
35-2083	27X21	F	1	1
35-2084	27X24	F	1	1
35-2085	27	F	1	1

SADDLE TEE



PART NO.	SIZE		BOX	PALLET
35-1579	6X4	M	12	384
35-245	8X4	M	10	320
35-246	8X6	M	4	96
35-247	10X4	M	6	192
35-248	10X6	M	4	96
35-250	12X4	M	6	192
35-251	12X6	M	4	96
35-254	15X4	M	6	192
35-255	15X6	M	4	96
35-259	18X4	M	6	192
35-260	18X6	M	4	96

SADDLE WYE



PART NO.	SIZE		BOX	PALLET
35-1578	6X4	M	6	270

SADDLE WYE

PART NO.	SIZE	BOX	PALLET
35-285	8X4	M	6 270
35-286	8X6	M	4 72
35-287	10X4	M	6 192
35-288	10X6	M	4 72
35-291	12X4	M	6 192
35-292	12X6	M	4 72
35-295	15X4	M	1 -
35-296	15X6	M	4 72
35-300	18X4	M	1 -
35-301	18X6	M	4 72

SDR35 X DWV WYE GxGxH



PART NO.	SIZE	BOX	PALLET
35-3334	8X4	F	1 -
35-3086	8X6	F	1 -
35-3335	10X4	F	1 -
35-3106	10X6	F	1 -
35-3223	12X4	F	1 -
35-3126	12X6	F	1 -

CAP w/GASKET



PART NO.	SIZE	BOX	PALLET
35-1623	4	M	25 1125

CAP w/GASKET

PART NO.	SIZE	BOX	PALLET
35-1624	6	M	15 360
35-1625	8	M	8 192
35-83	10	M	1 72
35-84	12	M	1 40
35-2237	15	F	1 13
35-2238	18	F	1 9
35-2239	21	F	1 5
35-2240	24	F	1 3
35-2241	27	F	1 2
35-2242	30	F	1 1
35-2243	36	F	1 1

ELBOW 90 GxG



PART NO.	SIZE	BOX	PALLET
35-1596	4	M	10 240
35-1597	6	M	1 100
35-96	8	M	1 54
35-105	10	M	1 24
35-114	12	M	1 18
35-111	15	F	1 -
35-117	18	F	1 3
35-118	21	F	1 2
35-119	24	F	1 1
35-121	27	F	1 1
35-122	30	F	1 -
35-123	36	F	1 -

ELBOW 90 GxS



PART NO.	SIZE	BOX	PALLET
35-1598	4	M	10 240
35-1599	6	M	1 100
35-97	8	M	1 54
35-124	10	F	1 19
35-125	12	F	1 11
35-126	15	F	1 6
35-127	18	F	1 3
35-128	21	F	1 2
35-129	24	F	1 1
35-130	27	F	1 1
35-131	30	F	1 -
35-132	36	F	1 -

ELBOW 90 LONG SWEEP GxG



PART NO.	SIZE	BOX	PALLET
35-1586	4	M	6 192
35-1587	6	M	4 24
35-1588	8	M	2 12



ELBOW 90 LONG SWEEP G x S



PART NO.	SIZE	BOX	PALLET	
35-1591	4	M	6	192
35-1592	6	M	4	24
35-1593	8	M	2	12

ELBOW 45 GxG



PART NO.	SIZE	BOX	PALLET	
35-1600	4	M	16	384
35-1601	6	M	1	110
35-94	8	M	1	50
35-103	10	M	1	35
35-112	12	M	1	18
35-133	15	F	1	8
35-134	18	F	1	4
35-135	21	F	1	3
35-1114	24	F	1	2
35-136	27	F	1	1
35-137	30	F	1	1
35-138	36	F	1	1

ELBOW 45 GxS



PART NO.	SIZE	BOX	PALLET	
35-1602	4	M	16	384
35-1603	6	M	1	120
35-95	8	M	1	50
35-113	12	M	1	27
35-139	15	F	1	9
35-140	18	F	1	4
35-141	21	F	1	3
35-142	24	F	1	2
35-143	27	F	1	1
35-144	30	F	1	1
35-145	36	F	1	1

ELBOW 30 GxG



PART NO.	SIZE	BOX	PALLET	
35-162	4	F	1	300
35-163	6	F	1	100
35-164	8	F	1	60
35-165	10	F	1	30
35-166	12	F	1	20
35-167	15	F	1	10
35-168	18	F	1	6
35-169	21	F	1	4

ELBOW 30 GxS

PART NO.	SIZE	BOX	PALLET	
35-170	24	F	1	3
35-171	27	F	1	2
35-172	30	F	1	1
35-173	36	F	1	1

ELBOW 30 GxS



PART NO.	SIZE	BOX	PALLET	
35-174	4	F	1	300
35-175	6	F	1	100
35-176	8	F	1	43
35-177	10	F	1	38
35-191	12	F	1	25
35-192	15	F	1	14
35-193	18	F	1	8
35-194	21	F	1	5
35-195	24	F	1	3
35-196	27	F	1	2
35-197	30	F	1	1
35-198	36	F	1	1

ELBOW 22.5 GxG



PART NO.	SIZE	BOX	PALLET	
35-1604	4	M	18	432

ELBOW 22.5 GxG

PART NO.	SIZE		BOX	PALLET
35-1605	6	M	1	140
35-90	8	M	1	80
35-99	10	M	1	36
35-108	12	M	1	16
35-146	15	F	1	9
35-147	18	F	1	5
35-148	21	F	1	3
35-149	24	F	1	2
35-150	27	F	1	1
35-151	30	F	1	1
35-152	36	F	1	1

ELBOW 22.5 GxS



PART NO.	SIZE		BOX	PALLET
35-1606	4	M	18	432
35-1607	6	M	1	140
35-91	8	M	1	80
35-153	10	F	1	29
35-154	12	F	1	19
35-155	15	F	1	10
35-156	18	F	1	5
35-157	21	F	1	3
35-158	24	F	1	2
35-159	27	F	1	2
35-160	30	F	1	1
35-161	36	F	1	1

ELBOW 11.25 GxG



PART NO.	SIZE		BOX	PALLET
35-199	4	F	1	300
35-200	6	F	1	150
35-201	8	F	1	60
35-202	10	F	1	33
35-1112	12	F	1	-
35-203	15	F	1	12
35-204	18	F	1	7
35-205	21	F	1	4
35-206	24	F	1	3
35-207	27	F	1	2
35-208	30	F	1	1
35-209	36	F	1	1

ELBOW 11.25 GxS



PART NO.	SIZE		BOX	PALLET
35-210	4	F	1	300
35-211	6	F	1	150
35-212	8	F	1	60
35-213	10	F	1	43
35-120	12	F	1	-
35-214	15	F	1	16
35-215	18	F	1	9

ELBOW 11.25 GxS

PART NO.	SIZE		BOX	PALLET
35-216	21	F	1	5
35-220	24	F	1	4
35-221	27	F	1	3
35-222	30	F	1	2
35-223	36	F	1	1

REPAIR COUPLING GxG



PART NO.	SIZE		BOX	PALLET
35-1549	4	M	20	480
35-1550	6	M	1	150
35-1551	8	M	1	80
35-230	10	M	1	36
35-231	12	M	1	18
35-226	15	F	1	14
35-227	18	F	1	10
35-228	21	F	1	7
35-229	24	F	1	5
35-232	27	F	1	3
35-233	30	F	1	1
35-234	36	F	1	1

STOP COUPLING GxG



PART NO.	SIZE		BOX	PALLET
35-1546	4	M	20	480



STOP COUPLING GxG

PART NO.	SIZE		BOX	PALLET
35-1547	6	M	1	150
35-1548	8	M	1	80
35-236	10	M	1	36
35-237	12	M	1	18
35-235	15	F	1	17
35-238	18	F	1	8
35-239	21	F	1	5
35-240	24	F	1	3
35-241	27	F	1	2
35-242	30	F	1	1
35-243	36	F	1	1

REDUCER BUSHING ECCENTRIC SxG



PART NO.	SIZE		BOX	PALLET
35-1626	6X4	M	16	288
35-885	8X4	M	5	120
35-895	8X6	M	4	96
35-898	10X6	F	1	-
35-2290	12X6	F	1	-

TEMP PLUG



PART NO.	SIZE		BOX	PALLET
35-1610	4	M	6	2250

TEMP PLUG

PART NO.	SIZE		BOX	PALLET
35-1611	6	M	40	1800
35-1612	8	M	8	540

PERMANENT PLUG



PART NO.	SIZE		BOX	PALLET
35-1613	4	M	24	1080
35-1614	6	M	18	432
35-1615	8	M	9	162
35-224	10	M	1	72
35-225	12	M	2	36
35-2230	15	F	1	16
35-2231	18	F	1	10
35-2232	21	F	1	6
35-2233	24	F	1	4
35-2234	27	F	1	4
35-2235	30	F	1	1
35-2236	36	F	1	1

INCREASER COUPLING CONCENTRIC GxG



PART NO.	SIZE		BOX	PALLET
35-1640	6X4	M	8	-
35-1641	8X4	M	8	-
35-1642	8X6	M	4	-
35-244	10X4	F	1	30

INCREASER COUPLING CONCENTRIC GxG

PART NO.	SIZE		BOX	PALLET
35-261	10X6	F	1	27
35-262	10X8	F	1	25
35-263	12X4	F	1	20
35-264	12X6	F	1	19
35-265	12X8	F	1	18
35-266	12X10	F	1	15
35-267	15X4	F	1	13
35-268	15X6	F	1	12
35-2289	15X8	F	1	11
35-269	15X10	F	1	10
35-2288	15X12	F	1	9
35-270	18X4	F	1	7
35-271	18X6	F	1	7
35-272	18X8	F	1	6
35-273	18X10	F	1	6
35-274	18X12	F	1	6
35-275	18X15	F	1	-
35-276	21X4	F	1	4
35-277	21X6	F	1	4
35-278	21X8	F	1	3
35-279	21X10	F	1	3
35-280	21X12	F	1	3
35-281	21X15	F	1	3
35-282	21X18	F	1	-
35-283	24X4	F	1	3
35-284	24X6	F	1	3
35-289	24X8	F	1	3
35-290	24X10	F	1	3
35-293	24X12	F	1	3
35-2287	24X15	F	1	2
35-294	24X18	F	1	2
35-297	24X21	F	1	-
35-298	27X4	F	1	2
35-299	27X6	F	1	2
35-302	27X8	F	1	2
35-303	27X10	F	1	2
35-304	27X12	F	1	2
35-305	27X15	F	1	2
35-306	27X18	F	1	2
35-307	27X21	F	1	1
35-308	27X24	F	1	-
35-309	30X4	F	1	1

INCREASER COUPLING CONCENTRIC GxG

PART NO.	SIZE	BOX	PALLET
35-310	30X6	F	1 1
35-311	30X8	F	1 1
35-312	30X10	F	1 1
35-313	30X12	F	1 1
35-314	30X15	F	1 1
35-315	30X18	F	1 1
35-316	30X21	F	1 1
35-317	30X24	F	1 1
35-318	30X27	F	1 -
35-319	36X4	F	1 1
35-320	36X6	F	1 1
35-321	36X8	F	1 1
35-322	36X10	F	1 1
35-323	36X12	F	1 1
35-324	36X15	F	1 1
35-325	36X18	F	1 1
35-327	36X21	F	1 1
35-328	36X24	F	1 1
35-329	36X27	F	1 1
35-332	36X30	F	1 -

REDUCER BUSHING CONCENTRIC SxG



PART NO.	SIZE	BOX	PALLET
35-1627	6X4	M	10 -
35-181	8X4	M	5 -
35-182	8X6	M	5 -
35-183	10X4	M	2 36
35-2086	10X6	F	1 33
35-2087	10X8	F	1 30
35-187	12X4	M	2 -
35-2089	12X6	F	1 19
35-2090	12X8	F	1 19

REDUCER BUSHING CONCENTRIC SxG

PART NO.	SIZE	BOX	PALLET
35-190	12X10	M	2 -
35-2092	15X4	F	1 12
35-2093	15X6	F	1 12
35-180	15X8	F	1 -
35-2095	15X10	F	1 10
35-179	15X12	F	1 -
35-2097	18X4	F	1 6
35-2098	18X6	F	1 6
35-2099	18X8	F	1 6
35-2100	18X10	F	1 6
35-2101	18X12	F	1 6
35-2102	18X15	F	1 5
35-2103	21X4	F	1 3
35-2104	21X6	F	1 3
35-2105	21X8	F	1 3
35-2106	21X10	F	1 3
35-2107	21X12	F	1 3
35-2108	21X15	F	1 3
35-2109	21X18	F	1 3
35-2110	24X4	F	1 3
35-2111	24X6	F	1 3
35-2112	24X8	F	1 2
35-2113	24X10	F	1 2
35-2114	24X12	F	1 2
35-178	24X15	F	1 2
35-2116	24X18	F	1 2
35-2117	24X21	F	1 2
35-2118	27X4	F	1 2
35-2119	27X6	F	1 2
35-2120	27X8	F	1 2
35-2121	27X10	F	1 2
35-2122	27X12	F	1 2
35-2123	27X15	F	1 1
35-2124	27X18	F	1 1
35-2125	27X21	F	1 1
35-2126	27X24	F	1 1
35-2127	30X4	F	1 1
35-2128	30X6	F	1 1
35-2129	30X8	F	1 1
35-2130	30X10	F	1 1
35-2131	30X12	F	1 1
35-2132	30X15	F	1 1

REDUCER BUSHING CONCENTRIC SxG

PART NO.	SIZE	BOX	PALLET
35-2133	30X18	F	1 1
35-2134	30X21	F	1 1
35-2135	30X24	F	1 1
35-2136	30X27	F	1 1
35-2137	36X4	F	1 1
35-2138	36X6	F	1 1
35-2139	36X8	F	1 1
35-2140	36X10	F	1 1
35-2141	36X12	F	1 1
35-2142	36X15	F	1 1
35-2143	36X18	F	1 1
35-2144	36X21	F	1 1
35-2145	36X24	F	1 1
35-2146	36X27	F	1 1
35-2147	36X30	F	1 1

INCREASER COUPLING ECCENTRIC GxG



PART NO.	SIZE	BOX	PALLET
35-1630	6X4	M	16 192
35-2149	8X4	F	1 50
35-2150	8X6	F	1 50
35-2153	10X8	F	1 25
35-2154	12X4	F	1 20
35-2155	12X6	F	1 19
35-2156	12X8	F	1 17
35-2157	12X10	F	1 15
35-2158	15X4	F	1 12
35-2159	15X6	F	1 12
35-2286	15X8	F	1 11
35-2160	15X10	F	1 10
35-2285	15X12	F	1 9
35-2161	18X4	F	1 6



**INCREASER COUPLING
ECCENTRIC GxG**

PART NO.	SIZE	BOX	PALLET	
35-2162	18X6	F	1	6
35-2163	18X8	F	1	6
35-2164	18X10	F	1	6
35-2165	18X12	F	1	5
35-2166	18X15	F	1	5
35-2167	21X4	F	1	3
35-2168	21X6	F	1	3
35-2169	21X8	F	1	3
35-2170	21X10	F	1	3
35-2171	21X12	F	1	3
35-2172	21X15	F	1	3
35-2173	21X18	F	1	2
35-2174	24X4	F	1	3
35-2175	24X6	F	1	3
35-2176	24X8	F	1	2
35-2177	24X10	F	1	2
35-2178	24X12	F	1	2
35-2284	24X15	F	1	2
35-2179	24X18	F	1	2
35-2180	24X21	F	1	2
35-2181	27X4	F	1	2
35-2182	27X6	F	1	2
35-2183	27X8	F	1	2
35-2184	27X10	F	1	2
35-2185	27X12	F	1	2
35-2186	27X15	F	1	1
35-2187	27X18	F	1	1
35-2188	27X21	F	1	1
35-2189	27X24	F	1	1
35-2190	30X4	F	1	1
35-2191	30X6	F	1	1
35-2192	30X8	F	1	1
35-2193	30X10	F	1	1
35-2194	30X12	F	1	1
35-2195	30X15	F	1	1
35-2196	30X18	F	1	1
35-2197	30X21	F	1	1
35-2198	30X24	F	1	1
35-2199	30X27	F	1	1
35-2200	36X4	F	1	1
35-2201	36X6	F	1	1
35-2202	36X8	F	1	1

**INCREASER COUPLING
ECCENTRIC GxG**

PART NO.	SIZE	BOX	PALLET	
35-2203	36X10	F	1	1
35-2204	36X12	F	1	1
35-2205	36X15	F	1	1
35-2206	36X18	F	1	1
35-2207	36X21	F	1	1
35-2208	36X24	F	1	1
35-2209	36X27	F	1	1
35-2210	36X30	F	1	-

ADAPTER SWR G x DWV H



PART NO.	SIZE	BOX	PALLET	
35-1678	4X3	M	36	864
35-1679	4	M	22	528

ADAPTER SWR G x SW H



PART NO.	SIZE	BOX	PALLET	
35-1648	4	M	6	378
35-1649	6	M	1	150
35-1650	8	M	1	80

ADAPTER SWR G x DWV SPGT



PART NO.	SIZE	BOX	PALLET	
35-1688	4	M	16	-
35-1689	6	M	8	-

ADAPTER SWR G x SWR SPGT



PART NO.	SIZE	BOX	PALLET	
35-1700	4	M	6	450
35-1701	6	M	1	150
35-1702	8	M	1	80
35-2272	10	F	1	41
35-2273	12	F	1	27
35-2274	15	F	1	15
35-2275	18	F	1	9
35-2276	21	F	1	6
35-2277	24	F	1	4
35-2278	27	F	1	2
35-2279	30	F	1	1
35-2280	36	F	1	1

ADAPTER SDR 35XC900 GXG



PART NO.	SIZE	BOX	PALLET
35-664	4	F	6 378
35-6606	6	F	1 -
35-6608	8	F	1 -
35-6610	10	F	1 -

ADAPTER SWR H X DWV G



PART NO.	SIZE	BOX	PALLET
35-1314	4	M	6 -
35-1315	6X4	M	4 -
35-1316	6	M	4 -

ADAPTER SWR SPGxDWV G



PART NO.	SIZE	BOX	PALLET
35-1311	4	M	6 -

ADAPTER SWR SPGxDWV G

PART NO.	SIZE	BOX	PALLET
35-1312	6X4	M	5 -
35-1313	6	M	4 -

ADAPTER SEWER x IPS GXG



PART NO.	SIZE	BOX	PALLET
35-2259	4	M	6 -
35-2260	6X4	M	4 -
35-2261	6	M	3 -
35-2262	8	F	1 50
35-2263	10	F	1 27
35-2264	12	F	1 19
35-2265	15X14	F	1 11
35-2266	15X16	F	1 10
35-2267	18	F	1 6
35-2268	21X20	F	1 4

SANDED MANHOLE SLEEVE ADAPTER NO STOP STYLE GxSLIP



PART NO.	SIZE	BOX	PALLET
35-1608	4	M	15 675
35-1609	6	M	1 180

SANDED MANHOLE SLEEVE ADAPTER NO STOP STYLE GxSLIP

PART NO.	SIZE	BOX	PALLET
35-217	8	M	1 120
35-218	10	M	1 60
35-219	12	M	1 36
35-2211	15	F	1 23
35-2212	18	F	1 16
35-2213	21	F	1 9
35-2214	24	F	1 7
35-2215	27	F	1 5
35-2216	30	F	1 3
35-2217	36	F	1 3

SANDED MANHOLE SLEEVE ADAPTOR STOP STYLE GxSLIP



PART NO.	SIZE	BOX	PALLET
35-2218	4	F	1 200
35-2219	6	F	1 100
35-2220	8	F	1 50
35-2221	10	F	1 23
35-2222	12	F	1 18
35-2223	15	F	1 15
35-2224	18	F	1 10
35-2225	21	F	1 6
35-2226	24	F	1 4
35-2227	27	F	1 3
35-2228	30	F	1 2
35-2229	36	F	1 2



SDR 26

GASKETED FITTINGS



SDR 26 HEAVY WALL FITTINGS

Tigre USA sets the standard by offering industry leading SDR 26 Gasketed Fittings.

Injection molded from 4" to 12" and fabricated fittings are sourced from 15" to 36". Heavy wall construction, SDR 26 fittings are constructed to best work underground, at a depth greater than 9'.

Features a dual lipped gasket. Where solvent welding fuses the pipe and fitting together into one, gasketed fittings use a mechanical joint to join the pipe and fitting. Manufactured to ASTM Standards, NSF Certified.

Tigre USA parts are made in the USA.

Gasketed SDR 26 Heavy Wall PVC Fittings:

- Manufactured in accordance with ASTM D-3034, ASTM F-1336 and CSA B182.2.
- Injection molded from virgin PVC compound having a cell classification of 12454 or 13343 in accordance with, and certified by the NSF to meet ASTM D-1784.
- Gaskets manufactured in accordance with ASTM F-477 or ASTM F-913.
- Gasket joints comply with ASTM D-3212 Internal Pressure Test (ex-filtration) and Vacuum Test (infiltration) with gasketed joint misalignment and 5% top load deflection.
- Gaskets shall be firmly seated in fitting in order to ensure proper installation and to prevent dislocation or misalignment during system assembly.
- Third party tested, certified and listed by NSF to meet specifications defined in ASTM D-3034, ASTM F-1336 and CSA B182.2, where applicable.

INFORMATION FOR USE.

Do not use fittings for compressed air or gases.

Do not test pvc piping systems with compressed air or gases.

Do not use fittings with liquids not recommended by Tigre.

Modification of fittings voids the warranty.

Specs subject to change without notice.

NSF certified.



TEE GxGxG



PART NO.	SIZE	BOX	PALLET	
37-1024	4	M	10	180
37-1025	6X4	M	4	54
37-1026	6	M	1	75
37-87	8X4	M	1	54
37-88	8X6	M	1	41
37-89	8	M	2	13
37-1018	10X4	F	1	18
37-1019	10X6	F	1	16
37-1023	10X8	F	1	13
37-1031	10	F	1	11
37-1032	12X4	F	1	13
37-1043	12X6	F	1	11
37-1044	12X8	F	1	10
37-1045	12X10	F	1	8
37-1046	12	F	1	7
37-1047	15X4	F	1	8
37-1048	15X6	F	1	7
37-1049	15X8	F	1	6
37-1050	15X10	F	1	6
37-1051	15X12	F	1	5
37-1052	15	F	1	4
37-1053	18X4	F	1	4
37-1054	18X6	F	1	4
37-1055	18X8	F	1	4
37-1056	18X10	F	1	3
37-1057	18X12	F	1	3
37-1058	18X15	F	1	3
37-1059	18	F	1	2
37-1060	21X4	F	1	3
37-1061	21X6	F	1	2
37-1062	21X8	F	1	2
37-1063	21X10	F	1	2
37-1064	21X12	F	1	2
37-1065	21X15	F	1	2
37-1066	21X18	F	1	1

TEE GxGxG

PART NO.	SIZE	BOX	PALLET	
37-1067	21	F	1	1
37-1068	24X4	F	1	2
37-1069	24X6	F	1	2
37-1070	24X8	F	1	2
37-1071	24X10	F	1	2
37-1072	24X12	F	1	1
37-1073	24X15	F	1	1
37-1074	24X18	F	1	1
37-1075	24X21	F	1	1
37-1076	24	F	1	1
37-1077	27X4	F	1	1
37-1078	27X6	F	1	1
37-1079	27X8	F	1	1
37-1080	27X10	F	1	1
37-1081	27X12	F	1	1
37-1082	27X15	F	1	1
37-1083	27X18	F	1	1
37-1084	27X21	F	1	1
37-1085	27X24	F	1	1
37-1086	27	F	1	1
37-1087	30X4	F	1	1
37-1088	30X6	F	1	1
37-1089	30X8	F	1	1
37-1090	30X10	F	1	1
37-1091	30X12	F	1	1
37-1092	30X15	F	1	1
37-1093	30X18	F	1	1
37-1094	30X21	F	1	1
37-1095	30X24	F	1	-
37-1096	30X27	F	1	-
37-1097	30	F	1	-
37-1098	36X4	F	1	1
37-1099	36X6	F	1	1
37-1100	36X8	F	1	1
37-1101	36X10	F	1	1
37-1102	36X12	F	1	1
37-1103	36X15	F	1	-
37-1104	36X18	F	1	-
37-1105	36X21	F	1	-
37-1106	36X24	F	1	-
37-1107	36X27	F	1	-
37-1108	36X30	F	1	-
37-1109	36	F	1	-

TEE SxGxG



PART NO.	SIZE	BOX	PALLET	
37-1110	4	M	10	180
37-1111	6X4	F	1	46
37-1112	6	F	1	38
37-1113	8X4	F	1	29
37-1114	8X6	F	1	26
37-1115	8	F	1	19
37-1116	10X4	F	1	18
37-1117	10X6	F	1	16
37-1118	10X8	F	1	13
37-1119	10	F	1	11
37-1120	12X4	F	1	13
37-1121	12X6	F	1	11
37-1122	12X8	F	1	10
37-1123	12X10	F	1	8
37-1124	12	F	1	7
37-1125	15X4	F	1	8
37-1126	15X6	F	1	7
37-1127	15X8	F	1	6
37-1128	15X10	F	1	6
37-1129	15X12	F	1	5
37-1130	15	F	1	4
37-1131	18X4	F	1	4
37-1132	18X6	F	1	4
37-1133	18X8	F	1	4
37-1134	18X10	F	1	3
37-1135	18X12	F	1	3
37-1136	18X15	F	1	3
37-1137	18	F	1	2
37-1138	21X4	F	1	3
37-1139	21X6	F	1	2
37-1140	21X8	F	1	2
37-1141	21X10	F	1	2
37-1142	21X12	F	1	2
37-1143	21X15	F	1	2
37-1144	21X18	F	1	1

TEE SxGxG

PART NO.	SIZE		BOX	PALLET
37-1145	21	F	1	1
37-1146	24X4	F	1	2
37-1147	24X6	F	1	2
37-1148	24X8	F	1	2
37-1149	24X10	F	1	2
37-1150	24X12	F	1	1
37-1151	24X15	F	1	1
37-1152	24X18	F	1	1
37-1153	24X21	F	1	1
37-1154	24	F	1	1
37-1155	27X4	F	1	1
37-1156	27X6	F	1	1
37-1157	27X8	F	1	1
37-1158	27X10	F	1	1
37-1159	27X12	F	1	1
37-1160	27X15	F	1	1
37-1161	27X18	F	1	1
37-1162	27X21	F	1	1
37-1163	27X24	F	1	1
37-1164	27	F	1	1
37-1165	30X4	F	1	1
37-1166	30X6	F	1	1
37-1167	30X8	F	1	1
37-1168	30X10	F	1	1
37-1169	30X12	F	1	1
37-1170	30X15	F	1	1
37-1171	30X18	F	1	1
37-1172	30X21	F	1	1
37-1173	30X24	F	1	-
37-1174	30X27	F	1	-
37-1175	30	F	1	-
37-1176	36X4	F	1	1
37-1177	36X6	F	1	1
37-1178	36X8	F	1	1
37-1179	36X10	F	1	1
37-1180	36X12	F	1	1
37-1181	36X15	F	1	-
37-1182	36X18	F	1	-
37-1183	36X21	F	1	-
37-1184	36X24	F	1	-
37-1185	36X27	F	1	-
37-1186	36X30	F	1	-
37-1187	36	F	1	-

TWO WAY CLEANOUT TEE GxGxG



PART NO.	SIZE		BOX	PALLET
37-2004	4	M	6	-
37-2001	6	M	2	21

TEE WYE GxGxG



PART NO.	SIZE		BOX	PALLET
37-1027	4	M	10	-
37-1028	6X4	M	5	56
37-1029	6	M	1	48
37-808	8X4	M	1	41
37-809	8X6	M	1	39
37-140	8	M	2	13
37-1188	10X4	F	1	16
37-1189	10X6	F	1	14
37-1190	10X8	F	1	10
37-1191	10	F	1	7
37-1192	12X4	F	1	12
37-1193	12X6	F	1	10
37-1194	12X8	F	1	8
37-1195	12X10	F	1	5
37-1196	12	F	1	4
37-1197	15X4	F	1	7
37-1198	15X6	F	1	6
37-1199	15X8	F	1	5

TEE WYE GxGxG

PART NO.	SIZE		BOX	PALLET
37-1200	15X10	F	1	3
37-1201	15X12	F	1	3
37-1202	15	F	1	2
37-1203	18X4	F	1	4
37-1204	18X6	F	1	4
37-1205	18X8	F	1	3
37-1206	18X10	F	1	2
37-1207	18X12	F	1	2
37-1208	18X15	F	1	2
37-1209	18	F	1	1
37-1210	21X4	F	1	3
37-1211	21X6	F	1	3
37-1212	21X8	F	1	2
37-1213	21X10	F	1	2
37-1214	21X12	F	1	1
37-1215	21X15	F	1	1
37-1216	21X18	F	1	1
37-1217	21	F	1	1
37-1218	24X4	F	1	2
37-1219	24X6	F	1	2
37-1220	24X8	F	1	2
37-1221	24X10	F	1	1
37-1222	24X12	F	1	1
37-1223	24X15	F	1	1
37-1224	24X18	F	1	1
37-1225	24X21	F	1	1
37-1226	24	F	1	1
37-1227	27X4	F	1	1
37-1228	27X6	F	1	1
37-1229	27X8	F	1	1
37-1230	27X10	F	1	1
37-1231	27X12	F	1	1
37-1232	27X15	F	1	1
37-1233	27X18	F	1	1
37-1234	27X21	F	1	1
37-1235	27X24	F	1	-
37-1236	27	F	1	-
37-1237	30X4	F	1	1
37-1238	30X6	F	1	1
37-1239	30X8	F	1	1
37-1240	30X10	F	1	1
37-1241	30X12	F	1	1
37-1242	30X15	F	1	-



TEE WYE GxGxG

PART NO.	SIZE		BOX	PALLET
37-1243	30X18	F	1	-
37-1244	30X21	F	1	-
37-1245	30X24	F	1	-
37-1246	30X27	F	1	-
37-1247	30	F	1	-
37-1248	36X4	F	1	-
37-1249	36X6	F	1	-
37-1250	36X8	F	1	-
37-1251	36X10	F	1	-
37-1252	36X12	F	1	-
37-1253	36X15	F	1	-
37-1254	36X18	F	1	-
37-1255	36X21	F	1	-
37-1256	36X24	F	1	-
37-1257	36X27	F	1	-
37-1258	36X30	F	1	-
37-1259	36	F	1	-

TEE WYE SxGxG



PART NO.	SIZE		BOX	PALLET
37-1260	8	F	1	12
37-2111	8X4	M	3	15
37-1261	10X4	F	1	14
37-1262	10X6	F	1	12
37-1263	10X8	F	1	9
37-1264	10	F	1	7
37-1265	12X4	F	1	10
37-1266	12X6	F	1	8
37-1267	12X8	F	1	6
37-1268	12X10	F	1	5
37-1269	12	F	1	4
37-1270	15X4	F	1	7

TEE WYE SxGxG

PART NO.	SIZE		BOX	PALLET
37-1271	15X6	F	1	5
37-1272	15X8	F	1	4
37-1273	15X10	F	1	4
37-1274	15X12	F	1	3
37-1275	15	F	1	2
37-1276	18X4	F	1	4
37-1277	18X6	F	1	3
37-1278	18X8	F	1	3
37-1279	18X10	F	1	2
37-1280	18X12	F	1	2
37-1281	18X15	F	1	2
37-1282	18	F	1	1
37-1283	21X4	F	1	2
37-1284	21X6	F	1	2
37-1285	21X8	F	1	2
37-1286	21X10	F	1	2
37-1287	21X12	F	1	1
37-1288	21X15	F	1	1
37-1289	21X18	F	1	1
37-1290	21	F	1	1
37-1291	24X4	F	1	2
37-1292	24X6	F	1	2
37-1293	24X8	F	1	1
37-1294	24X10	F	1	1
37-1295	24X12	F	1	1
37-1296	24X15	F	1	1
37-1297	24X18	F	1	1
37-1298	24X21	F	1	1
37-1299	24	F	1	1
37-1300	27X4	F	1	1
37-1301	27X6	F	1	1
37-1302	27X8	F	1	1
37-1303	27X10	F	1	1
37-1304	27X12	F	1	1
37-1305	27X15	F	1	1
37-1306	27X18	F	1	1
37-1307	27X21	F	1	1
37-1308	27X24	F	1	-
37-1309	27	F	1	-
37-1310	30X4	F	1	1
37-1311	30X6	F	1	1
37-1312	30X8	F	1	1
37-1313	30X10	F	1	1

TEE WYE SxGxG

PART NO.	SIZE		BOX	PALLET
37-1314	30X12	F	1	1
37-1315	30X15	F	1	1
37-1316	30X18	F	1	-
37-1317	30X21	F	1	-
37-1318	30X24	F	1	-
37-1319	30X27	F	1	-
37-1320	30	F	1	-
37-1321	36X4	F	1	-
37-1322	36X6	F	1	-
37-1323	36X8	F	1	-
37-1324	36X10	F	1	-
37-1325	36X12	F	1	-
37-1326	36X15	F	1	-
37-1327	36X18	F	1	-
37-1328	36X21	F	1	-
37-1329	36X24	F	1	-
37-1330	36X27	F	1	-
37-1331	36X30	F	1	-
37-1332	36	F	1	-

DOUBLE TEE WYE GxGxGxG



PART NO.	SIZE		BOX	PALLET
37-1333	6X4	F	1	-
37-1334	6	F	1	-
37-1335	8X4	F	1	-
37-1336	8X6	F	1	-
37-1337	8	F	1	8
37-1338	10X4	F	1	13
37-1339	10X6	F	1	9
37-1340	10X8	F	1	6
37-1341	10	F	1	5
37-1342	12X4	F	1	9

DOUBLE TEE WYE GxGxGxG

PART NO.	SIZE		BOX	PALLET
37-1343	12X6	F	1	7
37-1344	12X8	F	1	5
37-1345	12X10	F	1	4
37-1346	12	F	1	3
37-1347	15X4	F	1	6
37-1348	15X6	F	1	4
37-1349	15X8	F	1	3
37-1350	15X10	F	1	3
37-1351	15X12	F	1	2
37-1352	15	F	1	2
37-1353	18X4	F	1	3
37-1354	18X6	F	1	3
37-1355	18X8	F	1	2
37-1356	18X10	F	1	2
37-1357	18X12	F	1	2
37-1358	18X15	F	1	1
37-1359	18	F	1	1
37-1360	21X4	F	1	2
37-1361	21X6	F	1	2
37-1362	21X8	F	1	2
37-1363	21X10	F	1	1
37-1364	21X12	F	1	1
37-1365	21X15	F	1	1
37-1366	21X18	F	1	1
37-1367	21	F	1	1
37-1368	24X4	F	1	2
37-1369	24X6	F	1	1
37-1370	24X8	F	1	1
37-1371	24X10	F	1	1
37-1372	24X12	F	1	1
37-1373	24X15	F	1	1
37-1374	24X18	F	1	1
37-1375	24X21	F	1	-
37-1376	24	F	1	-
37-1377	27X4	F	1	1
37-1378	27X6	F	1	1
37-1379	27X8	F	1	1
37-1380	27X10	F	1	1
37-1381	27X12	F	1	1
37-1382	27X15	F	1	1
37-1383	27X18	F	1	1
37-1384	27X21	F	1	-
37-1385	27X24	F	1	-

DOUBLE TEE WYE GxGxGxG

PART NO.	SIZE		BOX	PALLET
37-1386	27	F	1	-
37-1387	30X4	F	1	1
37-1388	30X6	F	1	1
37-1389	30X8	F	1	1
37-1390	30X10	F	1	1
37-1391	30X12	F	1	-
37-1392	30X15	F	1	-
37-1393	30X18	F	1	-
37-1394	30X21	F	1	-
37-1395	30X24	F	1	-
37-1396	30X27	F	1	-
37-1397	30	F	1	-
37-1398	36X4	F	1	-
37-1399	36X6	F	1	-
37-1400	36X8	F	1	-
37-1401	36X10	F	1	-
37-1402	36X12	F	1	-
37-1403	36X15	F	1	-
37-1404	36X18	F	1	-
37-1405	36X21	F	1	-
37-1406	36X24	F	1	-
37-1407	36X27	F	1	-
37-1408	36X30	F	1	-

COMBO WYE & 45 BEND 2 PC



PART NO.	SIZE		BOX	PALLET
37-139	4	M	1	-

WYE GxGxG



PART NO.	SIZE		BOX	PALLET
37-1033	4	M	10	120
37-1034	6X4	M	1	75
37-1035	6	M	1	50
37-1036	8X4	M	1	45
37-1037	8X6	M	1	34
37-1410	8	M	2	10
37-116	10X4	M	1	28
37-117	10X6	M	1	24
37-1411	10X8	F	1	11
37-1412	10	F	1	8
37-120	12X4	M	1	18
37-121	12X6	M	1	18
37-1413	12X8	F	1	8
37-1414	12X10	F	1	7
37-1415	12	F	1	6
37-1416	15X4	F	1	7
37-1417	15X6	F	1	6
37-1418	15X8	F	1	5
37-1419	15X10	F	1	5
37-1420	15X12	F	1	4
37-1421	15	F	1	3
37-1422	18X4	F	1	4
37-1423	18X6	F	1	4
37-1424	18X8	F	1	3
37-1425	18X10	F	1	3
37-1426	18X12	F	1	2
37-1427	18X15	F	1	2
37-1428	18	F	1	2
37-1429	21X4	F	1	2
37-1430	21X6	F	1	2
37-1431	21X8	F	1	2
37-1432	21X10	F	1	2



WYE GxGxG

PART NO.	SIZE		BOX	PALLET
37-1433	21X12	F	1	2
37-1434	21X15	F	1	1
37-1435	21X18	F	1	1
37-1436	21	F	1	1
37-1437	24X4	F	1	2
37-1438	24X6	F	1	2
37-1439	24X8	F	1	1
37-1440	24X10	F	1	1
37-1441	24X12	F	1	1
37-1442	24X15	F	1	1
37-1443	24X18	F	1	1
37-1444	24X21	F	1	1
37-1445	24	F	1	1
37-1446	27X4	F	1	1
37-1447	27X6	F	1	1
37-1448	27X8	F	1	1
37-1449	27X10	F	1	1
37-1450	27X12	F	1	1
37-1451	27X15	F	1	1
37-1452	27X18	F	1	1
37-1453	27X21	F	1	1
37-1454	27X24	F	1	1
37-1453	27X21	F	1	1
37-1454	27X24	F	1	1
37-1455	27	F	1	-
37-1456	30X4	F	1	1
37-1457	30X6	F	1	1
37-1458	30X8	F	1	1
37-1459	30X10	F	1	1
37-1460	30X12	F	1	1
37-1461	30X15	F	1	1
37-1462	30X18	F	1	-
37-1463	30X21	F	1	-
37-1464	30X24	F	1	-
37-1465	30X27	F	1	-
37-1466	30	F	1	-
37-1467	36X4	F	1	-
37-1468	36X6	F	1	-
37-1469	36X8	F	1	-
37-1470	36X10	F	1	-
37-1471	36X12	F	1	-
37-1472	36X15	F	1	-
37-1473	36X18	F	1	-

WYE GxGxG

PART NO.	SIZE		BOX	PALLET
37-1474	36X21	F	1	-
37-1475	36X24	F	1	-
37-1476	36X27	F	1	-
37-1477	36X30	F	1	-
37-1478	36	F	1	-

WYE SxGxG



PART NO.	SIZE		BOX	PALLET
37-1480	6X4	F	1	-
37-1482	8X4	F	1	45
37-1483	8X6	F	1	34
37-1484	8	F	1	-
37-1485	10X4	F	1	16
37-1486	10X6	F	1	14
37-1487	10X8	F	1	11
37-1488	10	F	1	8
37-1489	12X4	F	1	11
37-1490	12X6	F	1	9
37-1491	12X8	F	1	7
37-1492	12X10	F	1	6
37-1493	12	F	1	5
37-1494	15X4	F	1	6
37-1495	15X6	F	1	5
37-1496	15X8	F	1	5
37-1497	15X10	F	1	4
37-1498	15X12	F	1	4
37-1499	15	F	1	3
37-1500	18X4	F	1	4
37-1501	18X6	F	1	3
37-1502	18X8	F	1	3
37-1503	18X10	F	1	3

WYE SxGxG

PART NO.	SIZE		BOX	PALLET
37-1504	18X12	F	1	2
37-1505	18X15	F	1	2
37-1506	18	F	1	1
37-1507	21X4	F	1	2
37-1508	21X6	F	1	2
37-1509	21X8	F	1	2
37-1510	21X10	F	1	2
37-1511	21X12	F	1	2
37-1512	21X15	F	1	1
37-1513	21X18	F	1	1
37-1514	21	F	1	1
37-1515	24X4	F	1	2
37-1516	24X6	F	1	2
37-1517	24X8	F	1	1
37-1518	24X10	F	1	1
37-1519	24X12	F	1	1
37-1520	24X15	F	1	1
37-1521	24X18	F	1	1
37-1522	24X21	F	1	1
37-1523	24	F	1	1
37-1524	27X4	F	1	1
37-1525	27X6	F	1	1
37-1526	27X8	F	1	1
37-1527	27X10	F	1	1
37-1528	27X12	F	1	1
37-1529	27X15	F	1	1
37-1530	27X18	F	1	1
37-1531	27X21	F	1	1
37-1532	27X24	F	1	1
37-1533	27	F	1	-
37-1534	30X4	F	1	1
37-1535	30X6	F	1	1
37-1536	30X8	F	1	1
37-1537	30X10	F	1	1
37-1538	30X12	F	1	1
37-1539	30X15	F	1	-
37-1540	30X18	F	1	-
37-1541	30X21	F	1	-
37-1542	30X24	F	1	-
37-1543	30X27	F	1	-
37-1544	30	F	1	-
37-1545	36X4	F	1	-
37-1546	36X6	F	1	-

WYE SxGxG

PART NO.	SIZE	BOX	PALLET
37-1547	36X8	F	1 -
37-1548	36X10	F	1 -
37-1549	36X12	F	1 -
37-1550	36X15	F	1 -
37-1551	36X18	F	1 -
37-1552	36X21	F	1 -
37-1553	36X24	F	1 -
37-1554	36X27	F	1 -
37-1555	36X30	F	1 -
37-1556	36	F	1 -

DOUBLE WYE GxGxGxG



PART NO.	SIZE	BOX	PALLET
37-1557	4	F	1 -
37-1038	6X4	M	3 15
37-1039	6	M	2 12
37-1558	8X4	F	1 24
37-1559	8X6	F	1 18
37-1560	8	F	1 12
37-1561	10X4	F	1 15
37-1562	10X6	F	1 12
37-1563	10X8	F	1 9
37-1564	10	F	1 6
37-1565	12X4	F	1 11
37-1566	12X6	F	1 9
37-1567	12X8	F	1 7
37-1568	12X10	F	1 5
37-1569	12	F	1 4
37-1570	15X4	F	1 7
37-1571	15X6	F	1 6
37-1572	15X8	F	1 5
37-1573	15X10	F	1 4
37-1574	15X12	F	1 3

DOUBLE WYE GxGxGxG

PART NO.	SIZE	BOX	PALLET
37-1575	15	F	1 2
37-1576	18X4	F	1 4
37-1577	18X6	F	1 3
37-1578	18X8	F	1 3
37-1579	18X10	F	1 2
37-1580	18X12	F	1 2
37-1581	18X15	F	1 2
37-1582	18	F	1 1
37-1583	21X4	F	1 2
37-1584	21X6	F	1 2
37-1585	21X8	F	1 2
37-1586	21X10	F	1 1
37-1587	21X12	F	1 1
37-1588	21X15	F	1 1
37-1589	21X18	F	1 1
37-1590	21	F	1 1
37-1591	24X4	F	1 2
37-1592	24X6	F	1 1
37-1593	24X8	F	1 1
37-1594	24X10	F	1 1
37-1595	24X12	F	1 1
37-1596	24X15	F	1 1
37-1597	24X18	F	1 1
37-1598	24X21	F	1 1
37-1599	24	F	1 1
37-1600	27X4	F	1 1
37-1601	27X6	F	1 1
37-1602	27X8	F	1 1
37-1603	27X10	F	1 1
37-1604	27X12	F	1 1
37-1605	27X15	F	1 1
37-1606	27X18	F	1 1
37-1607	27X21	F	1 1
37-1609	27	F	1 1
37-1610	30X4	F	1 1
37-1611	30X6	F	1 1
37-1612	30X8	F	1 1
37-1613	30X10	F	1 1
37-1614	30X12	F	1 1
37-1615	30X15	F	1 -
37-1616	30X18	F	1 -
37-1617	30X21	F	1 -
37-1618	30X24	F	1 -

DOUBLE WYE GxGxGxG

PART NO.	SIZE	BOX	PALLET
37-1619	30X27	F	1 -
37-1620	30	F	1 -
37-1621	36X4	F	1 -
37-1622	36X6	F	1 -
37-1623	36X8	F	1 -
37-1624	36X10	F	1 -
37-1625	36X12	F	1 -
37-1626	36X15	F	1 -
37-1627	36X18	F	1 -
37-1628	36X21	F	1 -
37-1629	36X24	F	1 -
37-1630	36X27	F	1 -
37-1631	36X30	F	1 -
37-1632	36	F	1 -

CROSS GxGxGxG



PART NO.	SIZE	BOX	PALLET
37-1633	6X4	F	1 52
37-1634	6	F	1 33
37-1635	8X4	F	1 28
37-1636	8X6	F	1 22
37-1637	8	F	1 14
37-1638	10X4	F	1 17
37-1639	10X6	F	1 14
37-1640	10X8	F	1 11
37-1641	10	F	1 9
37-1642	12X4	F	1 13
37-1643	12X6	F	1 11
37-1644	12X8	F	1 9
37-1645	12X10	F	1 7
37-1646	12	F	1 6
37-1647	15X4	F	1 8
37-1648	15X6	F	1 7



CROSS GxGxGxG

PART NO.	SIZE		BOX	PALLET
37-1649	15X8	F	1	6
37-1650	15X10	F	1	5
37-1651	15X12	F	1	4
37-1652	15	F	1	3
37-1653	18X4	F	1	4
37-1654	18X6	F	1	4
37-1655	18X8	F	1	3
37-1656	18X10	F	1	3
37-1657	18X12	F	1	3
37-1658	18X15	F	1	2
37-1659	18	F	1	2
37-1660	21X4	F	1	-
37-1661	21X6	F	1	-
37-1662	21X8	F	1	-
37-1663	21X10	F	1	2
37-1664	21X12	F	1	2
37-1665	21X15	F	1	1
37-1666	21X18	F	1	1
37-1667	21	F	1	1
37-1668	24X4	F	1	2
37-1669	24X6	F	1	2
37-1670	24X8	F	1	1
37-1671	24X10	F	1	1
37-1672	24X12	F	1	1
37-1673	24X15	F	1	1
37-1674	24X18	F	1	1
37-1675	24X21	F	1	1
37-1676	24	F	1	1
37-1677	27X4	F	1	1
37-1678	27X6	F	1	1
37-1679	27X8	F	1	1
37-1680	27X10	F	1	1
37-1681	27X12	F	1	1
37-1682	27X15	F	1	1
37-1683	27X18	F	1	1
37-1684	27X21	F	1	1
37-1685	27X24	F	1	1
37-1686	27	F	1	-

ELBOW 90 GxG



PART NO.	SIZE		BOX	PALLET
37-1016	4	M	10	240
37-1017	6	M	1	100
37-157	8	M	1	45
37-1687	10	F	1	14
37-1688	12	F	1	8
37-1689	15	F	1	5
37-1690	18	F	1	2
37-1691	21	F	1	1
37-1692	24	F	1	1
37-1694	30	F	1	-
37-1695	36	F	1	-

ELBOW 90 GxS



PART NO.	SIZE		BOX	PALLET
37-1020	4	M	10	240
37-1021	6	M	1	100
37-176	8	M	1	45

ELBOW 90 GxS

PART NO.	SIZE		BOX	PALLET
37-1696	10	F	1	14
37-1697	12	F	1	9
37-1698	15	F	1	5
37-1699	18	F	1	2
37-1700	21	F	1	1
37-1701	24	F	1	1
37-1702	27	F	1	1
37-1703	30	F	1	-
37-1704	36	F	1	-

ELBOW 90 LONG TURN GxG



PART NO.	SIZE		BOX	PALLET
37-3490	4	M	6	-
37-3690	6	M	4	24
37-781	8	M	2	12

ELBOW 90 LONG TURN GxS



PART NO.	SIZE		BOX	PALLET
37-782	4	M	6	-
37-783	6	M	4	24

ELBOW 45 GxG



PART NO.	SIZE	BOX	PALLET
37-1012	4	M	16 384
37-153	5	F	1 -
37-1013	6	M	1 110
37-156	8	M	1 48
37-154	10	F	1 20
37-158	12	F	1 12
37-159	15	F	1 6
37-160	18	F	1 3
37-161	21	F	1 3
37-162	24	F	1 2
37-163	27	F	1 1
37-164	30	F	1 1
37-165	36	F	1 1

ELBOW 45 GxS



PART NO.	SIZE	BOX	PALLET
37-1014	4	M	16 384
37-166	5	F	1 -

ELBOW 45 GxS

PART NO.	SIZE	BOX	PALLET
37-1015	6	M	1 120
37-175	8	M	1 48
37-167	10	F	1 21
37-168	12	F	1 12
37-169	15	F	1 7
37-170	18	F	1 3
37-171	21	F	1 3
37-172	24	F	1 2
37-173	27	F	1 1
37-177	30	F	1 1
37-178	36	F	1 1

ELBOW 30 GxG



PART NO.	SIZE	BOX	PALLET
37-199	4	F	1 231
37-200	6	F	1 77
37-201	8	F	1 46
37-202	10	F	1 23
37-203	12	F	1 15
37-204	15	F	1 8
37-205	18	F	1 4
37-206	21	F	1 3
37-207	24	F	1 2
37-208	27	F	1 1
37-209	30	F	1 1
37-210	36	F	1 1

ELBOW 30 GxS



PART NO.	SIZE	BOX	PALLET
37-211	4	F	1 214
37-212	6	F	1 71
37-213	8	F	1 43
37-214	10	F	1 22
37-215	12	F	1 15
37-216	15	F	1 8
37-217	18	F	1 4
37-218	21	F	1 3
37-219	24	F	1 2
37-220	27	F	1 1
37-221	30	F	1 1
37-222	36	F	1 1

ELBOW 22.5 GxG



PART NO.	SIZE	BOX	PALLET
37-1008	4	M	18 432
37-179	5	F	1 -
37-1009	6	M	1 120
37-155	8	M	1 70
37-180	10	F	1 21



ELBOW 22.5 GxG

PART NO.	SIZE		BOX	PALLET
37-181	12	F	1	13
37-182	15	F	1	7
37-183	18	F	1	3
37-184	21	F	1	3
37-185	24	F	1	2
37-186	27	F	1	2
37-187	30	F	1	1
37-188	36	F	1	1

ELBOW 22.5 GxS



PART NO.	SIZE		BOX	PALLET
37-1010	4	M	18	432
37-189	5	F	1	-
37-1011	6	M	1	120
37-174	8	M	1	70
37-190	10	F	1	22
37-191	12	F	1	13
37-192	15	F	1	7
37-193	18	F	1	3
37-194	21	F	1	4
37-195	24	F	1	3
37-196	27	F	1	2
37-197	30	F	1	1
37-198	36	F	1	1

ELBOW 11.25 GXG



PART NO.	SIZE		BOX	PALLET
37-223	4	F	1	240
37-224	6	F	1	120
37-225	8	F	1	48
37-226	10	F	1	27
37-227	12	F	1	17
37-228	15	F	1	9
37-229	18	F	1	5
37-230	21	F	1	3
37-231	24	F	1	2
37-232	27	F	1	2
37-233	30	F	1	1
37-234	36	F	1	1

ELBOW 11.25 GxS



PART NO.	SIZE		BOX	PALLET
37-235	4	F	1	-
37-236	6	F	1	100
37-237	8	F	1	43
37-238	10	F	1	25
37-239	12	F	1	16
37-240	15	F	1	9
37-241	18	F	1	5
37-242	21	F	1	3

ELBOW 11.25 GxS

PART NO.	SIZE		BOX	PALLET
37-243	24	F	1	2
37-244	27	F	1	2
37-245	30	F	1	1
37-246	36	F	1	1

STOP COUPLING GxG



PART NO.	SIZE		BOX	PALLET
37-1005	4	M	8	-
37-1006	6	M	4	60
37-1007	8	M	4	38
37-2704	10	F	1	27
37-1705	12	F	1	18
37-1706	15	F	1	12
37-1707	18	F	1	5
37-1708	21	F	1	3
37-1709	24	F	1	2
37-1710	27	F	1	2
37-1711	30	F	1	1
37-1712	36	F	1	1

REPAIR COUPLING GxG



PART NO.	SIZE		BOX	PALLET
37-1002	4	M	8	-
37-1003	6	M	4	60
37-1004	8	M	4	38

REPAIR COUPLING GxG

PART NO.	SIZE		BOX	PALLET
37-1713	10	F	1	27
37-1714	12	F	1	18
37-1715	15	F	1	11
37-1716	18	F	1	8
37-1717	21	F	1	-
37-1718	24	F	1	-
37-1719	27	F	1	-
37-1720	30	F	1	-
37-1721	36	F	1	-

INCREASER COUPLING CONCENTRIC GxG



PART NO.	SIZE		BOX	PALLET
37-1022	6X4	M	4	-
37-55	8X4	M	4	-
37-59	8X6	M	4	-
37-1722	10X4	F	1	22
37-1723	10X6	F	1	20
37-1724	10X8	F	1	36
37-1725	12X4	F	1	15
37-1726	12X6	F	1	15
37-1727	12X8	F	1	13
37-1728	12X10	F	1	24
37-1729	15X4	F	1	10
37-1730	15X6	F	1	10
37-1731	15X8	F	1	9
37-1732	15X10	F	1	8
37-1733	15X12	F	1	17
37-1734	18X4	F	1	6
37-1735	18X6	F	1	6
37-1736	18X8	F	1	6
37-1737	18X10	F	1	5
37-1738	18X12	F	1	5

INCREASER COUPLING CONCENTRIC GxG

PART NO.	SIZE		BOX	PALLET
37-1739	18X15	F	1	4
37-1740	21X4	F	1	3
37-1741	21X6	F	1	3
37-1742	21X8	F	1	3
37-1743	21X10	F	1	3
37-1744	21X12	F	1	3
37-1745	21X15	F	1	2
37-1746	21X18	F	1	2
37-1747	24X4	F	1	2
37-1748	24X6	F	1	2
37-1749	24X8	F	1	2
37-1750	24X10	F	1	2
37-1751	24X12	F	1	2
37-1752	24X15	F	1	2
37-1753	24X18	F	1	2
37-1754	24X21	F	1	-
37-1755	27X4	F	1	2
37-1756	27X6	F	1	2
37-1757	27X8	F	1	2
37-1758	27X10	F	1	2
37-1759	27X12	F	1	1
37-1760	27X15	F	1	1
37-1761	27X18	F	1	1
37-1762	27X21	F	1	1
37-1763	27X24	F	1	-
37-1764	30X4	F	1	1
37-1765	30X6	F	1	1
37-1766	30X8	F	1	1
37-1767	30X10	F	1	1
37-1768	30X12	F	1	1
37-1769	30X15	F	1	1
37-1770	30X18	F	1	1
37-1771	30X21	F	1	1
37-1772	30X24	F	1	1
37-1773	30X27	F	1	-
37-1774	36X4	F	1	1
37-1775	36X6	F	1	1
37-1776	36X8	F	1	1
37-1777	36X10	F	1	1
37-1778	36X12	F	1	1
37-1779	36X15	F	1	1
37-1780	36X18	F	1	1

INCREASER COUPLING CONCENTRIC GxG

PART NO.	SIZE		BOX	PALLET
37-1781	36X21	F	1	1
37-1782	36X24	F	1	1
37-1783	36X27	F	1	-
37-1784	36X30	F	1	-

REDUCER BUSHING CONCENTRIC SxG



PART NO.	SIZE		BOX	PALLET
37-1785	6X4	M	5	-
37-1786	8X4	F	1	33
37-1787	8X6	F	1	29
37-1788	10X4	F	1	24
37-1789	10X6	F	1	22
37-1790	10X8	F	1	19
37-1791	12X4	F	1	17
37-1792	12X6	F	1	16
37-1793	12X8	F	1	14
37-1794	12X10	F	1	12
37-1795	15X4	F	1	11
37-1796	15X6	F	1	11
37-1797	15X8	F	1	10
37-1798	15X10	F	1	9
37-1799	15X12	F	1	8
37-1800	18X4	F	1	7
37-1801	18X6	F	1	7
37-1802	18X8	F	1	7
37-1803	18X10	F	1	6
37-1804	18X12	F	1	6
37-1805	18X15	F	1	4
37-1806	21X4	F	1	3
37-1807	21X6	F	1	3
37-1808	21X8	F	1	3



**REDUCER BUSHING
CONCENTRIC SxG**

PART NO.	SIZE		BOX	PALLET
37-1809	21X10	F	1	3
37-1810	21X12	F	1	3
37-1811	21X15	F	1	2
37-1812	21X18	F	1	2
37-1813	24X4	F	1	2
37-1814	24X6	F	1	2
37-1815	24X8	F	1	2
37-1816	24X10	F	1	2
37-1817	24X12	F	1	2
37-1818	24X15	F	1	2
37-1819	24X18	F	1	2
37-1820	24X21	F	1	-
37-1821	27X4	F	1	2
37-1822	27X6	F	1	2
37-1823	27X8	F	1	2
37-1824	27X10	F	1	2
37-1825	27X12	F	1	1
37-1826	27X15	F	1	1
37-1827	27X18	F	1	1
37-1828	27X21	F	1	1
37-1829	27X24	F	1	-
37-1830	30X4	F	1	1
37-1831	30X6	F	1	1
37-1832	30X8	F	1	1
37-1833	30X10	F	1	1
37-1834	30X12	F	1	1
37-1835	30X15	F	1	1
37-1836	30X18	F	1	1
37-1837	30X21	F	1	1
37-1838	30X24	F	1	1
37-1839	30X27	F	1	-
37-1840	36X4	F	1	1
37-1841	36X6	F	1	1
37-1842	36X8	F	1	1
37-1843	36X10	F	1	1
37-1844	36X12	F	1	1
37-1845	36X15	F	1	1
37-1846	36X18	F	1	1
37-1847	36X21	F	1	1
37-1848	36X24	F	1	1
37-1849	36X27	F	1	-
37-1850	36X30	F	1	-

**INCREASER COUPLING
ECCENTRIC GxG**



PART NO.	SIZE		BOX	PALLET
37-1851	6X4	F	12	216
37-1852	8X4	F	1	-
37-1853	8X6	F	1	-
37-1854	10X4	F	1	29
37-1855	10X6	F	1	24
37-1856	10X8	F	1	22
37-1857	12X4	F	1	19
37-1858	12X6	F	1	17
37-1859	12X8	F	1	16
37-1860	12X10	F	1	14
37-1861	15X4	F	1	12
37-1862	15X6	F	1	11
37-1863	15X8	F	1	11
37-1864	15X10	F	1	10
37-1865	15X12	F	1	9
37-1866	18X4	F	1	8
37-1867	18X6	F	1	7
37-1868	18X8	F	1	7
37-1869	18X10	F	1	7
37-1870	18X12	F	1	6
37-1871	18X15	F	1	4
37-1872	21X4	F	1	3
37-1873	12X6	F	1	3
37-1874	21X8	F	1	3
37-1875	21X10	F	1	3
37-1876	21X12	F	1	3
37-1877	21X15	F	1	2
37-1878	21X18	F	1	2
37-1879	24X4	F	1	2
37-1880	24X6	F	1	2
37-1881	24X8	F	1	2

**INCREASER COUPLING
ECCENTRIC GxG**

PART NO.	SIZE		BOX	PALLET
37-1882	24X10	F	1	2
37-1883	24X12	F	1	2
37-1884	24X15	F	1	2
37-1885	24X18	F	1	2
37-1886	24X21	F	1	-
37-1887	27X4	F	1	2
37-1888	27X6	F	1	2
37-1889	27X8	F	1	2
37-1890	27X10	F	1	2
37-1891	27X12	F	1	1
37-1892	27X15	F	1	1
37-1893	27X18	F	1	1
37-1894	27X21	F	1	1
37-1895	27X24	F	1	-
37-1896	30X4	F	1	1
37-1897	30X6	F	1	1
37-1898	30X8	F	1	1
37-1899	30X10	F	1	1
37-1900	30X12	F	1	1
37-1901	30X15	F	1	1
37-1902	30X18	F	1	1
37-1903	30X21	F	1	1
37-1904	30X24	F	1	1
37-1905	30X27	F	1	-
37-1906	36X4	F	1	1
37-1907	36X6	F	1	1
37-1908	36X8	F	1	1
37-1909	36X10	F	1	1
37-1910	36X12	F	1	1
37-1911	36X15	F	1	1
37-1912	36X18	F	1	1
37-1913	36X21	F	1	1
37-1914	36X24	F	1	1
37-1915	36X27	F	1	-
37-1916	36X30	F	1	-

**REDUCER BUSHING
ECCENTRIC SxG**



PART NO.	SIZE	BOX	PALLET
37-2003	6X4	M	16 288

TEMPORARY PLUG



PART NO.	SIZE	BOX	PALLET
37-2935	4	F	1 -
37-1936	6	F	1 -
37-1937	8	F	1 -

ADAPTER GxH



PART NO.	SIZE	BOX	PALLET
37-1972	4	M	6 -
37-1973	6	M	4 -
37-1974	8	M	4 -

CAP W/GASKET



PART NO.	SIZE	BOX	PALLET
37-1000	4	M	18 -
37-1001	6	M	8 140
37-1917	8	F	1 42
37-1918	10	F	1 23
37-1919	12	F	1 16
37-1920	15	F	1 10
37-1921	18	F	1 6
37-1922	21	F	1 3
37-1923	24	F	1 2
37-1924	27	F	1 1
37-1925	30	F	1 1
37-1926	36	F	1 1

PERMANENT PLUG



PART NO.	SIZE	BOX	PALLET
37-1040	4	M	24 1080
37-1041	6	M	15 168
37-1042	8	M	8 80
37-1927	10	F	1 26
37-1928	12	F	1 18
37-1929	15	F	1 -
37-1930	18	F	1 -
37-1931	21	F	1 3
37-1932	24	F	1 2
37-1933	27	F	1 1
37-1934	30	F	1 1
37-1935	36	F	1 1

ADAPTER SEWER x IPS GxG



PART NO.	SIZE	BOX	PALLET
37-1962	4	M	6 -
37-1963	6X4	M	4 -
37-1964	6	M	3 -
37-1965	8	F	1 -
37-1966	10	F	1 -
37-1967	12	F	1 -
37-1968	15X14	F	1 -
37-1969	15X16	F	1 -
37-1970	18	F	1 -
37-1971	21X20	F	1 -



ADAPTER GxS



PART NO.	SIZE	BOX	PALLET
37-1975	4	F	1 273
37-1976	6	F	1 125
37-1977	8	F	1 56
37-1978	10	F	1 32
37-1979	12	F	1 21
37-1980	15	F	1 12
37-1981	18	F	1 7
37-1982	21	F	1 -
37-1983	24	F	1 -
37-1984	27	F	1 -
37-1985	30	F	1 -
37-1986	36	F	1 -

**SANDED MANHOLE SLEEVE
ADAPTER NO STOP STYLE GxSLIP**



PART NO.	SIZE	BOX	PALLET
37-1938	4	F	1 -
37-1939	6	F	1 -
37-1940	8	F	1 -
37-1941	10	F	1 -
37-1942	12	F	1 -

SANDED MANHOLE SLEEVE

ADAPTER NO STOP STYLE GxSLIP

PART NO.	SIZE	BOX	PALLET
37-1943	15	F	1 23
37-1944	18	F	1 16
37-1945	21	F	1 9
37-1946	24	F	1 7
37-1947	27	F	1 5
37-1948	30	F	1 3
37-1949	36	F	1 3

**SANDED MANHOLE SLEEVE
ADAPTER STOP STYLE GxSLIP**



PART NO.	SIZE	BOX	PALLET
37-1950	4	F	1 200
37-1951	6	F	1 100
37-1952	8	F	1 50
37-1953	10	F	1 23
37-1954	12	F	1 18
37-1955	15	F	1 15
37-1956	18	F	1 10
37-1957	21	F	1 6
37-1958	24	F	1 4
37-1959	27	F	1 3
37-1960	30	F	1 2
37-1961	36	F	1 2

SDR 35

SOLVENT
WELD FITTINGS



SDR 35 SOLVENT WELD FITTINGS

Tigre USA sets the standard by offering industry leading SDR 35 Solvent Weld Fittings.

Injection molded from 3" to 8". Fabricated fittings are sourced from 10" to 36".

Part of the Water Works segment, Solvent Weld fittings are a great bridge product from sewer to plumbing.

Where gasketed fittings use a mechanical joint to join the pipe and fitting, solvent welding chemically fuses the pipe and fitting together into one.

Manufactured to ASTM Standards and NSF Certified.

Tigre USA parts are made in the USA.

SDR 35 Solvent Weld Fittings

- SDR 35 SW Molded Sewer fittings are manufactured in accordance with ASTM D-3034 and CSA B182.2.
- SDR 35 SW Molded Sewer fittings are manufactured using a virgin PVC compound with a cell classification of 12454 or 13343 in accordance with and certified by the NSF, to meet ASTM D 1784.

DO NOT USE FITTINGS FOR: Compressed air or gases.

Do not test pvc piping systems with compressed air or gases.

Do not use fittings with liquids not recommended by Tigre.

Modification of fittings voids the warranty.

Specs subject to change without notice.

NSF certified.



TEE HxHxH



PART NO.	SIZE	BOX	PALLET
36-2063	3	M	30 960
36-1083	4	M	20 240
36-1084	6X4	M	4 96
36-1085	6	M	6 72
36-1086	8X4	M	4 48
36-1087	8X6	M	2 36
36-1088	8	M	2 24
36-1000	10X4	F	1 28
36-1001	10X6	F	1 23
36-1002	10X8	F	1 20
36-1003	10	F	1 16
36-1004	12X4	F	1 18
36-1005	12X6	F	1 16
36-1006	12X8	F	1 14
36-1007	12X10	F	1 11
36-1008	12	F	1 10
36-1009	15X4	F	1 10
36-1010	15X6	F	1 9
36-1011	15X8	F	1 8
36-1012	15X10	F	1 7
36-1013	15X12	F	1 6
36-1014	15	F	1 5
36-1015	18X4	F	1 7
36-1016	18X6	F	1 6
36-1017	18X8	F	1 6
36-1018	18X10	F	1 5
36-1019	18X12	F	1 5
36-1020	18X15	F	1 4
36-1021	18	F	1 3
36-1022	21X4	F	1 4

TEE HxHxH

PART NO.	SIZE	BOX	PALLET
36-1023	21X6	F	1 4
36-1024	21X8	F	1 3
36-1025	21X10	F	1 3
36-1026	21X12	F	1 3
36-1027	21X15	F	1 3
36-1028	21X18	F	1 2
36-1029	21	F	1 2
36-1030	24X4	F	1 3
36-1031	24X6	F	1 3
36-1032	24X8	F	1 2
36-1033	24X10	F	1 2
36-1034	24X12	F	1 2
36-1035	24X15	F	1 2
36-1036	24X18	F	1 2
36-1037	24X21	F	1 2
36-1038	24	F	1 1
36-1039	27X4	F	1 2
36-1040	27X6	F	1 2
36-1041	27X8	F	1 2
36-1042	27X10	F	1 1
36-1045	27X12	F	1 1
36-1046	27X15	F	1 1
36-1047	27X18	F	1 1
36-1048	27X21	F	1 1
36-1049	27X24	F	1 1
36-1050	27	F	1 1
36-1051	30X4	F	1 1
36-1052	30X6	F	1 1
36-1053	30X8	F	1 1
36-1056	30X10	F	1 1
36-1057	30X12	F	1 1
36-1058	30X15	F	1 1
36-1059	30X18	F	1 1
36-1060	30X21	F	1 1
36-1061	30X24	F	1 1
36-1064	30X27	F	1 1
36-1065	30	F	1 1
36-1066	36X4	F	1 1
36-1067	36X6	F	1 1
36-1068	36X8	F	1 1
36-1069	36X10	F	1 1
36-1070	36X12	F	1 1
36-1071	36X15	F	1 1

TEE HxHxH

PART NO.	SIZE	BOX	PALLET
36-1072	36X18	F	1 1
36-1073	36X21	F	1 -
36-1074	36X24	F	1 -
36-1078	36X27	F	1 -
36-1079	36X30	F	1 -
36-1080	36	F	1 -

TWO WAY CLEAN OUT TEE HxHxH



PART NO.	SIZE	BOX	PALLET
36-727	4	M	10 180
36-729	6	M	3 -

CLEAN OUT TEE HxHxFIPT



PART NO.	SIZE	BOX	PALLET
36-2064	4	M	30 480

TEE SxHxH



PART NO.	SIZE	BOX	PALLET
36-1081	6X4	F	1 103
36-1082	6	F	1 79
36-1090	8X4	F	1 52
36-1091	8X6	F	1 42
36-1092	8	F	1 36
36-1093	10X4	F	1 28
36-1094	10X6	F	1 23
36-1095	10X8	F	1 20
36-1096	10	F	1 16
36-1097	12X4	F	1 18
36-1098	12X6	F	1 15
36-1099	12X8	F	1 13
36-1100	12X10	F	1 11
36-1101	12	F	1 10
36-1102	15X4	F	1 10
36-1103	15X6	F	1 9
36-1104	15X8	F	1 8
36-1105	15X10	F	1 7
36-1106	15X12	F	1 6
36-1107	15	F	1 5
36-1108	18X4	F	1 7
36-1109	18X6	F	1 6
36-1110	18X8	F	1 6
36-1111	18X10	F	1 4
36-1112	18X12	F	1 5
36-1113	18X15	F	1 4
36-1114	18	F	1 3
36-1115	21X4	F	1 4
36-1116	21X6	F	1 4
36-1117	21X8	F	1 3
36-1118	21X10	F	1 3
36-1119	21X12	F	1 2
36-1120	21X15	F	1 3
36-1121	21X18	F	1 2

TEE SxHxH

PART NO.	SIZE	BOX	PALLET
36-1122	21	F	1 2
36-1123	24X4	F	1 3
36-1124	24X6	F	1 3
36-1125	24X8	F	1 2
36-1126	24X10	F	1 2
36-1127	24X12	F	1 2
36-1128	24X15	F	1 2
36-1129	24X18	F	1 2
36-1130	24X21	F	1 2
36-1131	24	F	1 1
36-1132	27X4	F	1 2
36-1133	27X6	F	1 2
36-1134	27X8	F	1 2
36-1135	27X10	F	1 1
36-1136	27X12	F	1 1
36-1137	27X15	F	1 1
36-1138	27X18	F	1 1
36-1139	27X21	F	1 1
36-1140	27X24	F	1 1
36-1141	27	F	1 1
36-1142	30X4	F	1 1
36-1143	30X6	F	1 1
36-1144	30X8	F	1 1
36-1145	30X10	F	1 1
36-1146	30X12	F	1 1
36-1147	30X15	F	1 1
36-1148	30X18	F	1 1
36-1149	30X21	F	1 1
36-1150	30X24	F	1 1
36-1151	30X27	F	1 1
36-1152	30	F	1 1
36-1153	36X4	F	1 1
36-1154	36X6	F	1 1
36-1155	36X8	F	1 1
36-1156	36X10	F	1 1
36-1157	36X12	F	1 1
36-1158	36X15	F	1 1
36-1159	36X18	F	1 1
36-1160	36X21	F	1 -
36-1161	36X24	F	1 -
36-1162	36X27	F	1 -
36-1163	36X30	F	1 -
36-1164	36	F	1 -

SADDLE TEE W/SS STRAP



PART NO.	SIZE	BOX	PALLET
36-709	6X4	M	6 -
36-710	8X4	M	6 -
36-711	8X6	M	4 -

SADDLE WYE W/SS STRAPS



PART NO.	SIZE	BOX	PALLET
36-712	6X4	M	6 -
36-713	8X4	M	6 -
36-714	8X6	M	4 -

TEE WYE HxHxH



PART NO.	SIZE	BOX	PALLET
36-2066	3	M	24 768
36-721	4	M	18 216
36-722	6X4	M	5 -
36-723	6	M	6 96
36-724	8X4	M	4 30
36-725	8X6	M	2 -



TEE WYE HxHxH

PART NO.	SIZE		BOX	PALLET
36-726	8	M	2	-
36-1165	10X4	F	1	24
36-1166	10X6	F	1	17
36-1167	10X8	F	1	15
36-1168	10	F	1	9
36-1169	12X4	F	1	16
36-1170	12X6	F	1	14
36-1171	12X8	F	1	11
36-1172	12X10	F	1	7
36-1173	12	F	1	5
36-1174	15X4	F	1	9
36-1175	15X6	F	1	8
36-1176	15X8	F	1	7
36-1177	15X10	F	1	5
36-1178	15X12	F	1	4
36-1179	15	F	1	3
36-1180	18X4	F	1	6
36-1181	18X6	F	1	5
36-1182	18X8	F	1	5
36-1183	18X10	F	1	3
36-1184	18X12	F	1	3
36-1185	18X15	F	1	2
36-1186	18	F	1	2
36-1187	21X4	F	1	4
36-1188	21X6	F	1	4
36-1189	21X8	F	1	3
36-1190	21X10	F	1	2
36-1191	21X12	F	1	2
36-1192	21X15	F	1	2
36-1193	21X18	F	1	1
36-1194	21	F	1	1
36-1195	24X4	F	1	3
36-1196	24X6	F	1	2
36-1197	24X8	F	1	2
36-1198	24X10	F	1	2
36-1199	24X12	F	1	2
36-1200	24X15	F	1	1
36-1201	24X18	F	1	1
36-1202	24X21	F	1	1
36-1203	24	F	1	1
36-1204	27X4	F	1	-
36-1205	27X6	F	1	-
36-1206	27X8	F	1	-

TEE WYE HxHxH

PART NO.	SIZE		BOX	PALLET
36-1207	27X10	F	1	1
36-1208	27X12	F	1	1
36-1209	27X15	F	1	1
36-1210	27X18	F	1	1
36-1211	27X21	F	1	1
36-1212	27X24	F	1	1
36-1213	27	F	1	-
36-1214	30X4	F	1	-
36-1215	30X6	F	1	-
36-1216	30X8	F	1	-
36-1217	30X10	F	1	1
36-1218	30X12	F	1	1
36-1219	30X15	F	1	1
36-1220	30X18	F	1	1
36-1221	30X21	F	1	1
36-1222	30X24	F	1	-
36-1223	30X27	F	1	-
36-1224	30	F	1	-
36-1225	36X4	F	1	-
36-1226	36X6	F	1	-
36-1227	36X8	F	1	-
36-1228	36X10	F	1	1
36-1229	36X12	F	1	1
36-1230	36X15	F	1	-
36-1231	36X18	F	1	-
36-1232	36X21	F	1	-
36-1233	36X24	F	1	-
36-1234	36X27	F	1	-
36-1235	36X30	F	1	-
36-1236	36	F	1	-

TEE WYE SxHxH



PART NO.	SIZE		BOX	PALLET
36-1237	8	F	1	22

TEE WYE SxHxH

PART NO.	SIZE		BOX	PALLET
36-1238	10X4	F	1	24
36-1239	10X6	F	1	17
36-1240	10X8	F	1	15
36-1241	10	F	1	9
36-1242	12X4	F	1	16
36-1243	12X6	F	1	14
36-1244	12X8	F	1	11
36-1245	12X10	F	1	7
36-1246	12	F	1	5
36-1247	15X4	F	1	9
36-1248	15X6	F	1	8
36-1249	15X8	F	1	7
36-1250	15X10	F	1	5
36-1251	15X12	F	1	4
36-1252	15	F	1	3
36-1253	18X4	F	1	6
36-1254	18X6	F	1	5
36-1255	18X8	F	1	5
36-1256	18X10	F	1	3
36-1257	18X12	F	1	3
36-1258	18X15	F	1	2
36-1259	18	F	1	2
36-1260	21X4	F	1	4
36-1261	21X6	F	1	4
36-1262	21X8	F	1	3
36-1263	21X10	F	1	3
36-1264	21X12	F	1	2
36-1265	21X15	F	1	2
36-1266	21X18	F	1	1
36-1267	21	F	1	1
36-1268	24X4	F	1	-
36-1269	24X6	F	1	-
36-1270	24X8	F	1	-
36-1271	24X10	F	1	2
36-1272	24X12	F	1	2
36-1273	24X15	F	1	1
36-1274	24X18	F	1	1
36-1275	24X21	F	1	1
36-1276	24	F	1	1
36-1277	27X4	F	1	-
36-1278	27X6	F	1	-
36-1279	27X8	F	1	-
36-1280	27X10	F	1	1

TEE WYE SxHxH

PART NO.	SIZE		BOX	PALLET
36-1281	27X12	F	1	1
36-1282	27X15	F	1	1
36-1283	27X18	F	1	1
36-1284	27X21	F	1	1
36-1285	27X24	F	1	1
36-1286	27	F	1	-
36-1287	30X4	F	1	-
36-1288	30X6	F	1	-
36-1289	30X8	F	1	-
36-1290	30X10	F	1	1
36-1291	30X12	F	1	1
36-1292	30X15	F	1	1
36-1293	30X18	F	1	1
36-1294	30X21	F	1	1
36-1295	30X24	F	1	-
36-1296	30X27	F	1	-
36-1297	30	F	1	-
36-1298	36X4	F	1	-
36-1299	36X6	F	1	-
36-1300	36X8	F	1	-
36-1301	36X10	F	1	1
36-1302	36X12	F	1	1
36-1303	36X15	F	1	-
36-1304	36X18	F	1	-
36-1305	36X21	F	1	-
36-1306	36X24	F	1	-
36-1307	36X27	F	1	-
36-1308	36X30	F	1	-
36-1309	36	F	1	-

DOUBLE TEE WYE HxHxHxH



PART NO.	SIZE		BOX	PALLET
36-1310	6X4	F	1	-
36-1311	6	F	1	-

DOUBLE TEE WYE HxHxHxH

PART NO.	SIZE		BOX	PALLET
36-1312	8X4	F	1	-
36-1313	8X6	F	1	-
36-1314	8	F	1	-
36-1315	10X4	F	1	-
36-1316	10X6	F	1	-
36-1317	10X8	F	1	-
36-1318	10	F	1	6
36-1319	12X4	F	1	-
36-1320	12X6	F	1	-
36-1321	12X8	F	1	-
36-1322	12X10	F	1	5
36-1323	12	F	1	4
36-1324	15X4	F	1	-
36-1325	15X6	F	1	-
36-1326	15X8	F	1	-
36-1327	15X10	F	1	4
36-1328	15X12	F	1	3
36-1329	15	F	1	2
36-1330	18X4	F	1	-
36-1331	18X6	F	1	-
36-1332	18X8	F	1	-
36-1333	18X10	F	1	3
36-1334	18X12	F	1	2
36-1335	18X15	F	1	2
36-1336	18	F	1	1
36-1337	21X4	F	1	-
36-1338	21X6	F	1	-
36-1339	21X8	F	1	-
36-1340	21X10	F	1	2
36-1341	21X12	F	1	2
36-1342	21X15	F	1	1
36-1343	21X18	F	1	1
36-1344	21	F	1	1
36-1345	24X4	F	1	-
36-1346	24X6	F	1	-
36-1347	24X8	F	1	-
36-1348	24X10	F	1	2
36-1349	24X12	F	1	1
36-1350	24X15	F	1	1
36-1351	24X18	F	1	1
36-1352	24X21	F	1	1
36-1353	24	F	1	-
36-1354	27X4	F	1	-

DOUBLE TEE WYE HxHxHxH

PART NO.	SIZE		BOX	PALLET
36-1355	27X6	F	1	-
36-1356	27X8	F	1	-
36-1357	27X10	F	1	1
36-1358	27X12	F	1	1
36-1359	27X15	F	1	1
36-1360	27X18	F	1	1
36-1361	27X21	F	1	-
36-1362	27X24	F	1	-
36-1363	27	F	1	-
36-1364	30X4	F	1	-
36-1365	30X6	F	1	-
36-1366	30X8	F	1	-
36-1367	30X10	F	1	1
36-1368	30X12	F	1	1
36-1369	30X15	F	1	1
36-1370	30X18	F	1	1
36-1371	30X21	F	1	-
36-1372	30X24	F	1	-
36-1373	30X27	F	1	-
36-1374	30	F	1	-
36-1375	36X4	F	1	-
36-1376	36X6	F	1	-
36-1377	36X8	F	1	-
36-1378	36X10	F	1	1
36-1379	36X12	F	1	1
36-1380	36X15	F	1	-
36-1381	36X18	F	1	-
36-1382	36X21	F	1	-
36-1383	36X24	F	1	-
36-1384	36X27	F	1	-
36-1385	36X30	F	1	-
36-1386	36	F	1	-



WYE HxHxH



PART NO.	SIZE	BOX	PALLET	
36-2065	3	M	25	1125
36-730	4	M	16	192
36-731	6X4	M	7	84
36-732	6	M	4	48
36-733	8X4	M	3	36
36-734	8X6	M	2	24
36-735	8	M	2	-
36-1441	10X4	F	1	28
36-1442	10X6	F	1	22
36-1443	10X8	F	1	18
36-1444	10	F	1	13
36-1445	12X4	F	1	18
36-1446	12X6	F	1	15
36-1447	12X8	F	1	12
36-1448	12X10	F	1	10
36-1449	12	F	1	7
36-1450	15X4	F	1	10
36-1451	15X6	F	1	9
36-1452	15X8	F	1	8
36-1453	15X10	F	1	7
36-1454	15X12	F	1	6
36-1455	15	F	1	4
36-1456	18X4	F	1	7
36-1457	18X6	F	1	6
36-1458	18X8	F	1	6
36-1459	18X10	F	1	5
36-1460	18X12	F	1	4
36-1461	18X15	F	1	4
36-1462	18	F	1	2
36-1463	21X4	F	1	4
36-1464	21X6	F	1	4
36-1465	21X8	F	1	3
36-1466	21X10	F	1	3
36-1467	21X12	F	1	3
36-1468	21X15	F	1	2

WYE HxHxH

PART NO.	SIZE	BOX	PALLET	
36-1469	21X18	F	1	2
36-1470	21	F	1	1
36-1471	24X4	F	1	3
36-1472	24X6	F	1	2
36-1473	24X8	F	1	2
36-1474	24X10	F	1	2
36-1475	24X12	F	1	2
36-1476	24X15	F	1	2
36-1477	24X18	F	1	1
36-1478	24X21	F	1	1
36-1479	24	F	1	1
36-1480	27X4	F	1	2
36-1481	27X6	F	1	2
36-1482	27X8	F	1	1
36-1483	27X10	F	1	1
36-1484	27X12	F	1	1
36-1485	27X15	F	1	1
36-1486	27X18	F	1	1
36-1487	27X21	F	1	1
36-1488	27X24	F	1	1
36-1489	27	F	1	1
36-1490	30X4	F	1	1
36-1491	30X6	F	1	1
36-1492	30X8	F	1	1
36-1493	30X10	F	1	1
36-1494	30X12	F	1	1
36-1495	30X15	F	1	1
36-1496	30X18	F	1	1
36-1497	30X21	F	1	1
36-1498	30X24	F	1	1
36-1499	30X27	F	1	-
36-1500	30	F	1	-
36-1501	36X4	F	1	1
36-1502	36X6	F	1	1
36-1503	36X8	F	1	1
36-1504	36X10	F	1	1
36-1505	36X12	F	1	1
36-1506	36X15	F	1	-
36-1507	36X18	F	1	-
36-1508	36X21	F	1	-
36-1509	36X24	F	1	-
36-1510	36X27	F	1	-
36-1511	36X30	F	1	-

WYE HxHxH

PART NO.	SIZE	BOX	PALLET	
36-1512	36	F	1	-

WYE SxHxH



PART NO.	SIZE	BOX	PALLET	
36-1513	4	F	16	-
36-327	6	M	4	48
36-1514	8	F	1	24
36-1515	10X4	F	1	28
36-1516	10X6	F	1	22
36-1517	10X8	F	1	18
36-1518	10	F	1	13
36-1519	12X4	F	1	18
36-1520	12X6	F	1	15
36-1521	12X8	F	1	12
36-1522	12X10	F	1	10
36-1523	12	F	1	7
36-1524	15X4	F	1	10
36-1525	15X6	F	1	9
36-1526	15X8	F	1	8
36-1527	15X10	F	1	7
36-1528	15X12	F	1	6
36-1529	15	F	1	4
36-1530	18X4	F	1	7
36-1531	18X6	F	1	6
36-1532	18X8	F	1	6
36-1533	18X10	F	1	5
36-1534	18X12	F	1	4
36-1535	18X15	F	1	4
36-1536	18	F	1	2
36-1537	21X4	F	1	4
36-1538	21X6	F	1	4
36-1539	21X8	F	1	3

WYE SxHxH

PART NO.	SIZE		BOX	PALLET
36-1540	21X10	F	1	3
36-1541	21X12	F	1	3
36-1542	21X15	F	1	2
36-1543	21X18	F	1	2
36-1544	21	F	1	1
36-1545	24X4	F	1	3
36-1546	24X6	F	1	2
36-1547	24X8	F	1	2
36-1548	24X10	F	1	2
36-1549	24X12	F	1	2
36-1550	24X15	F	1	2
36-1551	24X18	F	1	1
36-1552	24X21	F	1	1
36-1553	24	F	1	1
36-1556	27X4	F	1	2
36-1557	27X6	F	1	2
36-1558	27X8	F	1	1
36-1559	27X10	F	1	1
36-1560	27X12	F	1	1
36-1561	27X15	F	1	1
36-1562	27X18	F	1	1
36-1563	27X21	F	1	1
36-1564	27X24	F	1	1
36-1565	27	F	1	1
36-1566	30X4	F	1	1
36-1567	30X6	F	1	1
36-1568	30X8	F	1	1
36-1569	30X10	F	1	1
36-1570	30X12	F	1	1
36-1571	30X15	F	1	1
36-1572	30X18	F	1	1
36-1573	30X21	F	1	1
36-1574	30X24	F	1	1
36-1575	30X27	F	1	-
36-1576	30	F	1	-
36-1577	36X4	F	1	1
36-1578	36X6	F	1	1
36-1579	36X8	F	1	1
36-1580	36X10	F	1	1
36-1581	36X12	F	1	1
36-1582	36X15	F	1	-
36-1583	36X18	F	1	-
36-1584	36X21	F	1	-

WYE SxHxH

PART NO.	SIZE		BOX	PALLET
36-1585	36X24	F	1	-
36-1586	36X27	F	1	-
36-1587	36X30	F	1	-
36-1588	36	F	1	-

DOUBLE WYE HxHxHxH



PART NO.	SIZE		BOX	PALLET
36-1589	4	F	1	-
36-736	6X4	M	3	54
36-737	6	M	3	54
36-1054	8X4	M	1	-
36-1055	8X6	M	1	-
36-1590	8	F	1	18
36-1591	10X4	F	1	26
36-1592	10X6	F	1	20
36-1593	10X8	F	1	14
36-1594	10	F	1	10
36-1595	12X4	F	1	17
36-1596	12X6	F	1	14
36-1597	12X8	F	1	11
36-1598	12X10	F	1	8
36-1599	12	F	1	6
36-1600	15X4	F	1	10
36-1601	15X6	F	1	9
36-1602	15X8	F	1	7
36-1603	15X10	F	1	6
36-1604	15X12	F	1	5
36-1605	15	F	1	3
36-1606	18X4	F	1	7
36-1607	18X6	F	1	6
36-1608	18X8	F	1	5
36-1609	18X10	F	1	3
36-1610	18X12	F	1	3

DOUBLE WYE HxHxHxH

PART NO.	SIZE		BOX	PALLET
36-1611	18X15	F	1	2
36-1612	18	F	1	2
36-1613	21X4	F	1	3
36-1614	21X6	F	1	3
36-1615	21X8	F	1	3
36-1616	21X10	F	1	2
36-1617	21X12	F	1	2
36-1618	21X15	F	1	2
36-1619	21X18	F	1	1
36-1620	21	F	1	1
36-1621	24X4	F	1	2
36-1622	24X6	F	1	2
36-1623	24X8	F	1	2
36-1624	24X10	F	1	2
36-1625	24X12	F	1	2
36-1626	24X15	F	1	1
36-1627	24X18	F	1	1
36-1628	24X21	F	1	1
36-1629	24	F	1	1
36-1630	27X4	F	1	2
36-1631	27X6	F	1	2
36-1632	27X8	F	1	1
36-1633	27X10	F	1	1
36-1634	27X12	F	1	1
36-1635	27X15	F	1	1
36-1636	27X18	F	1	1
36-1637	27X21	F	1	1
36-1638	27X24	F	1	1
36-1639	27	F	1	-
36-1640	30X4	F	1	1
36-1641	30X6	F	1	1
36-1642	30X8	F	1	1
36-1643	30X10	F	1	1
36-1644	30X12	F	1	1
36-1645	30X15	F	1	1
36-1646	30X18	F	1	1
36-1647	30X21	F	1	1
36-1648	30X24	F	1	-
36-1649	30X27	F	1	-
36-1650	30	F	1	-
36-1651	36X4	F	1	1
36-1652	36X6	F	1	1
36-1653	36X8	F	1	1



DOUBLE WYE HxHxHxH

PART NO.	SIZE		BOX	PALLET
36-1654	36X10	F	1	1
36-1655	36X12	F	1	1
36-1656	36X15	F	1	-
36-1657	36X18	F	1	-
36-1658	36X21	F	1	-
36-1659	36X24	F	1	-
36-1660	36X27	F	1	-
36-1661	36X30	F	1	-
36-1662	36	F	1	-

DOUBLE WYE SxHxHxH



PART NO.	SIZE		BOX	PALLET
36-1554	8X4	F	1	30
36-1555	8X6	F	1	25

CROSS HxHxHxH



PART NO.	SIZE		BOX	PALLET
36-715	4	M	12	216
36-1387	6X4	F	1	92
36-1388	6	F	1	73
36-1389	8X4	F	1	49
36-1390	8X6	F	1	36
36-1391	8	F	1	26

CROSS HxHxHxH

PART NO.	SIZE		BOX	PALLET
36-1392	10X4	F	1	28
36-1393	10X6	F	1	22
36-1394	10X8	F	1	17
36-1395	10	F	1	13
36-1396	12X4	F	1	15
36-1397	12X6	F	1	15
36-1398	12X8	F	1	12
36-1399	12X10	F	1	8
36-1400	12	F	1	6
36-1401	15X4	F	1	10
36-1402	15X6	F	1	9
36-1403	15X8	F	1	7
36-1404	15X10	F	1	6
36-1405	15X12	F	1	5
36-1406	15	F	1	3
36-1407	18X4	F	1	7
36-1408	18X6	F	1	6
36-1409	18X8	F	1	5
36-1410	18X10	F	1	4
36-1411	18X12	F	1	4
36-1412	18X15	F	1	3
36-1413	18	F	1	2
36-1414	21X4	F	1	3
36-1415	21X6	F	1	3
36-1416	21X8	F	1	3
36-1417	21X10	F	1	3
36-1418	21X12	F	1	2
36-1419	21X15	F	1	2
36-1420	21X18	F	1	2
36-1421	21	F	1	1
36-1422	24X4	F	1	2
36-1423	24X6	F	1	2
36-1424	24X8	F	1	2
36-1425	24X10	F	1	2
36-1426	24X12	F	1	2
36-1427	24X15	F	1	1
36-1428	24X18	F	1	1
36-1429	24X21	F	1	1
36-1430	24	F	1	1
36-1431	27X4	F	1	2
36-1432	27X6	F	1	2
36-1433	27X8	F	1	2
36-1434	27X10	F	1	1

CROSS HxHxHxH

PART NO.	SIZE		BOX	PALLET
36-1435	27X12	F	1	1
36-1436	27X15	F	1	1
36-1437	27X18	F	1	1
36-1438	27X21	F	1	1
36-1439	27X24	F	1	1
36-1440	27	F	1	1

ELBOW 90 HxH



PART NO.	SIZE		BOX	PALLET
36-6555	4	M	24	288
36-6560	6	M	8	96
36-685	8	M	4	48
36-1663	10	F	1	20
36-1664	12	F	1	12
36-1665	15	F	1	6
36-1666	18	F	1	3
36-1667	21	F	1	2
36-1668	24	F	1	1
36-1669	27	F	1	1
36-1670	30	F	1	-
36-1671	36	F	1	-

ELBOW 90 HxS



PART NO.	SIZE		BOX	PALLET
36-2060	3	M	25	1000

ELBOW 90 HxS

PART NO.	SIZE		BOX	PALLET
36-2062	4	M	25	1125
36-742	6	M	8	96
36-743	8	M	4	48
36-1673	10	F	1	20
36-1674	12	F	1	12
36-1675	15	F	1	6
36-1676	18	F	1	3
36-1677	21	F	1	2
36-1678	24	F	1	1
36-1679	27	F	1	1
36-1680	30	F	1	-
36-1681	36	F	1	-

ELBOW 90 LONG TURN HxH



PART NO.	SIZE		BOX	PALLET
36-255	3	M	25	800
36-677	4	M	16	288
36-678	6	M	8	128
36-679	8	M	2	-

ELBOW 90 LONG TURN HxS



PART NO.	SIZE		BOX	PALLET
36-2061	3	M	25	800
36-680	4	M	16	288

ELBOW 90 LONG TURN HxS

PART NO.	SIZE		BOX	PALLET
36-681	6	M	8	128
36-682	8	M	2	-

ELBOW 45 HxH



PART NO.	SIZE		BOX	PALLET
36-502	3	M	30	1200
36-671	4	M	30	360
36-672	6	M	12	144
36-673	8	M	4	-
36-1683	10	F	1	28
36-1684	12	F	1	16
36-1685	15	F	1	9
36-1686	18	F	1	4
36-1687	21	F	1	3
36-1688	24	F	1	2
36-1689	27	F	1	1
36-1690	30	F	1	1
36-1691	36	F	1	1

ELBOW 45 HxS



PART NO.	SIZE		BOX	PALLET
36-1692	3	M	30	1200
36-674	4	M	30	360

ELBOW 45 HxS

PART NO.	SIZE		BOX	PALLET
36-675	6	M	12	144
36-676	8	M	4	-
36-1693	10	F	1	28
36-1694	12	F	1	16
36-1695	15	F	1	9
36-1696	18	F	1	4
36-1697	21	F	1	3
36-1698	24	F	1	2
36-1699	27	F	1	1
36-1700	30	F	1	1
36-1701	36	F	1	1

ELBOW 30 HxH



PART NO.	SIZE		BOX	PALLET
36-1722	4	F	1	300
36-1723	6	F	1	150
36-1724	8	F	1	60
36-1725	10	F	1	30
36-1726	12	F	1	19
36-1727	15	F	1	10
36-1728	18	F	1	5
36-1729	21	F	1	3
36-1730	24	F	1	2
36-1731	27	F	1	2
36-1732	30	F	1	1
36-1733	36	F	1	1



ELBOW 30 HxS



PART NO.	SIZE	BOX	PALLET
36-1734	4	F	1 300
36-1735	6	F	1 150
36-1736	8	F	1 60
36-1737	10	F	1 30
36-1738	12	F	1 19
36-1739	15	F	1 10
36-1740	18	F	1 5
36-1741	21	F	1 3
36-1742	24	F	1 2
36-1743	27	F	1 2
36-1744	30	F	1 1
36-1745	36	F	1 1

ELBOW 22.5 HxH



PART NO.	SIZE	BOX	PALLET
36-1702	3	M	25 1800
36-668	4	M	48 576
36-669	6	M	10 180
36-670	8	M	4 -
36-1703	10	F	1 31
36-1704	12	F	1 20
36-1705	15	F	1 10
36-1706	18	F	1 5
36-1707	21	F	1 3

ELBOW 22.5 HxS



PART NO.	SIZE	BOX	PALLET
36-1712	3	M	25 1800
36-1043	4	M	22 528
36-1044	6	M	12 144
36-1075	8	M	4 -
36-1713	10	F	1 31
36-1714	12	F	1 20
36-1715	15	F	1 10
36-1716	18	F	1 5
36-1717	21	F	1 3
36-1718	24	F	1 2
36-1719	27	F	1 1
36-1720	30	F	1 1
36-1721	36	F	1 1

ELBOW 11.25 HxH



PART NO.	SIZE	BOX	PALLET
36-1746	4	F	1 300

ELBOW 11.25 HxS

PART NO.	SIZE	BOX	PALLET
36-1747	6	F	1 150
36-1748	8	F	1 75
36-1749	10	F	1 38
36-1750	12	F	1 23
36-1751	15	F	1 12
36-1752	18	F	1 6
36-1753	21	F	1 4
36-1754	24	F	1 3
36-1755	27	F	1 2
36-1756	30	F	1 1
36-1757	36	F	1 1

ELBOW 11.25 HxS



PART NO.	SIZE	BOX	PALLET
36-1758	4	F	1 300
36-1759	6	F	1 150
36-1760	8	F	1 75
36-1761	10	F	1 38
36-1762	12	F	1 23
36-1763	15	F	1 12
36-1764	18	F	1 6
36-1765	21	F	1 4
36-1766	24	F	1 3
36-1767	27	F	1 2
36-1768	30	F	1 1
36-1769	36	F	1 1

**INCREASER COUPLING
CONCENTRIC HxH**



PART NO.	SIZE	BOX	PALLET
36-1780	3X2	M	25 -
36-1076	3X4	M	40 1600
36-1781	4X2	F	1 -
36-700	4X6	M	24 1080
36-701	4X8	M	8 84
36-702	6X8	M	10 -
36-1782	10X4	F	1 100
36-1783	10X6	F	1 100
36-1784	10X8	F	1 60
36-1785	12X4	F	1 75
36-1786	12X6	F	1 60
36-1787	12X8	F	1 50
36-1788	12X10	F	1 38
36-1789	15X4	F	1 60
36-1790	15X6	F	1 50
36-1791	15X8	F	1 38
36-1792	15X10	F	1 25
36-1793	15X12	F	1 20
36-1794	18X4	F	1 25
36-1795	18X6	F	1 23
36-1796	18X8	F	1 20
36-1797	18X10	F	1 18
36-1798	18X12	F	1 14
36-1799	18X15	F	1 10
36-1800	21X4	F	1 9
36-1801	21X6	F	1 9
36-1802	21X8	F	1 8
36-1803	21X10	F	1 8
36-1804	21X12	F	1 7
36-1805	21X15	F	1 8
36-1806	21X18	F	1 6
36-1807	24X4	F	1 8
36-1808	24X6	F	1 8
36-1809	24X8	F	1 8

**INCREASER COUPLING
CONCENTRIC HxH**

PART NO.	SIZE	BOX	PALLET
36-1810	24X10	F	1 7
36-1811	24X12	F	1 7
36-1812	24X15	F	1 6
36-1813	24X18	F	1 5
36-1814	24X21	F	1 4
36-1815	27X4	F	1 4
36-1816	27X6	F	1 4
36-1817	27X8	F	1 4
36-1818	27X10	F	1 4
36-1819	27X12	F	1 4
36-1820	27X15	F	1 4
36-1821	27X18	F	1 3
36-1822	27X21	F	1 3
36-1823	27X24	F	1 3
36-1824	30X4	F	1 3
36-1825	30X6	F	1 3
36-1826	30X8	F	1 3
36-1827	30X10	F	1 3
36-1828	30X12	F	1 3
36-1829	30X15	F	1 3
36-1830	30X18	F	1 3
36-1831	30X21	F	1 2
36-1832	30X24	F	1 2
36-1833	30X27	F	1 2
36-1834	36X4	F	1 2
36-1835	36X6	F	1 2
36-1836	36X8	F	1 2
36-1837	36X10	F	1 2
36-1838	36X12	F	1 2
36-1839	36X15	F	1 2
36-1840	36X18	F	1 2
36-1841	36X21	F	1 2
36-1842	36X24	F	1 1
36-1843	36X27	F	1 1
36-1844	36X30	F	1 1

**REDUCER BUSHING
CONCENTRIC SxH**



PART NO.	SIZE	BOX	PALLET
36-1845	3X2	M	15 -
36-1846	4X2	F	8 -
36-1077	4X3	M	25 1800
36-706	6X4	M	24 1080
36-707	8X4	M	8 -
36-708	8X6	M	9 -
36-1847	10X4	F	1 30
36-1848	10X6	F	1 33
36-1849	10X8	F	1 27
36-1850	12X4	F	1 20
36-1851	12X6	F	1 20
36-1852	12X8	F	1 19
36-1853	12X10	F	1 17
36-1854	15X4	F	1 12
36-1855	15X6	F	1 12
36-1856	15X8	F	1 11
36-1857	15X10	F	1 10
36-1858	15X12	F	1 9
36-1859	18X4	F	1 6
36-1860	18X6	F	1 6
36-1861	18X8	F	1 6
36-1862	18X10	F	1 6
36-1863	18X12	F	1 5
36-1864	18X15	F	1 5
36-1865	21X4	F	1 3
36-1866	21X6	F	1 3
36-1867	21X8	F	1 3
36-1868	21X10	F	1 3
36-1869	21X12	F	1 3
36-1870	21X15	F	1 3
36-1871	21X18	F	1 3
36-1872	24X4	F	1 3
36-1873	24X6	F	1 3
36-1874	24X8	F	1 2



**REDUCER BUSHING
CONCENTRIC SxH**

PART NO.	SIZE	BOX	PALLET	
36-1875	24X10	F	1	2
36-1876	24X12	F	1	2
36-1877	24X15	F	1	2
36-1878	24X18	F	1	2
36-1879	24X21	F	1	2
36-1880	27X4	F	1	2
36-1881	27X6	F	1	2
36-1882	27X8	F	1	2
36-1883	27X10	F	1	2
36-1884	27X12	F	1	2
36-1885	27X15	F	1	1
36-1886	27X18	F	1	1
36-1887	27X21	F	1	1
36-1888	27X24	F	1	1
36-1889	30X4	F	1	1
36-1890	30X6	F	1	1
36-1891	30X8	F	1	1
36-1892	30X10	F	1	1
36-1893	30X12	F	1	1
36-1894	30X15	F	1	1
36-1895	30X18	F	1	1
36-1896	30X21	F	1	1
36-1897	30X24	F	1	1
36-1898	30X27	F	1	1
36-1899	36X4	F	1	1
36-1900	36X6	F	1	1
36-1901	36X8	F	1	1
36-1902	36X10	F	1	1
36-1903	36X12	F	1	1
36-1904	36X15	F	1	1
36-1905	36X18	F	1	1
36-1906	36X21	F	1	1
36-1907	36X24	F	1	1
36-1908	36X27	F	1	1
36-1909	36X30	F	1	1

ADAPTER SPGxDWV H



PART NO.	SIZE	BOX	PALLET	
36-2056	3X1-1/2	M	25	2400
36-656	4	M	36	864
36-6551	4X1-1/2	M	25	1800
36-6552	4X2	M	25	1800
36-655	4X3	M	15	-
36-658	6	M	25	300
36-657	6X4	M	12	480

**INCREASER COUPLING
ECCENTRIC HxH**



PART NO.	SIZE	BOX	PALLET	
36-1910	6X4	F	1	150
36-1911	8X4	F	1	100
36-1912	8X6	F	1	60
36-1913	10X4	F	1	100
36-1914	10X6	F	1	75
36-1915	10X8	F	1	30
36-1916	12X4	F	1	75
36-1917	12X6	F	1	60
36-1918	12X8	F	1	43
36-1919	12X10	F	1	17
36-1920	15X4	F	1	60
36-1921	15X6	F	1	50

**INCREASER COUPLING
ECCENTRIC HxH**

PART NO.	SIZE	BOX	PALLET	
36-1922	15X8	F	1	38
36-1923	15X10	F	1	30
36-1924	15X12	F	1	10
36-1925	18X4	F	1	25
36-1926	18X6	F	1	23
36-1927	18X8	F	1	20
36-1928	18X10	F	1	18
36-1929	18X12	F	1	15
36-1930	18X15	F	1	12
36-1931	21X4	F	1	9
36-1932	21X6	F	1	9
36-1933	21X8	F	1	8
36-1934	21X10	F	1	8
36-1935	21X12	F	1	7
36-1936	21X15	F	1	6
36-1937	21X18	F	1	5
36-1938	24X4	F	1	8
36-1939	24X6	F	1	8
36-1940	24X8	F	1	8
36-1941	24X10	F	1	7
36-1942	24X12	F	1	7
36-1943	24X15	F	1	6
36-1944	24X18	F	1	5
36-1945	24X21	F	1	4
36-1946	27X4	F	1	4
36-1947	27X6	F	1	4
36-1948	27X8	F	1	4
36-1949	27X10	F	1	4
36-1950	27X12	F	1	4
36-1951	27X15	F	1	4
36-1952	27X18	F	1	3
36-1953	27X21	F	1	3
36-1954	27X24	F	1	2
36-1955	30X4	F	1	3
36-1956	30X6	F	1	3
36-1957	30X8	F	1	3
36-1958	30X10	F	1	3
36-1959	30X12	F	1	3
36-1960	30X15	F	1	3
36-1961	30X18	F	1	3
36-1962	30X21	F	1	2
36-1963	30X24	F	1	2

INCREASER COUPLING ECCENTRIC HxH

PART NO.	SIZE	BOX	PALLET
36-1964	30X27	F	1 2
36-1965	36X4	F	1 2
36-1966	36X6	F	1 2
36-1967	36X8	F	1 2
36-1968	36X10	F	1 2
36-1969	36X12	F	1 2
36-1970	36X15	F	1 2
36-1971	36X18	F	1 2
36-1972	36X21	F	1 2
36-1973	36X24	F	1 1
36-1974	36X27	F	1 1
36-1975	36X30	F	1 1

REDUCER BUSHING ECCENTRIC SxH



PART NO.	SIZE	BOX	PALLET
36-812	6X4	M	20 360
36-813	8X4	M	8 96
36-814	8X6	M	8 96

FITTING CLEANOUT SxFIPT



PART NO.	SIZE	BOX	PALLET
36-1976	3	F	1 600
36-6570	4	M	24 768

FITTING CLEANOUT SxFIPT

PART NO.	SIZE	BOX	PALLET
36-642	6	M	20 360
36-643	8	M	8 -
36-1977	10	F	1 60
36-1978	12	F	1 33
36-1979	15X16	F	1 20
36-1980	18	F	1 10
36-1981	21X20	F	1 7

ADAPTER HxS



PART NO.	SIZE	BOX	PALLET
36-1999	4	F	1 75
36-2000	6	F	1 50
36-2001	8	F	1 27
36-2002	10	F	1 14
36-2003	12	F	1 10
36-2004	15	F	1 3
36-2005	18	F	1 3
36-2006	21	F	1 2
36-2007	24	F	1 1
36-2008	27	F	1 1
36-2009	30	F	1 1
36-2010	36	F	1 -

ADAPTER SxIPS HxH



PART NO.	SIZE	BOX	PALLET
36-659	4X3	M	48 1152

ADAPTER SxIPS HxH

PART NO.	SIZE	BOX	PALLET
36-6574	4	M	19 855
36-661	6X4	M	24 1080
36-662	6	M	12 540
36-1992	8	F	1 75
36-1993	10	F	1 43
36-1994	12	F	1 25
36-1995	15X14	F	1 14
36-1996	15X16	F	1 14
36-1997	18	F	1 7
36-1998	21X20	F	1 5

MALE ADAPTER HxMIPT



PART NO.	SIZE	BOX	PALLET
36-1062	4	M	30 -
36-1063	6	M	3 -

FEMALE ADAPTER HxFIPT



PART NO.	SIZE	BOX	PALLET
36-1982	3	F	24 2304
36-644	4	M	24 768
36-6571	6	M	16 288
36-333	8	M	8 -



FEMALE ADAPTER HxFIPT

PART NO.	SIZE		BOX	PALLET
36-1983	10	F	1	50
36-1984	12	F	2	-
36-1985	15X16	F	1	-
36-1986	18	F	1	-
36-1987	21X20	F	1	-
36-1988	24	F	1	-

ADAPTER CORR SPGxSWR H



PART NO.	SIZE		BOX	PALLET
36-805	4	M	24	-

ADAPTER SLEEVE DWV SPGxSWR H



PART NO.	SIZE		BOX	PALLET
36-2059	3	M	25	2400
36-566	4	M	25	1800
36-567	6	M	10	400
36-612	12	F	1	-

FEMALE ADAPTER HxFPT W/PLUG



PART NO.	SIZE		BOX	PALLET
36-404	4	M	24	576
36-406	6	M	16	192

STOP COUPLING HxH



PART NO.	SIZE		BOX	PALLET
36-6591	3	M	50	2000
36-665	4	M	21	945
36-6567	6	M	12	216
36-667	8	M	6	72
36-1771	10	F	1	41
36-1772	12	F	1	25
36-1773	15	F	1	14
36-1774	18	F	1	9
36-1775	21	F	1	5
36-1776	24	F	1	4
36-1777	27	F	1	2
36-1778	30	F	1	1
36-1779	36	F	1	1

REPAIR COUPLING



PART NO.	SIZE		BOX	PALLET
36-2073	4	M	30	1200

CAP



PART NO.	SIZE		BOX	PALLET
36-2011	3	M	30	2880
36-6568	4	M	24	1512
36-6565	6	M	24	432
36-688	8	M	6	144
36-2012	10	F	1	73
36-2013	12	F	1	41
36-2014	15	F	1	40
36-2015	18	F	1	23
36-2016	21	F	1	14
36-2017	24	F	1	10
36-2018	27	F	1	8
36-2019	30	F	1	3
36-2020	36	F	1	2

CLEANOUT THREADED RAISED PLUG



PART NO.	SIZE	BOX	PALLET
36-2021	3	M	50 4800
36-6572	4	M	40 1440
36-6573	6	M	35 1120
36-697	8	M	8 -
36-2022	10	M	2 -
36-2023	12	M	1 -

PERMANENT PLUG



PART NO.	SIZE	BOX	PALLET
36-2032	15	F	1 13
36-2033	18	F	1 6
36-2034	21	F	1 3
36-2035	24	F	1 2
36-2036	27	F	1 2
36-2037	30	F	1 1
36-2038	36	F	1 1

*sized 4-12 are located in SDR 35 Gasketed Section

DRAIN GRATE SPIGOT



PART NO.	SIZE	BOX	PALLET
36-2070	3	M	50 4800
36-6593	4	M	40 2880
36-806	6	M	30 1350

FLUSH DOWNSPOUT ADAPTER X H



PART NO.	SIZE	BOX	PALLET
36-647	2X3X3	M	36 -
36-6588	2X3X4	M	25 1800
36-6585	3X4X4	M	25 1000
36-650	4X6X6	M	15 675

DOWNSPOUT ADAPTER X H



PART NO.	SIZE	BOX	PALLET
36-651	2X3X3	M	50 2000
36-652	2X3X4	M	50 2000
36-653	3X4X3	M	65 -
36-654	3X4X4	M	25 1000

CLEANOUT THREADED RECESSED PLUG



PART NO.	SIZE	BOX	PALLET
36-698	4	M	54 3402
36-699	6	M	36 1620
36-2024	8	M	4 -
36-2025	10	F	1 -
36-2026	12	F	1 -



CPVC CTS FITTINGS

Application in building and industrial facilities of hot and cold water. The line can also be used to conduct other liquids.

All sizes from ½" to 2".

Due to its low thermal conductivity, CPVC Line pipes and connections do not demand thermal insulation application when built-in, or in visible stretches.

There is no need of special equipment and qualified labor. The connections are welded cold (with appropriate adhesive).

The CPVC CTS line does not undergo chemical attack from water substances. This avoids oxidation, rust or corrosion of components, and incrustations that impair the design flow during service life.

CPVC CTS Fittings

- CPVC CTS fittings are manufactured using Chlorinated Polyvinyl Chloride, and meet the requirements of Class 23447 as referenced in ASTM D-1784.
- CPVC CTS fittings conform to the Standard Specification For Solvent Cements For Chlorinated Poly(Vinyl Chloride) (CPVC) Plastic Pipe And Fittings.

INFORMATION FOR USE:

*Do not use CPVC
to conduct steam.*

*Working maximum
temperature is 176°F.*

*Modification of
fittings void the
warranty.*

*Specs subject to
change without
notice.*



TEE (SLIP X SLIP X SLIP)



PART NO.	SIZE	BOX
4101-005	1/2	500
4101-007	3/4	250
4101-010	1	100
4101-012	1-1/4	100
4101-015	1-1/2	100
4101-020	2	50

REDUCING TEE (SLIP X SLIP X SLIP)



PART NO.	SIZE	BOX
4101-094	3/4 x 1/2 x 1/2	100
4101-095	3/4 x 1/2 x 3/4	100
4101-101	3/4 x 3/4 x 1/2	100
4101-120	1 x 1/2 x 1/2	100
4101-125	1 x 3/4 x 3/4	100
4101-147	1-1/4 x 3/4 x 3/4	100
4101-184	1-1/2 x 3/4 x 3/4	100
4101-203	1-1/2 x 1-1/4 x 1-1/4	100
4101-223	2 x 3/4 x 3/4	50

ELBOW 90° (SLIP X SLIP)



PART NO.	SIZE	BOX
4106-005	1/2	500
4106-007	3/4	250
4106-010	1	100
4106-012	1-1/4	100
4106-015	1-1/2	100
4106-020	2	50

ELBOW 90° STREET (SLIP X SPIGOT)



PART NO.	SIZE	BOX
4109-005	1/2	500
4109-007	3/4	250
4109-010	1	100

ELBOW 45° (SLIP X SLIP)



PART NO.	SIZE	BOX
4117-005	1/2	500
4117-007	3/4	250
4117-010	1	100
4117-012	1-1/4	100
4117-015	1-1/2	100
4117-020	2	50

ELBOW 45° STREET (SLIP X SPIGOT)



PART NO.	SIZE	BOX
4127-005	1/2	500
4127-007	3/4	250
4127-010	1	100

COUPLING (SLIP)



PART NO.	SIZE	BOX
4129-005	1/2	500
4129-007	3/4	250
4129-010	1	100
4129-012	1-1/4	100
4129-015	1-1/2	100
4129-020	2	50

REDUCING COUPLING (SLIP X SLIP)



PART NO.	SIZE	BOX
4129-101	1 X 3/4	750
4129-131	1 X 3/4	350

FEMALE ADAPTER (SLIP X FIPT)



PART NO.	SIZE	BOX
4135-005	1/2	500
4135-007	3/4	250
4135-010	1	100

**FEMALE ADAPTER
(SLIP X BRASS FIPT)**



PART NO.	SIZE	BOX
4135-005BR	1/2	500
4135-007BR	3/4	250
4135-010BR	1	100
4135-012BR	1-1/4	100
4135-015BR	1-1/2	100
4135-020BR	2	50

MALE ADAPTER (MIPT X SLIP)



PART NO.	SIZE	BOX
4136-005	1/2	500
4136-007	3/4	250
4136-010	1	100

**MALE BRASS ADAPTER
(MIPT X SLIP)**



PART NO.	SIZE	BOX
4136-005BR	1/2	500
4136-007BR	3/4	250
4136-010BR	1	100
4136-012BR	1-1/4	100
4136-015BR	1-1/2	100
4136-020BR	2	50
4136-101BR	3/4 x 1/2	250

**REDUCING BUSHING
(SLIP X SLIP)**



PART NO.	SIZE	BOX
4137-101	3/4 x 1/2	250
4137-130	1 x 1/2	100
4137-131	1 x 3/4	100
4137-166	1-1/4 x 1/2	100
4137-167	1-1/4 x 3/4	100
4137-168	1-1/4 x 1	100
4137-210	1-1/2 x 3/4	100
4137-211	1-1/2 x 1	100
4137-212	1-1/2 x 1-1/4	100
4137-249	2 x 1	50
4137-250	2 x 1-1/4	50
4137-251	2 x 1/2	50

CAP (SLIP)



PART NO.	SIZE	BOX
4147-005	1/2	500
4147-007	3/4	250
4147-010	1	100
4147-012	1-1/4	100
4147-015	1-1/2	100
4147-020	2	50

UNION (SLIP X SLIP)



PART NO.	SIZE	BOX
4197-005	1/2	500
4197-007	3/4	250
4197-010	1	100
4197-012	1-1/4	100
4197-015	1-1/2	100
4197-020	2	50

**TRANSITION UNION
(SLIP X BRASS FIPT)**



PART NO.	SIZE	BOX
4199-007BR	3/4	50

TUBE STRAPS



PART NO.	SIZE	BOX
4724-005-25	1/2	25
4724-007-25	3/4	25

**DROP EAR ELBOW 90°
(Slip x Brass FIPT)**



PART NO.	SIZE	BOX
DE4107-005BR	1/2	100

**TRANSITION ELBOW
(SLIP X BRASS FIPT)**



PART NO.	SIZE	BOX
T4106-005	1/2	100
T4106-007	3/4	100
T4106-010	1	100
T4106-101	3/4 x 1/2	100



VALVES



VALVES

Tigre's Valves are 100% watertight due to the efficient sealing system.

All sizes from 1/2" to 2" (PVC); 1/2" and 3/4" (CPVC).

They are easy to install, lightweight, doesn't have nuts and feature cold welded joints.

With new more resistant wheels, a greater lifespan is granted, and a light 1/4 turn is enough to operate.

VALVES

- PVC and CPVC Valves meet or exceed all performance specifications of ASTM D-2466 and D-2846, respectively.
- Tigre Valves conform to the Standard Specification For Special Engineering Fittings, ASTM F-1970.
- Tigre Valves attend the requirements of the NSF 14 and NSF 61.
- PVC Valves White Body, Red Handle.
- CPVC Valves Ivory Body (CPVC), Blue Handle.

INFORMATION FOR USE:

Do not use CPVC Valves to conduct steam.

Working maximum temperature is 140°F.

Service pressure: 150 PSI (10 bar) at 73°F (23°C)

Modification of valves will void the warranty.

Specs subject to change without notice.



CPVC BALL VALVE (SLIP X SLIP)

PART NO.	SIZE	BOX
CTS-005	1/2	162
CTS-007	3/4	80

PVC BALL VALVE (FIPT X FIPT)

PART NO.	SIZE	BOX
T1-005W	1/2	162
T1-007W	3/4	80
T1-010W	1	84
T1-012W	1-1/4	50
T1-015W	1-1/2	50
T1-020W	2	24

PVC BALL VALVE (SLIP X SLIP)

PART NO.	SIZE	BOX
S1-005W	1/2	162
S1-007W	3/4	80
S1-010W	1	84
S1-012W	1-1/4	50
S1-015W	1-1/2	50
S1-020W	2	24

CEMENTS



CEMENTS

Our cements have an easy application, with no need for special tools. The included applicator is enough to keep your fittings tight-sealed.

Cold welding procedure provides chemical reaction that bonds surfaces under contact, making them a solid material.

We offer many options of packages, from ¼ pint to 1qt. capacity, to suit all your welding necessities.

Tigre's Cements meet or exceed the specifications of ASTM F-493, D-2564, D-2235. See the table below for more information:

PRODUCT	COLOR	DENSITY	Max VOC (SCAQMD 1168/316A)	Flash point
Cleaner	Clear	6.7 lb/gal	550 G/L	15° F (closed cup)
Primer	Purple	7.1 lb/gal	550 G/L	6° F (closed cup)
Multi-Purpose Med. Body	Clear	7.8 lb/gal	490 G/L	-4° F (closed cup)
PVC Cement Med. Body	Clear	7.6 lb/gal	510 G/L	-4° F (closed cup)
CPVC Cement Reg. Body	Orange	7.8 lb/gal	490 G/L	-4° F (closed cup)

INFORMATION FOR USE:

Do not store the Cements near heat, sparks or flame.

Use only in well ventilated area.

Keep container closed when not in use.

Get medical attention if irritation persists.

Keep out of reach of children.

PVC CEMENT



PART NO.	SIZE	BOX
1104MB-4	1/4 Pint (4 fl. oz.) 118mL	24
1104MB-2	1/2 Pint (8 fl. oz.) 237mL	24
1104MB-Q	1 Quart (32 fl. oz.) 946mL	12
1104MB-P	1 Pint (16 fl. oz.) 473mL	12

CPVC CEMENT



PART NO.	SIZE	BOX
1106-4	1/4 Pint (4 fl. oz.) 118mL	24
1106-2	1/2 Pint (8 fl. oz.) 237mL	24

MULTI-PURPOSE CEMENT



PART NO.	SIZE	BOX
1108-4	1/4 Pint (4 fl. oz.) 118mL	24
1108-2	1/2 Pint (8 fl. oz.) 237mL	24
1108-Q	1 Quart (32 fl. oz.) 946mL	12
1108-P	1 Pint (16 fl. oz.) 473mL	12

CLEANER



PART NO.	SIZE	BOX
901-4	1/4 Pint (4 fl. oz.) 118mL	24
901-Q	1 Quart (32 fl. oz.) 946mL	12

PRIMER







PART NO.	SIZE	BOX
911-QP	1 Quart (32 fl. oz.) 946mL	12
911-4P	1/4 Pint (4 fl. oz.) 118mL	24





KEY

-  TIGRE
-  TIGRE ADS
-  TAE
-  TIGRE METALS
-  CLARIS
-  TIGRE TOOLS AND PAINTINGS
-  TIGRE EXPORT

Please visit www.tigreusa.com to find the most current information on our terms and conditions of sale, privacy policy and warranty information.

TIGRE USA

● Shenzhen (China)

ABOUT THE TIGRE GROUP INTERNATIONALLY

**Always committed to delivering
the highest quality products**

Tigre is among the most internationalized companies in Brazil, according to a study carried out in 2014 by the Dom Cabral Foundation (Fundação Dom Cabral).

TIGRE is a large Brazilian multinational presence in more than 40 countries, with 8,000 employees and 22 factories, 9 in Brazil and 13 abroad.

In addition to Tigre – Pipes and Fittings, the Tools, Claris - PVC Doors and Windows, and TIGRE - HDPE Corrugated Pipes.

International expansion, and the creation of new businesses and new products are the ways TIGRE has found to maintain its constant growth.

**With 23 manufacturing units
and a global presence**

All of this is done by





TIGRE USA INC.
2315 Beloit Avenue • Janesville, WI 53546

tigreusa.com

608.754.4554 • 877.751.5371 • fax 608.554.4625
customerservice@tigre.com