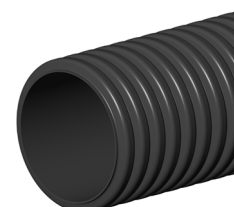


## DATA SHEET

### SOLFLO MAX

**PRODUCT DESCRIPTION :** Rigid dual wall pipe, with smooth interior and corrugated exterior walls for roadway use.

**FUNCTION :** Non-perforated pipe: Gravity flow of water in networks and water course piping.  
Perforated pipe: Used to collect surface runoff and control the ground water level.



**MANUFACTURING STANDARDS :** BNQ 3624-120, CSA B182.8, ASTM 2648, ASTM 2306 or AASHTO M294

**RAW MATERIAL :** Made from HDPE resin that complies with properties classification of ASTM D3350 standard.

**TECHNICAL DATA :** Structural strength: CAN/CSA S6 (CL-625), AASHTO (HS20 and HS25) and AREMA Cooper (E-80)  
Filter: Needle punched nonwoven geotextile Rutex IV with 110-micron openings

### TECHNICAL DATA

Diameter						Manning	Category <sup>1</sup>		Minimum backfill				Maximum backfill							
Nominal		Interior		Outside			Class A	Class B	Weight		CL-625		E-80		CL-625		E-80			
mm	in	mm	in	mm	in				n	kg/m	lb/ft	m	ft	m	ft	m	ft	m	ft	
100	4	101	4,0	120	4,7	0,010	R320		1,0	0,7	0,3	1,0	0,6	2,0	20,0	65,6		8,5	27,9	
150	6	150	5,9	176	6,9	0,010	R320		1,6	1,1	0,3	1,0	0,6	2,0	19,0	62,3		8,5	27,9	
200	8	205	8,1	236	9,3	0,010	R320		2,8	1,9	0,3	1,0	0,6	2,0	18,0	59,1		7,9	25,9	
250	10	251	9,9	297	11,7	0,010	R320		4,5	3,0	0,3	1,0	0,6	2,0	18,0	59,1		7,9	25,9	
300	12	303	11,9	363	14,3	0,010	R320	R210	6,0	4,0	0,3	1,0	0,6	2,0	17,0	55,8	16,0	52,5	8,5	27,9
375	15	381	15,0	449	17,7	0,010	R320	R210	8,0	5,3	0,3	1,0	0,6	2,0	17,0	55,8	17,0	55,8	8,8	28,9
450	18	457	18,0	544	21,4	0,010	R320	R210	13,0	8,7	0,3	1,0	0,6	2,0	17,0	55,8	17,0	55,8	7,9	25,9
525	21	535	21,1	640	25,2	0,012	R320	R210	18,0	12,1	0,3	1,0	0,6	2,0	16,0	52,5	16,0	52,5	7,6	24,9
600	24	603	23,7	741	29,2	0,012	R320	R210	20,0	13,4	0,3	1,0	0,6	2,0	15,0	49,2	15,0	49,2	7,3	24,0
750	30	756	29,8	890	35,0	0,012	R320	R210	36,0	24,2	0,3	1,0	0,6	2,0	15,0	49,2	13,0	42,7	6,1	20,0
900	36	900	35,4	1041	41,0	0,012	R320	R210	55,0	37,0	0,3	1,0	0,9	3,0	15,0	49,2	13,0	42,7	6,7	22,0
1050	42	1067	42,0	1224	48,2	0,012	R140		45,0	30,2	0,3	1,0	1,2	3,9	13,0	42,7			6,7	22,0
1200	48	1220	48,0	1377	54,2	0,012	R125		60,0	40,3	0,3	1,0	1,2	3,9	13,0	42,7			5,8	19,0
1500	60	1514	59,6	1701	67,0	0,012	R95 <sup>2</sup>		68,0	45,7	0,5	1,6	1,2	3,9	11,0	36,1			6,4	21,0

Note 1: For reference, a Class A category pipe will have a minimum compression stiffness of 320 kPa at 5% deformation.

Note 2: R95 refers to the categorization of BNQ 3624-120 and CSA B182.8 standards.

Note 3: Values in the table are approximate and may change without notice.

Note 4: 100 mm (4 in) to 1500 mm (60 in) pipes are certified BNQ 3624-120 and CSA B182.8 standards. AASHTO M294 certified pipes are available upon request. Please contact your Soleno representative for more information.

## DATA SHEET

### SOLFLO MAX (CONT'D)

#### LENGTHS TABLE - CLASS A according to available couplers

Nominal Diameter		No coupler		Soil tight couplers						Watertight couplers					
		Plain		BC		DBS		SC		BIGC <sup>1</sup>		BG		DBIG <sup>1</sup>	
mm	in	m	ft	m	ft	m	ft	m	ft	m	ft	m	ft	m	ft
100	4	6	19,7			6	19,7	6	19,7					4/6	13,1/19,7
150	6	6	19,7			6	19,7	6	19,7					4/6	13,1/19,7
200	8	6	19,7			6	19,7	6	19,7					4/6	13,1/19,7
250	10	6	19,7			6	19,7	6	19,7					4/6	13,1/19,7
300	12	6/9	19,7/29,5	6	19,7			6/9	19,7/29,5	4/6	13,1/19,7				
375	15	6/9	19,7/29,5	6	19,7			6/9	19,7/29,5	4/6	13,1/19,7				
450	18	6/9	19,7/29,5	6	19,7			6/9	19,7/29,5	4/6	13,1/19,7				
525	21	6/9	19,7/29,5	6	19,7			6/9	19,7/29,5	4/6	13,1/19,7				
600	24	6/9	19,7/29,5	6	19,7			6/9	19,7/29,5	4/6	13,1/19,7				
750	30	6/9	19,7/29,5	6	19,7			6/9	19,7/29,5	4/6	13,1/19,7				
900	36	6/9	19,7/29,5	6	19,7			6/9	19,7/29,5	4/6	13,1/19,7				
1 050	42							coupler available <sup>2</sup>				3,3	10,8		
1 200	48	6/9	19,7/29,5	6	19,7			6/9	19,7/29,5	4/6	13,1/19,7				
1 500	60											6	19,7		

Note 1: BIGC and DBIG connectors are available for non-perforated pipe only.

Note 2: The split coupler is available, although the 1050 mm (42 in) pipe is only available with BG type coupler.

Note 3: Values in the table are approximate and may change without notice.

Note 4: Lengths in the table have a tolerance between -1 % to 3 %.

#### LENGTHS TABLE - CLASS B according to available couplers

Nominal Diameter		No coupler		Soil tight couplers			
		Plain		BC		SC	
mm	in	m	ft	m	ft	m	ft
300	12	6/9	19,7/29,5	6	19,7	6/9	19,7/29,5
375	15	6/9	19,7/29,5	6	19,7	6/9	19,7/29,5
450	18	6/9	19,7/29,5	6	19,7	6/9	19,7/29,5
525	21	6/9	19,7/29,5	6	19,7	6/9	19,7/29,5
600	24	6/9	19,7/29,5	6	19,7	6/9	19,7/29,5
750	30	6/9	19,7/29,5	6	19,7	6/9	19,7/29,5
900	36	6/9	19,7/29,5	6	19,7	6/9	19,7/29,5

Note 1: Values in the table are approximate and may change without notice.

Note 2: Lengths in the table have a tolerance between -1 % to 3 %.

#### LEGEND

**Plain** : plain end  
**BC** : bell with clips  
**DBS** : double bell snap  
**SC** : split couplers  
**BIGC** : bell with integrated gasket  
**BG** : o-ring bell gasket  
**DBIG** : double bell with integrated gasket

**APPLICATIONS** : Driveway culvert, culvert, stormwater sewer, beaver barrier, ventilation, ditch piping, roadway drainage, drainage collector and outlet, detention or retention system and trench drain.

**OPTIONS** : Special lengths are available (upon request)  
 Beveled cut  
 Welded coupler for service entrance or connecting to cath basin  
 Fish weir

**INSTALLATION** : Visit [solen.com](http://solen.com) to consult the installation guide.